

## Arundel Street, London WC2R

Price £1,695 per week - Furnished







## Description

A stunning 2 bedroom penthouse in the luxurious 190 Strand.

This beautifully presented duplex apartment is arranged over two floors and boasts stunning views of the river Thames, Houses of Parliament and the London Eye. The lower level comprises 2 double bedrooms with large fitted wardrobes and luxury marble finished en-suite to master, capacious reception area with contemporary fully fitted kitchen, two luxury bathrooms, and a large balcony with Westerly aspect. The upper level is compromised with a large private terrace boasting panoramic views.

Benefits include on site gym, pool, cinema, business facilities & 24 hour concierge. The development is situated on the Strand, Westminster WC2, 0.2 miles from Temple station and 0.5 miles from Covent Garden.

We understand that cooling / heating is delivered via a communal system for which separate charges apply.

Council tax band: H. Rent is payable on a monthly basis, and you may be required to pay more than a month's rent in advance for tenancies with annual rents exceeding £100,000. You will be required to pay a 1 week holding deposit following a successful offer. Tenancies with annual rents up to £50,000 will require a 5 weeks' security deposit, while those exceeding this threshold will require a 6 weeks' deposit. Utility bills, council tax, telephone line and broadband are not included in the rent. As well as paying the rent, you may also be required to make some additional permitted payments. If your tenancy does not qualify as an APT, additional fees may apply. Please visit [jll.co.uk/fees](http://jll.co.uk/fees) for details of fees that may be payable when renting a property. To check broadband and mobile phone coverage please visit Ofcom here [ofcom.org.uk/phones-telecoms-and-internet/advice-for-consumers/advice/ofcom-checker](http://ofcom.org.uk/phones-telecoms-and-internet/advice-for-consumers/advice/ofcom-checker)

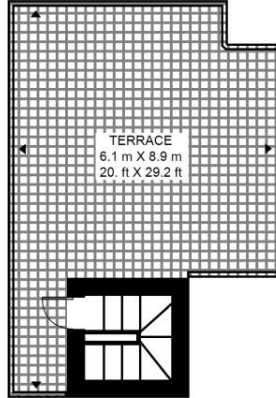
- 2 Bedroom penthouse
- 2 Bathrooms
- Large private terrace boasting panoramic views
- Large balcony with Westerly aspect
- 24 Hour concierge
- 0.2 miles from Temple station
- Approx. 1,261 sq ft (117.2 sq m)
- Furnished
- EPC: B
- Council tax: Band H

# Floorplan

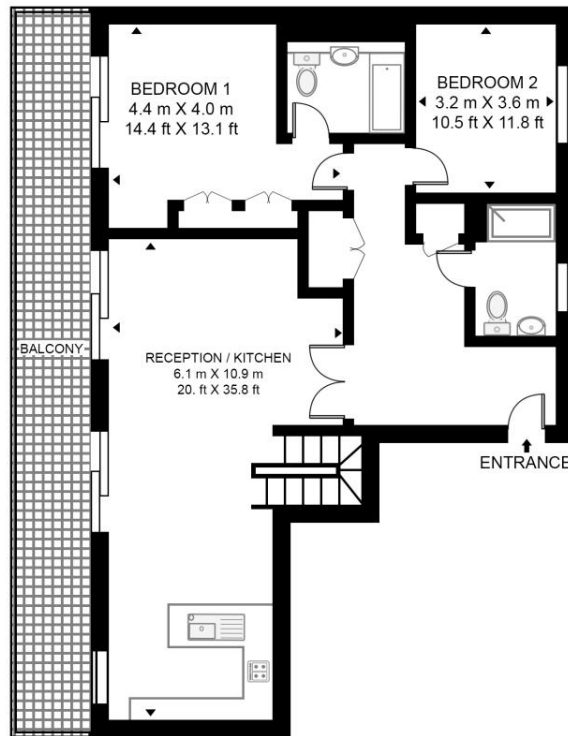
1,261 sq ft | 117 sq m

## TEMPLE HOUSE, 190 THE STRAND

APPROXIMATE GROSS INTERNAL FLOOR AREA 1261 SQ.FT (117.2 SQ.M)



UPPER FLOOR



LOWER FLOOR



This floor plan has been defined by the RICS Code of Measurement. This floor plan and all others are for approximate representative purposes only and upon usage is agreed to as such by the client.

WWW: [hdvirtualart.com](http://hdvirtualart.com) | TEL: 0203.974.1567 | EMAIL: [info@hdvirtualart.com](mailto:info@hdvirtualart.com)

City  
25 Walbrook The Walbrook  
Building,  
London EC4N 8AF  
+4420 7337 4000

*Urban living, your way.*

[jll.co.uk/residential](http://jll.co.uk/residential)

© 2019 Jones Lang LaSalle IP, Inc. All rights reserved. All information contained herein is from sources deemed reliable; however, no representation or warranty is made to the accuracy thereof.

