



Guide Price
£415,000

Freehold

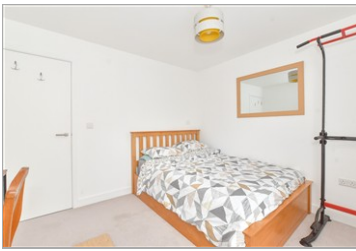
3x  2x  1x 

**William Penn Way,
Chichester, West
Sussex, PO19**

OVER 60?

Secure this property
for up to **59% less!**

cubitt&west
Helping you move forwards



Main features

- Open-plan kitchen, dining, living space
- Plenty of storage
- 3 double bedrooms
- Main bedroom with en suite and fitted wardrobes
- Cloakroom on ground floor

Accommodation

GROUND FLOOR

Entrance Hall
Cloak Room
Kitchen / Diner: 17'9 x 11'8 (5.41m x 3.56m)
Lounge: 14'6 x 10'3 (4.42m x 3.13m)

FIRST FLOOR

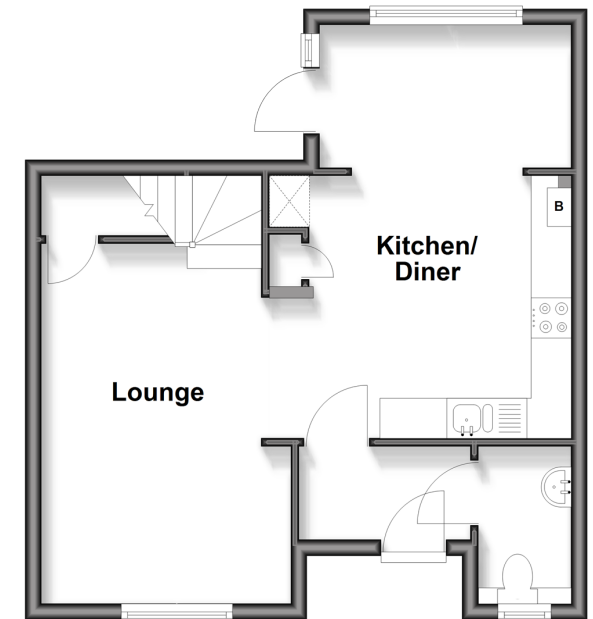
Bedroom 1: 12'1 x 11'3 (3.69m x 3.43m)
En Suite
Bedroom 2: 11'2 x 10'2 (3.41m x 3.10m)
Bedroom 3: 10'3 x 8'2 (3.13m x 2.49m)
Bathroom

OUTSIDE

Rear Garden
Off-Road Parking

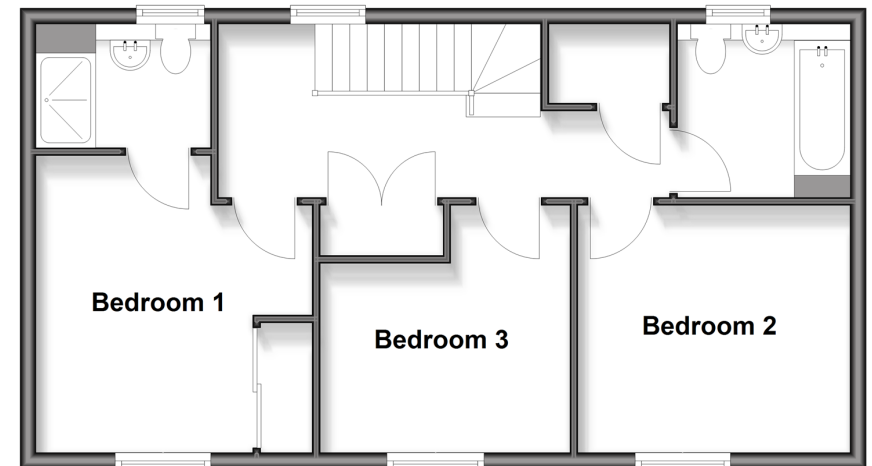
Ground Floor

Approx. 39.4 sq. metres (423.7 sq. feet)



First Floor

Approx. 54.3 sq. metres (584.4 sq. feet)



Call Chichester - 01243 786581 ■ cubittandwest.co.uk

- Legal advice should be taken to verify fixtures/fittings, planning, alterations and/or lease details
- Appliances & services are untested, dimensions are approximate and floor plans are not to scale
- Through a Homewise Home For Life Plan people aged 60+ can secure this property for up to 50% less, by purchasing a Lifetime Lease.



40415558/20251113/CNW/CNW