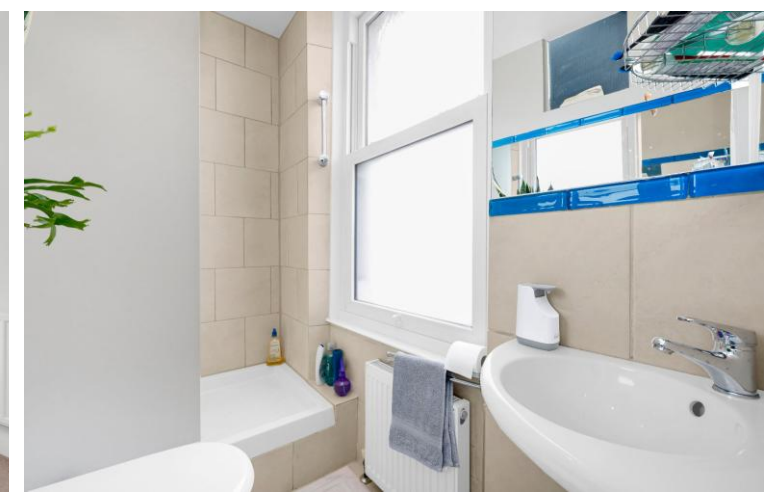




Allfarthing Lane  
London, SW18

CHESTERTONS





Nestled in a sought-after location just 0.3 miles from the picturesque Wandsworth Common, this first floor two bedroom period conversion offers over 520 sq. ft. of well-proportioned living space.

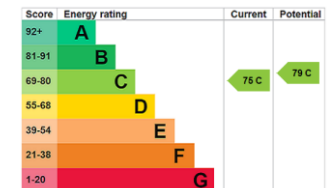
The spacious living room offers the perfect setting for relaxation and entertaining, while the fully equipped kitchen is ideal for home cooking. The two bedrooms provide plenty of space for both relaxation and study.

This property is ideally located for those seeking a balance of period charm and convenience. Wandsworth Common is just moments away, perfect for enjoying green spaces and outdoor activities. Wandsworth Town Station is also within easy reach, located just 0.7 miles from the property, offering quick and easy access into Central London.

Old York Road is located 0.3 miles from the property where you can find an abundance of restaurants, bars & coffee shops. The property is also just moments from the popular Southside Shopping Centre in Wandsworth, offering an extensive selection of shops, restaurants, cafés, and leisure facilities, including a cinema and gym.

- Period
- Share of Freehold
- Wandsworth Common 0.3 miles
- Southside Shopping Centre 0.5 miles
- Old York Road 0.6 miles
- Wandsworth Town station 0.7 miles

Offers in Excess of  
£400,000

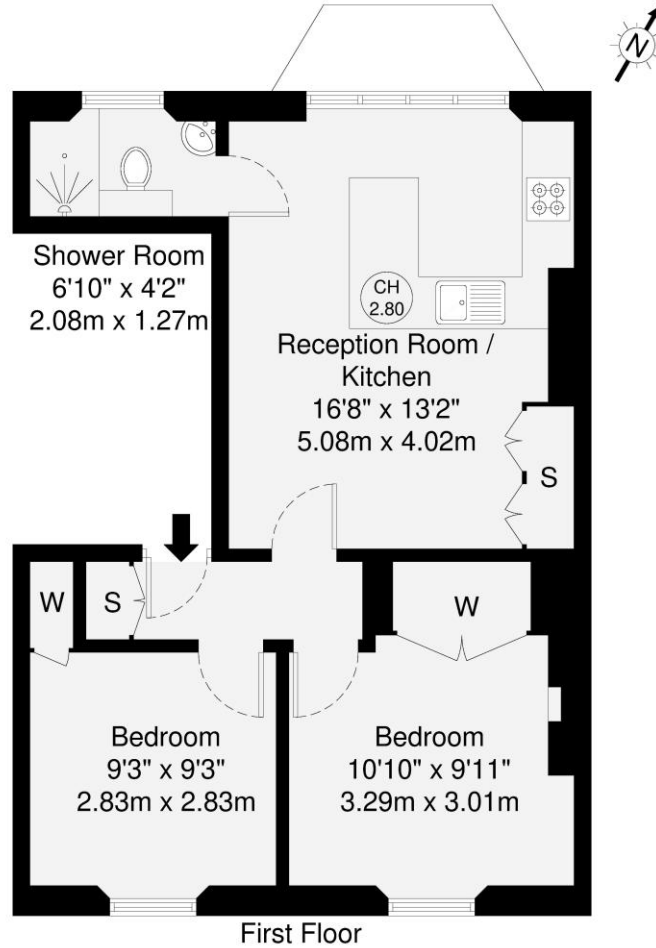


**Tenure:** Share of Freehold 988 years remaining  
**Service Charge:** £480 per annum  
**Ground Rent:** £90 per annum  
**Local Authority:** London Borough of Wandsworth  
**Council Tax Band:** C

*Chestertons Wandsworth Sales*

47 East Hill  
 London  
 SW18 2QE

wandsworth@chestertons.co.uk  
 0208 104 7530  
 chestertons.co.uk



|   |   |  |   |
|---|---|--|---|
| GROSS INTERNAL AREA (GIA)<br>The footprint of the property<br>48.5 sq m / 522 sq ft | TOTAL STORAGE SPACE<br>Storage and wardrobe total area<br>3.2 sq m / 34 sq ft | EXTERNAL FEATURES<br>Garden, Balcony, Terrace, Verandah etc.<br>0.0 sq m / 0.0 sq ft | RESTRICTED HEAD HEIGHT<br>Limited use area under 1.5m<br>0.0 sq m / 0.0 sq ft |
|---|---|--|---|

Disclaimer: Floorplan measurements are approximate and are for illustrative purposes only. While we do not doubt the floorplan accuracy and completeness, you or your advisors should conduct a careful, independent investigation of the property in respect of monetary valuation.

Maison  
VUE

