



Rathbone Place, W1T

£925,000

A one bedroom second floor apartment with a balcony in Rathbone Place, where residents amenities include a pool, gym and screening room. Secure parking available.

The Eurostar at St. Pancras is only 10 minutes from Rathbone Square by Tube. The Elizabeth Line at Tottenham Court Road is a minutes walk away with direct routes to Heathrow and Canary Wharf.

Features

- One Bedroom
- Comfort Cooling
- Balcony
- Residents Amenities
- Concierge 24 Hour
- Residents Gardens



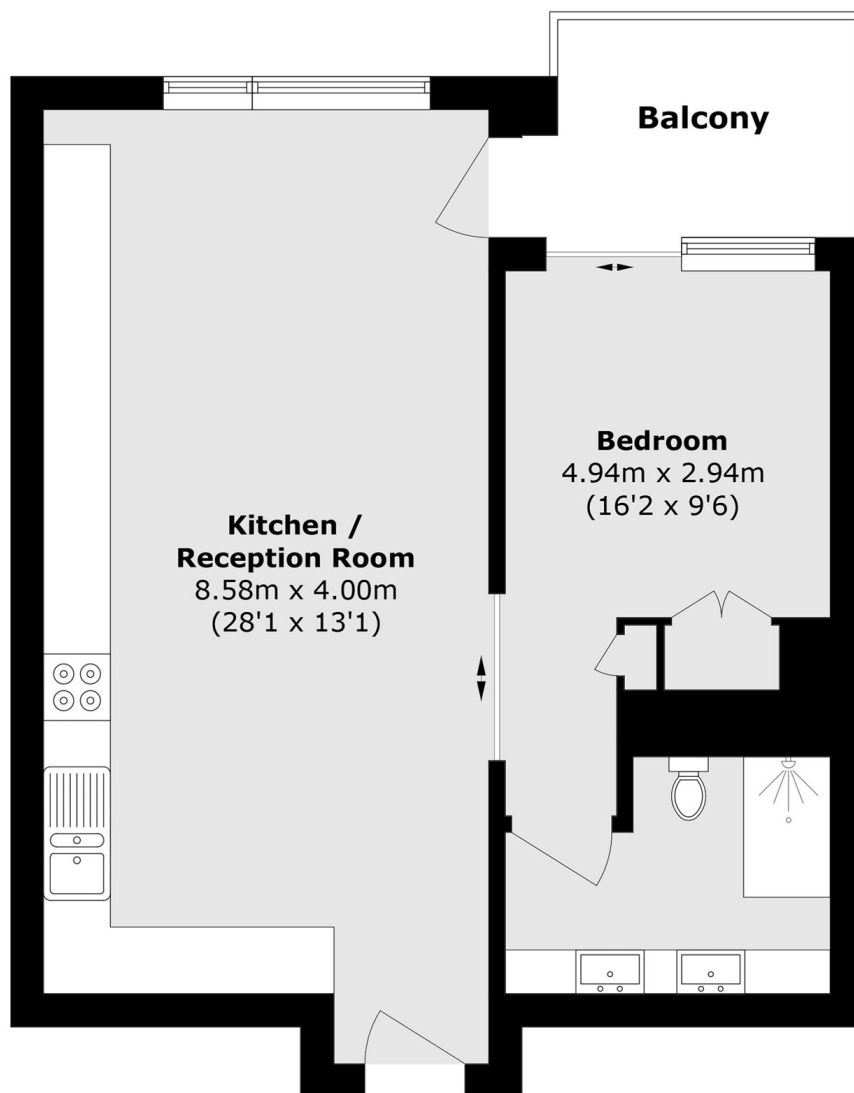
Rathbone Place, WIT

The apartment features brushed stainless steel ironmongery, aluminium powder-coated triple glazed windows to facade, engineered timber flooring to living area, kitchen and hallway. Ambient integrated lighting with recessed LED downlights. Bespoke wardrobes with door-activated lighting. Timber veneer finish walk-in wardrobes. Custom-designed fully integrated fitted kitchen with feature timber panelling and Corian worktops, Integrated Miele appliances.

Residents of this luxury complex benefit from 24 hour concierge, Residents Lounge opening to private residents' garden. Amenities include wine storage and tasting room, screening room, gymnasium, 18-metre pool, sauna and steam room with changing facilities.



Rathbone Place, London, W1T



Total area (approx.): 52.6 sq. m (566.2 sq. ft)

Balcony area (approx.): 5.3 sq. m (57.0 sq. ft)