

THE HOME AGENCY

'Passion for property.'



7 Bay Close, Sholing, Southampton, Hampshire, SO19 8TA

£1,300 PCM

- Two Bedrooms
- Double Glazing
- Sought After Location
- Garden

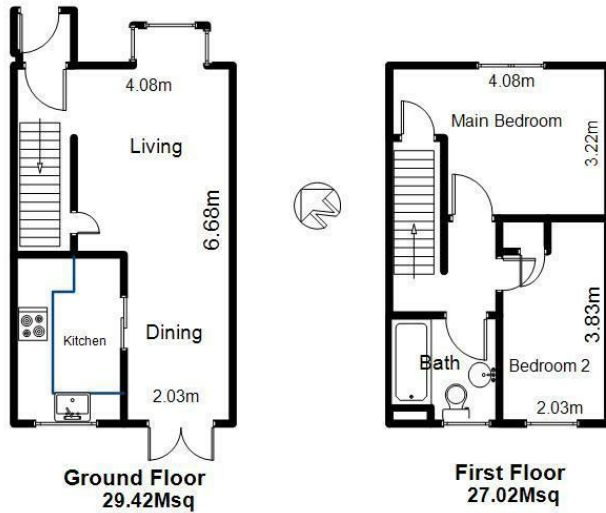
- Modern Kitchen
- Gas Central Heating
- Viewing Recommended

- Modern Bathroom
- Recently Redecorated
- Allocated Parking

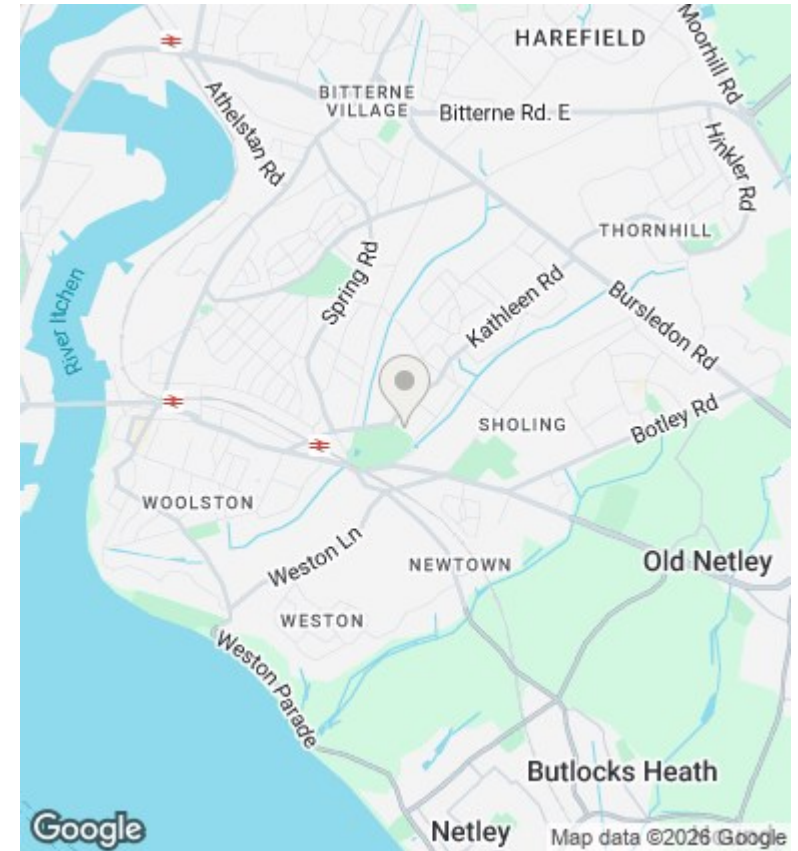
11 London Road, Southampton, Hampshire, SO15 2AE
02380 632632

enquiries@thehomeagency.net
<https://thehomeagency.net>

7 Bay Close SO19 8TA



ALL MEASUREMENTS ARE APPROXIMATE



Directions

Viewings

Viewings by arrangement only. Call 02380 632632 to make an appointment.

Council Tax Band

B

EPC Rating:

D

Energy Efficiency Rating		Current	Potential
<i>Very energy efficient - lower running costs</i>			
(92 plus)	A		90
(81-91)	B		
(69-80)	C		
(55-68)	D	65	
(39-54)	E		
(21-38)	F		
(1-20)	G		
<i>Not energy efficient - higher running costs</i>			
England & Wales		EU Directive 2002/91/EC	