



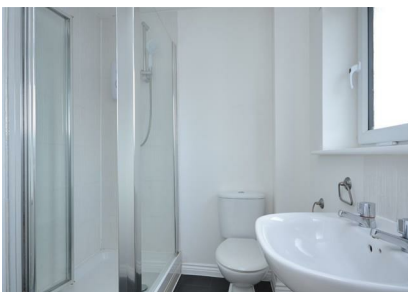
Fleming Way, Haverhill, Suffolk, CB9 7SQ

Rent - £1,350 PCM

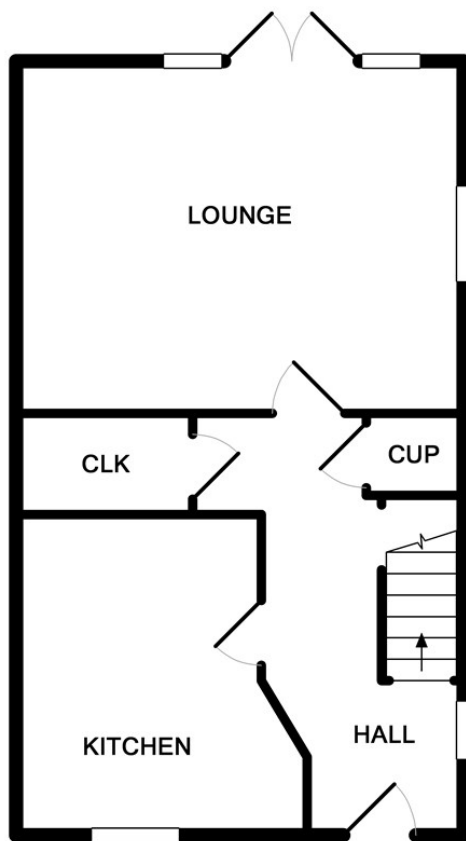
Deposit - £1,557

Shires are delighted to offer to rent this well presented three bedroom end of terrace family home with accommodation comprising entrance hallway, kitchen/diner, lounge and cloakroom to the ground floor. There are three bedrooms to the first floor, en-suite to main bedroom and family bathroom. Externally there is off road parking and enclosed rear garden. Available now.

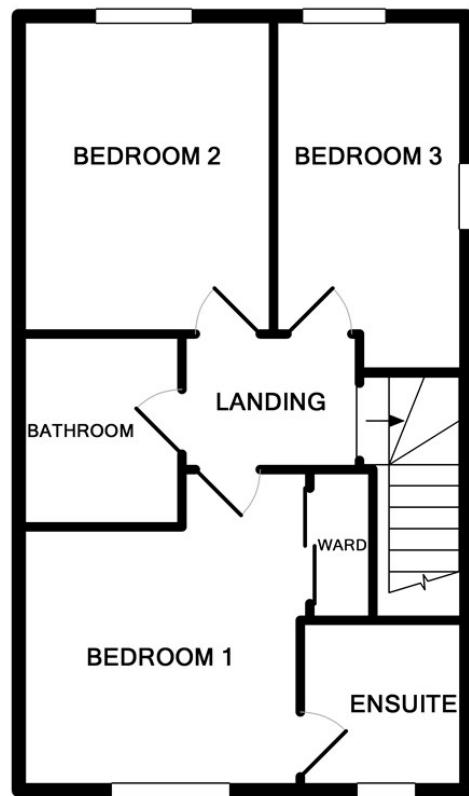
- THREE BEDROOMS
- ARBORETUM DEVELOPMENT
- KITCHEN/BREAKFAST ROOM
- OFF ROAD PARKING
- AVAILABLE START OF NOVEMBER
- END OF TERRACE FAMILY HOME
- LOUNGE/DINER
- EN-SUITE TO MAIN BEDROOM + CLOAKROOM + FAMILY BATHROOM
- ENCLOSED GARDEN TO REAR
- EPC 'B' COUNCIL TAX BAND 'C'



Council Tax Band: C - EPC Rating: A 93



GROUND FLOOR



1ST FLOOR

Whilst every attempt has been made to ensure the accuracy of the floor plan contained here, measurements of doors, windows, rooms and any other items are approximate and no responsibility is taken for any error, omission, or mis-statement. This plan is for illustrative purposes only and should be used as such by any prospective purchaser. The services, systems and appliances shown have not been tested and no guarantee as to their operability or efficiency can be given
Made with Metropix ©2018

