



KILBURN PARK ROAD, NW6

£775,000

A beautifully presented three bedroom, two bathroom apartment, offering approximately 1,033 sq ft of stylish living space.

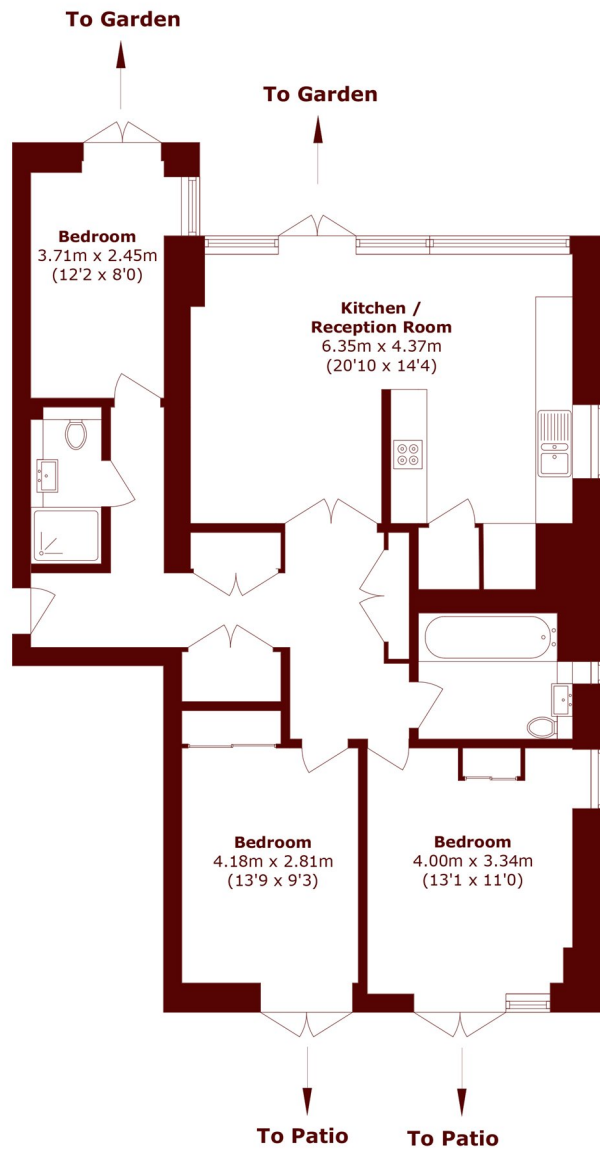
Modern apartment building
Three bedrooms
Two bathrooms

Secure parking
Private garden
Chain free

@marshandparsons
marshandparsons.co.uk

MARSH &
PARSONS

STEP INSIDE KILBURN PARK ROAD



Total area (approx.): 96.0 sq. m (1033.3 sq. ft)

Little Venice
020 7993 3050

Energy Rating: B We aim to make our particulars both accurate and reliable. However, they are not guaranteed; nor do they form part of an offer or contract. If you require clarification on any points then please contact us, especially if you're traveling some distance to view. Please note that appliances and heating systems have not been tested and therefore no warranties can be given as to their good working order

**MARSH &
PARSONS**