

1A Old Haymarket 73-89 Victoria Street, Liverpool, L1 6AF
Tel: 0151 305 2577
Email: liverpoolsales@ascendproperties.com
www.ascendproperties.com

Ascend

Built on higher standards



Dorrington Way, Ellesmere Port

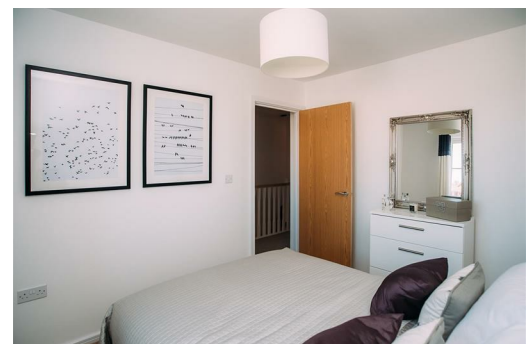
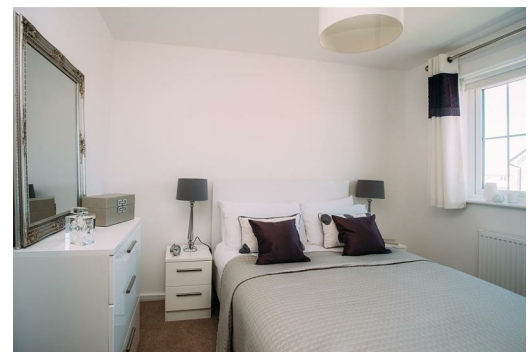
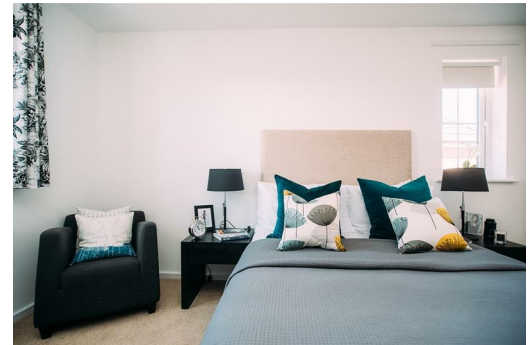
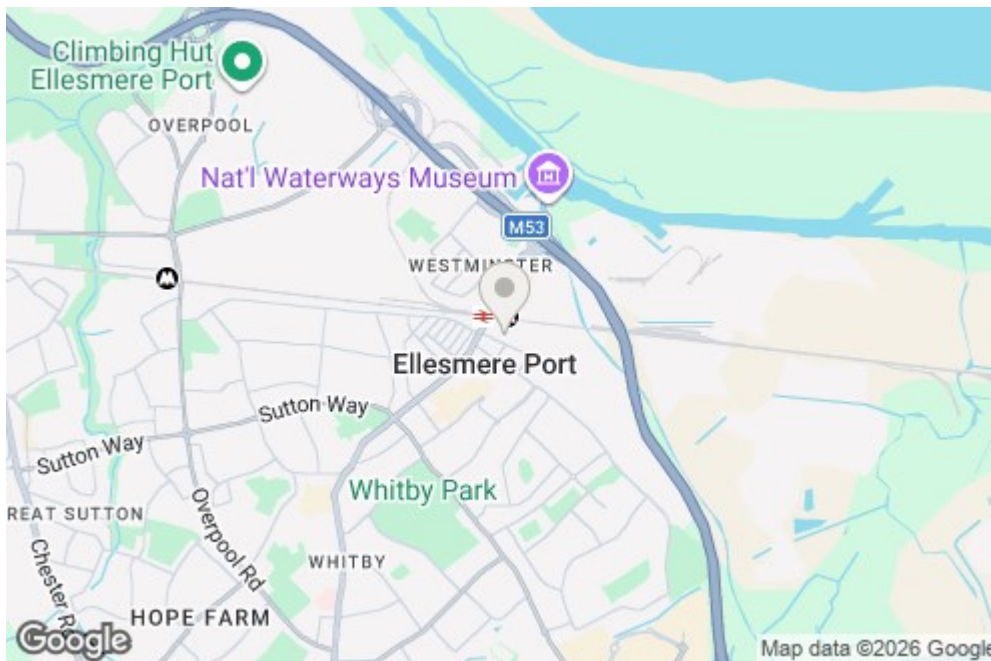
£1,195 Per Month

Spread over two phases, our Cromwell Road development offers a wonderful mix of two to four bedroom houses in an area bursting with potential.

Ellesmere Port is just six miles from Chester town centre, but boasts its own excellent hub for shopping, eating and socialising. With Cheshire Oaks outlet village less than three miles away, all your retail needs are well catered for.

The site is close to local schools, parks and leisure facilities, ideal for you and your family to call home, whilst being close to the M53 gives you instance access to the wider region.





Energy Efficiency Rating		Environmental Impact (CO ₂) Rating	
Current	Potential	Current	Potential
84	96	D	C