

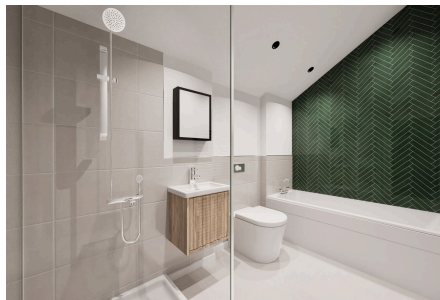


HOMES BY VICTORIA
ESTATE AGENCY

Plot 2 - Castle View, Alcester Road, Studley, B80 7PD

Guide Price £695,000

4 3 2



Step into a world where heritage meets modern living, welcome to Castle View Barns – An exclusive new development on the outskirts of Studley village, offering just eight beautifully converted Victorian brick barns. With characterful exteriors and thoughtfully designed interiors, these homes capture the perfect balance of timeless charm and contemporary elegance.

[homesbyvictoria.co.uk](https://www.homesbyvictoria.co.uk)

victoria@homesbyvictoria | 07833 136521

FOR M HOMES MIDLANDS LIMITED trading as Homes By Victoria Company Number: 13688840 VAT no: 470190115

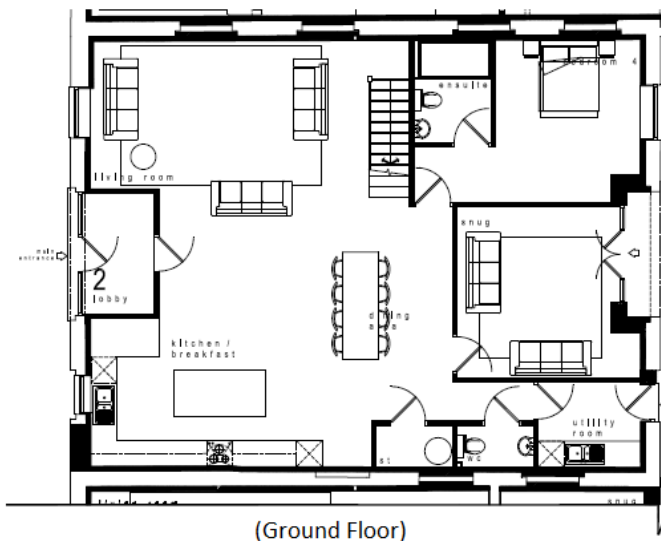


HOMES BY VICTORIA
ESTATE AGENCY

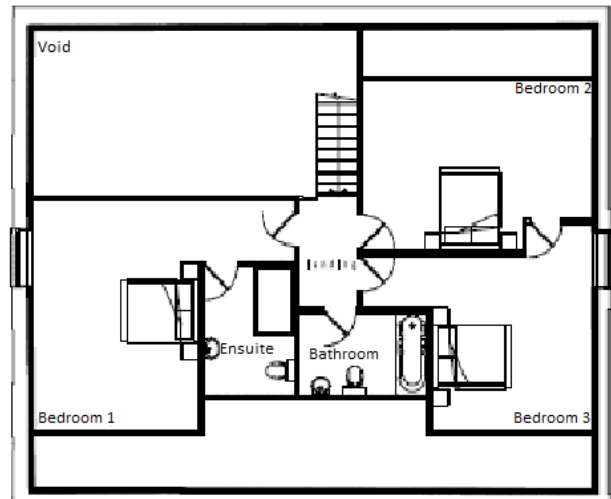


Key Features

- CASTLE VIEW BARNES IN THE HEART OF STUDLEY
- VICTORIAN BRICK AND HIGH SPECIFICATION INTERIOR
- FOUR BEDROOMS
- PRINCIPLE BATHROOM WITH PORCELANOSA TILING
- BLOCK PAVED OFF ROAD PARKING
- LUXURIOUS ELECTRONIC GATED DEVELOPMENT
- OPEN PLAN LIVING
- TWO EN-SUITES
- RADIATING CHARACTER, CHARM AND CONTEMPORARY ELEGANCE
- PRIVATE LANDSCAPED GARDENS



(Ground Floor)



(First Floor)

Plot 2

Living Room / Dining / Kitchen / Breakfast = 8.50m x 10.00m

Bedroom 4 = 5.35m x 3.80m

Ensuite = 1.80m x 2.40m

Snug = 4.30m x 4.05m

WC = 1.80m x 2.45m

Utility = 2.45m x 2.00m

Total GIFA = 231m² / 2,486ft²

Bedroom 1 = 5.05m x 6.1m

Bedroom 2 = 3.75m x 5.35m

Bedroom 3 = 4.40m x 5.35m

Bathroom = 1.85m x 3.00m

Ensuite = 2.85m x 2.10m