



Guide Price
£450,000

Freehold

4x  2x  2x 

**High Street, Wingham,
Canterbury, Kent, CT3**

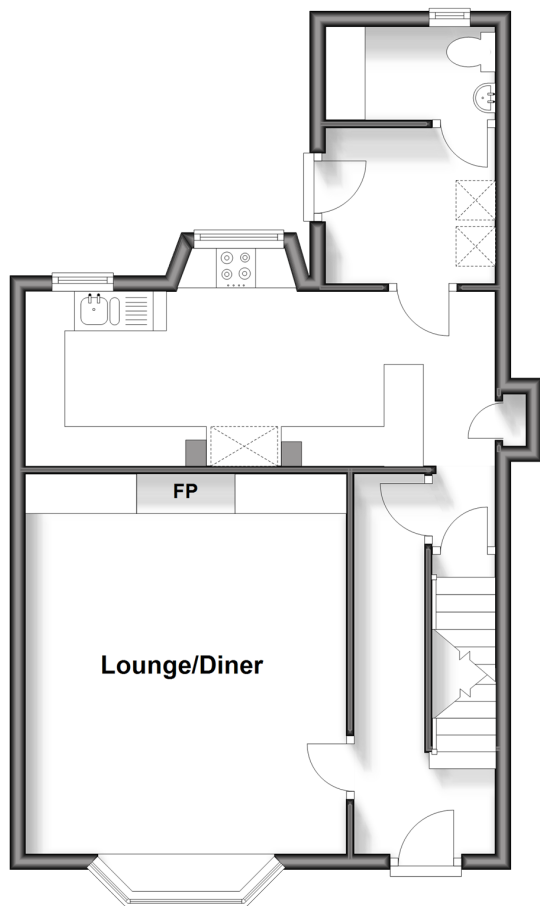
OVER 60?

Secure this property
for up to **59% less!**

Wards
Helping you move forwards

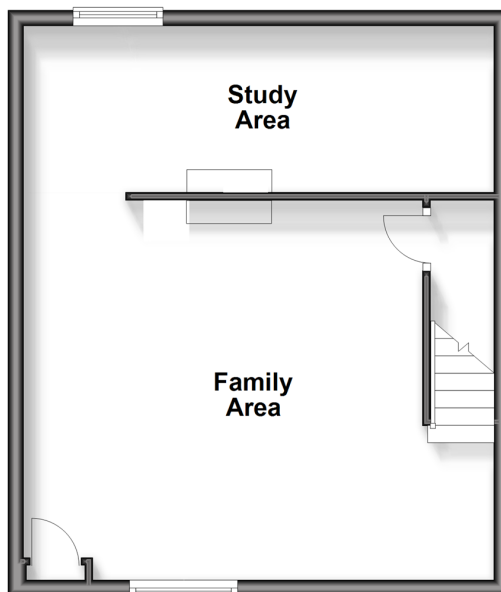
Ground Floor

Approx. 51.1 sq. metres (549.6 sq. feet)



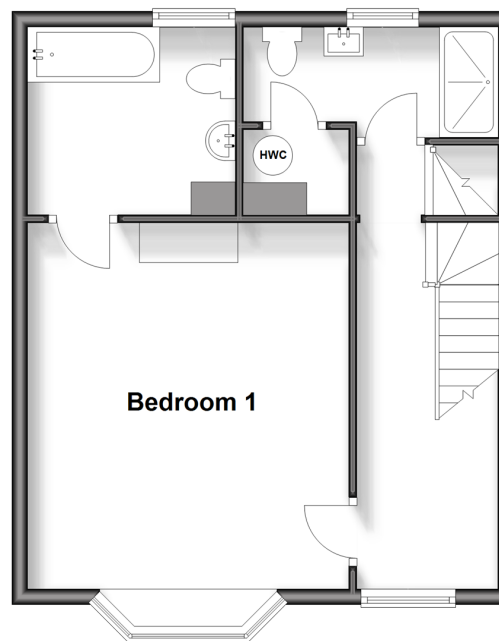
Basement

Approx. 41.9 sq. metres (451.3 sq. feet)



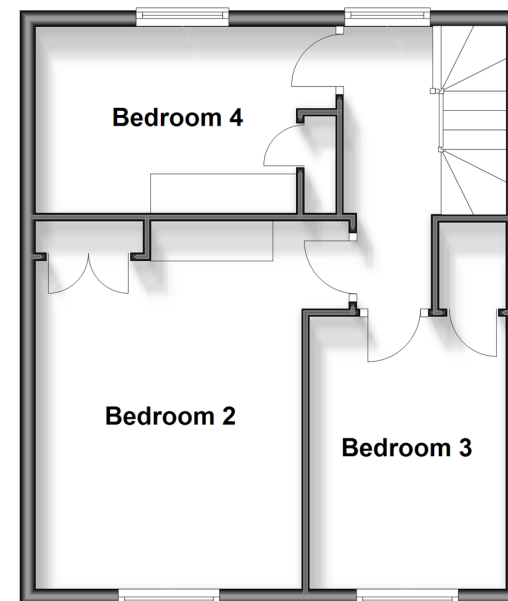
First Floor

Approx. 42.8 sq. metres (461.2 sq. feet)



Second Floor

Approx. 42.5 sq. metres (457.8 sq. feet)



Accommodation

GROUND FLOOR

Entrance Hallway
Lounge/Diner: 15'2 x 13'4 (4.63m x 4.07m)
Kitchen: 19'4 x 7'3 (5.90m x 2.21m)
Utility Room
Cloakroom

BASEMENT

Family Area: 19'9 x 15'4 (6.02m x 4.68m)
Study Area: 19'1 x 7'5 (5.82m x 2.26m)

FIRST FLOOR

Landing
Bedroom 1: 15'1 x 13'6 (4.60m x 4.12m)
En-Suite Bathroom: 8'6 x 7'8 (2.59m x 2.34m)
Shower Room: 10'7 x 5'4 (3.23m x 1.63m)

SECOND FLOOR

Landing
Bedroom 2: 15'9 x 13'8 (4.80m x 4.17m)
Bedroom 3: 12'6 x 8'0 (3.81m x 2.44m)
Bedroom 4: 12'9 x 7'1 (3.89m x 2.16m)

OUTSIDE

Rear Garden



Main features

- Grade II listed town house
- Sold with no onward chain complications
- Popular village location
- Basement converted into a cinema room and a study
- Immaculately presented throughout and bursting with character



Nearest Schools

Primary Schools: Wingham Primary 0.1 miles, Wickhambreaux C of E Primary 1.5 miles
Secondary Schools: Sir Roger Manwoods Grammar School 7.8 miles, Barton Court Grammar School 5.8 miles, Sandwich Tech 7.4 miles



Transport Information

Train Stations: Adisham 2.2 miles, Bekesbourne 2.2 miles, Aylesham 3.2 miles



Address

High Street, Wingham, Canterbury, Kent, CT3



Directions

For directions to this property please contact us.



Call Canterbury Branch 01227 766669 ■ wardsofkent.co.uk



- Legal advice should be taken to verify fixtures/fittings, planning, alterations and/or lease details
- Appliances & services are untested, dimensions are approximate and floor plans are not to scale
- Through a Homewise Home For Life Plan people aged 60+ can secure this property for up to 50% less, by purchasing a Lifetime Lease.



10347728/20250924/CB/CB