



**110 CHESHIRE GARDENS
CHESSINGTON
KT9 2PT
OFFERS IN EXCESS OF
£600,000**

EXTENDED SEMI DETACHED HOUSE

FOUR BEDROOMS

17'5 X 11'11 MODERN KITCHEN DINING ROOM

MODERN BATHROOM & SHOWER ROOM

DOUBLE GLAZED WINDOWS

GAS CENTRAL HEATING

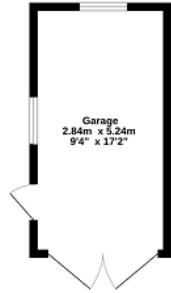
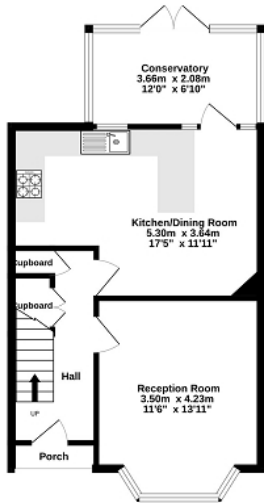
80' WESTERLY FACING GARDEN

GARAGE WITH OWN DRIVEWAY

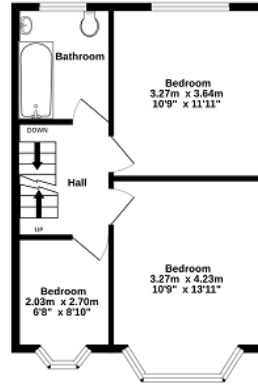
CUL DE SAC LOCATION

AN IDEAL FAMILY HOME

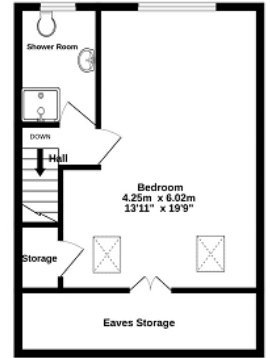
Ground Floor
64.3 sq.m. (692 sq.ft.) approx.



1st Floor
42.5 sq.m. (457 sq.ft.) approx.



2nd Floor
37.9 sq.m. (408 sq.ft.) approx.



TOTAL FLOOR AREA: 144.7 sq.m. (1557 sq.ft.) approx.

Whilst every attempt has been made to ensure the accuracy of the floorplan contained here, measurements of doors, windows, rooms and any other items are approximate and no responsibility is taken for any error, omission or mis-statement. This plan is for illustrative purposes only and should be used as such by any prospective purchaser. The services, systems and appliances shown have not been tested and no guarantee as to their operability or efficiency can be given.

Made with Metropix ©2026