



Epping Green Stud Farm, SG13 8NE
Epping Green





Epping Green Stud Farm, SG13 8NE

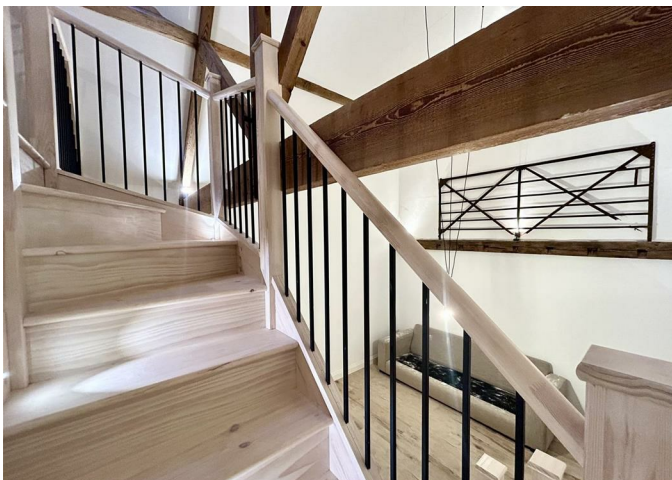
** ALL BILLS INCLUDED **

Immaculately presented one bedroom split level apartment located in gated grounds in the highly desired area of Little Berkhamsted, just a short drive from Hertford Town Centre and close proximity to Bayford station!

This internally spacious property boasts exceptionally high quality finishes along with masses of character! Offering masses of built in storage, mezzanine bedroom with skylight windows, allocated parking and all new appliances - this property is offered part furnished!

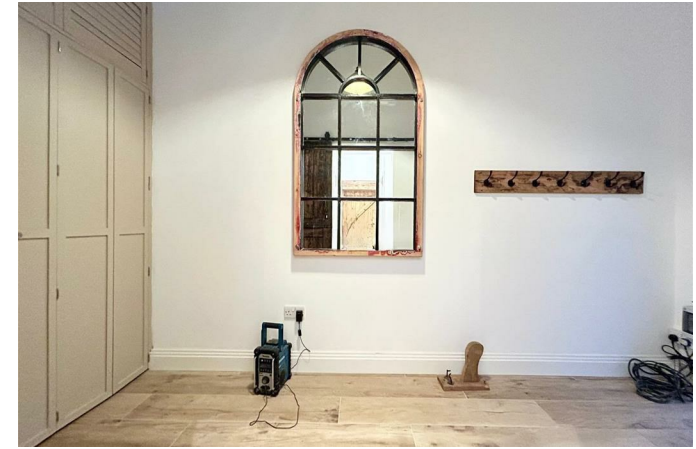
Enquire today to book into our open day on Tuesday 17th March!

£1,450 Per Month



- **ALL BILLS INCLUDED**
- **Duplex split level apartment**
- **12 minute drive to Hertford North & Hertford East railway stations**
- **Parking included**
- **EPC Rating C**

- **Immaculate interior**
- **Open day viewings - Tuesday 17th March**
- **Bayford Railway station located 903m walk**
- **Available 1st May**
- **Enquire to book in to view**







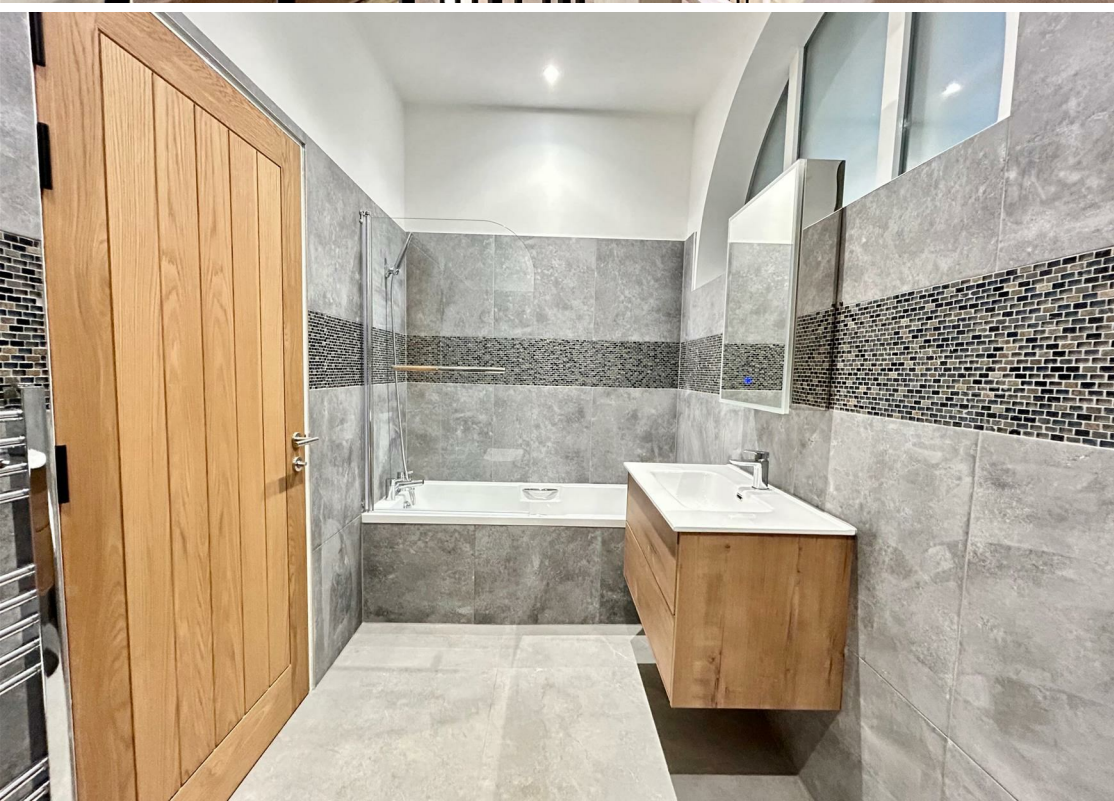
Upper kitchen cabinets in white shaker style, including a stainless steel range hood and a built-in microwave oven.

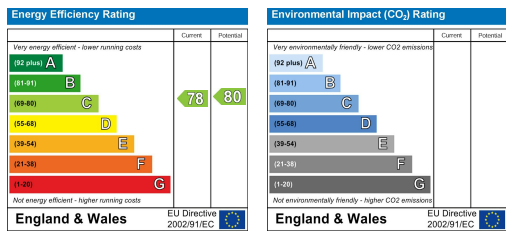
White glossy backsplash with two electrical outlets and under-cabinet lighting.

Lower kitchen cabinets in white shaker style, including a built-in oven and a built-in refrigerator.

Window with white horizontal blinds, showing a view of the outdoors.

Wooden door with black hinges, partially visible on the left side of the image.





THE PROPERTY MISDESCRIPTIONS ACT 1991. The agent has not tested any apparatus, equipment, fixtures or services and so cannot verify that they are in working order, or fit for the purpose. References to the Tenure of a property are based on information supplied by the vendor. The agent has not had sight of the Title documents. A buyer is advised to obtain verification from their Solicitor or Surveyor. Note: These details are correct at time of going to press.

28 Maidenhead Street, Hertford,
Hertfordshire, SG14 1DR
T: 01992 586570
E:
www.kings-group.net

