



Liddell Gardens, NW10

Freehold - £1,350,000

For Sale exclusively via Camerons Stiff & Co.

A substantial terraced family home offering 1,116 sq.ft (GIA) of internal living accommodation over two floors. The house is situated within the coveted 'Kensal Triangle' and offers an outstanding opportunity to acquire a superb family home in a truly enviable location.

The Ground Floor currently has a compartmentalised arrangement that's distinctly cosy. The front reception and dining rooms retain several original architectural features, including ceiling cornicing and fireplaces. Both spaces benefit from exceptional ceiling heights. French doors lead out to a 65 ft mature rear garden. The First Floor comprises three bedrooms, with a family bathroom to the rear. The principal bedroom is situated at the front of the property and is of an excellent size.

Liddell Gardens is situated within a highly sought-after residential enclave off Chamberlayne Road and within walking distance of Queen's Park. A wide variety of independent restaurants, pubs, bars and bistros are a short distance away. Local transport links include Kensal Green (Bakerloo & Overground- Zone 2), Kensal Rise (Mildmay- Zone 2) and Queen's Park (Bakerloo & Lioness- Zone 2).



020 7328 2828

enquiries@cameronsstiff.co.uk

cameronsstiff.co.uk

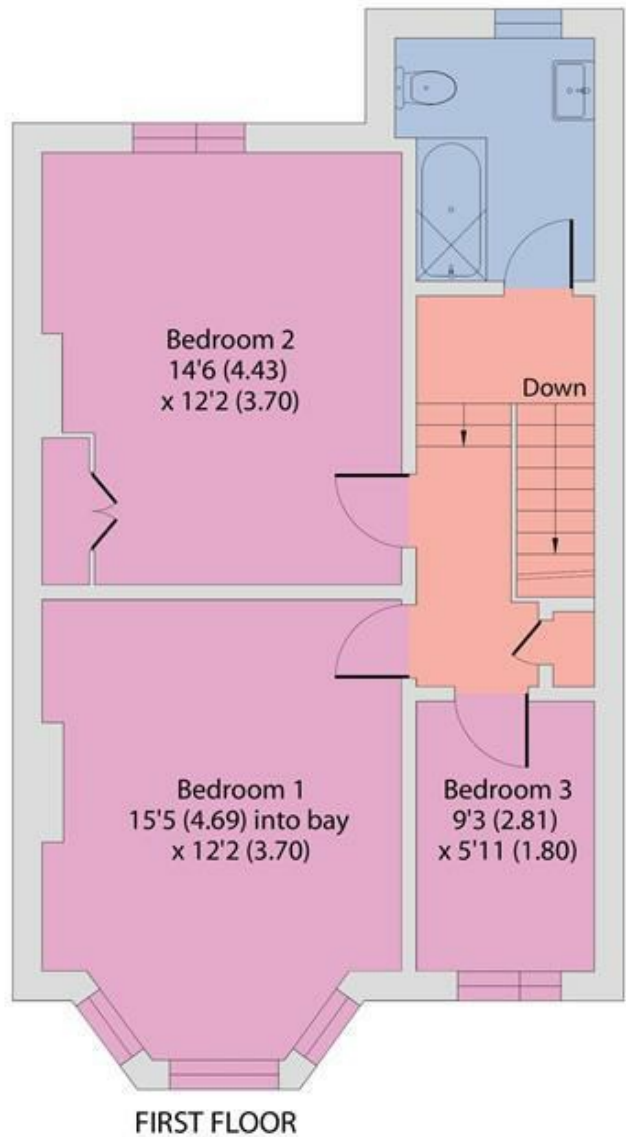
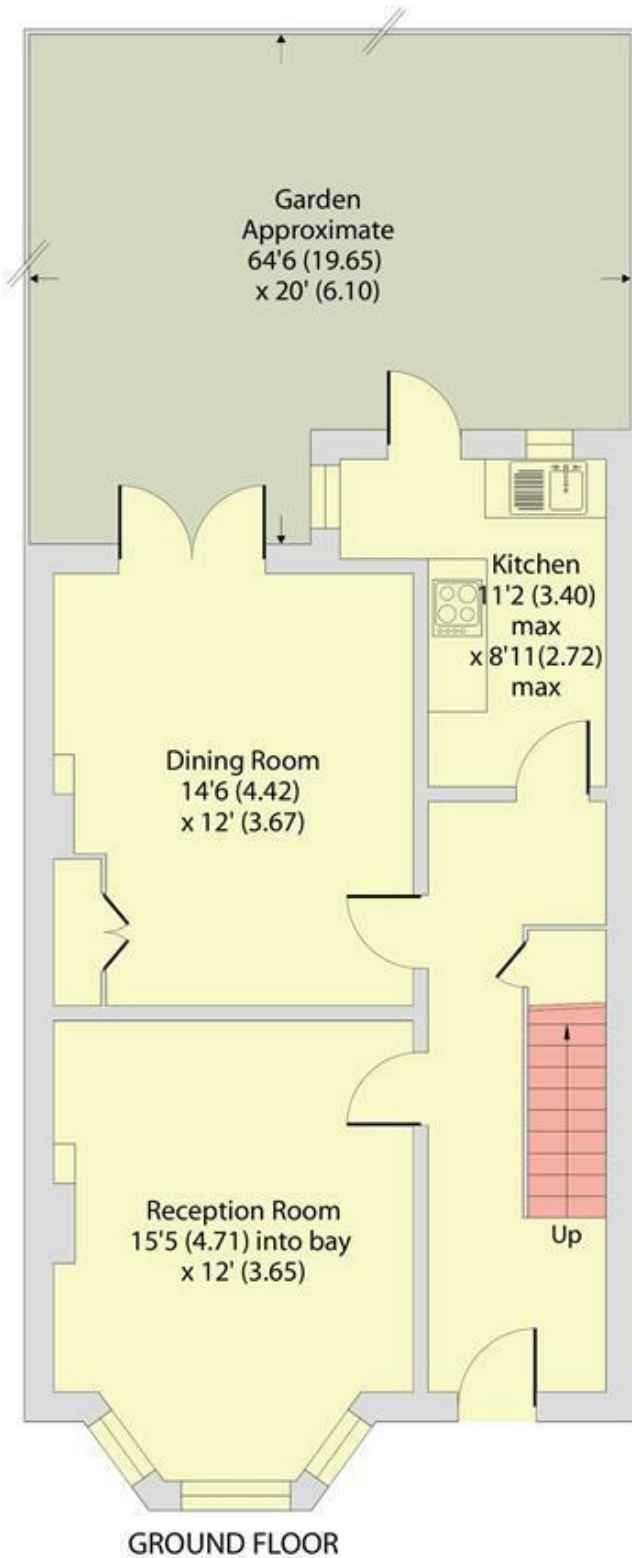




Liddell Gardens, London, NW10

Approximate Area = 1116 sq ft / 103.6 sq m

For identification only - Not to scale



EPC:
Ref: 19647445



Floor plan produced in accordance with RICS Property Measurement 2nd Edition, Incorporating International Property Measurement Standards (IPMS2 Residential). © nichecom 2026. Produced for Camerons Stiff & Co. REF: 1410728

