



## PORTAL WAY, W3

**£2,800 pcm**

This luxury 19th-floor two-bedroom apartment features wide-paneled oak flooring, underfloor heating, a granite-top integrated kitchen, floor-to-ceiling windows, and a broad private glass balcony with uninterrupted views.

- Elevated 19th Floor Views
- Private Glass Balcony
- 24-Hour Concierge Service
- Opposite North Acton Station

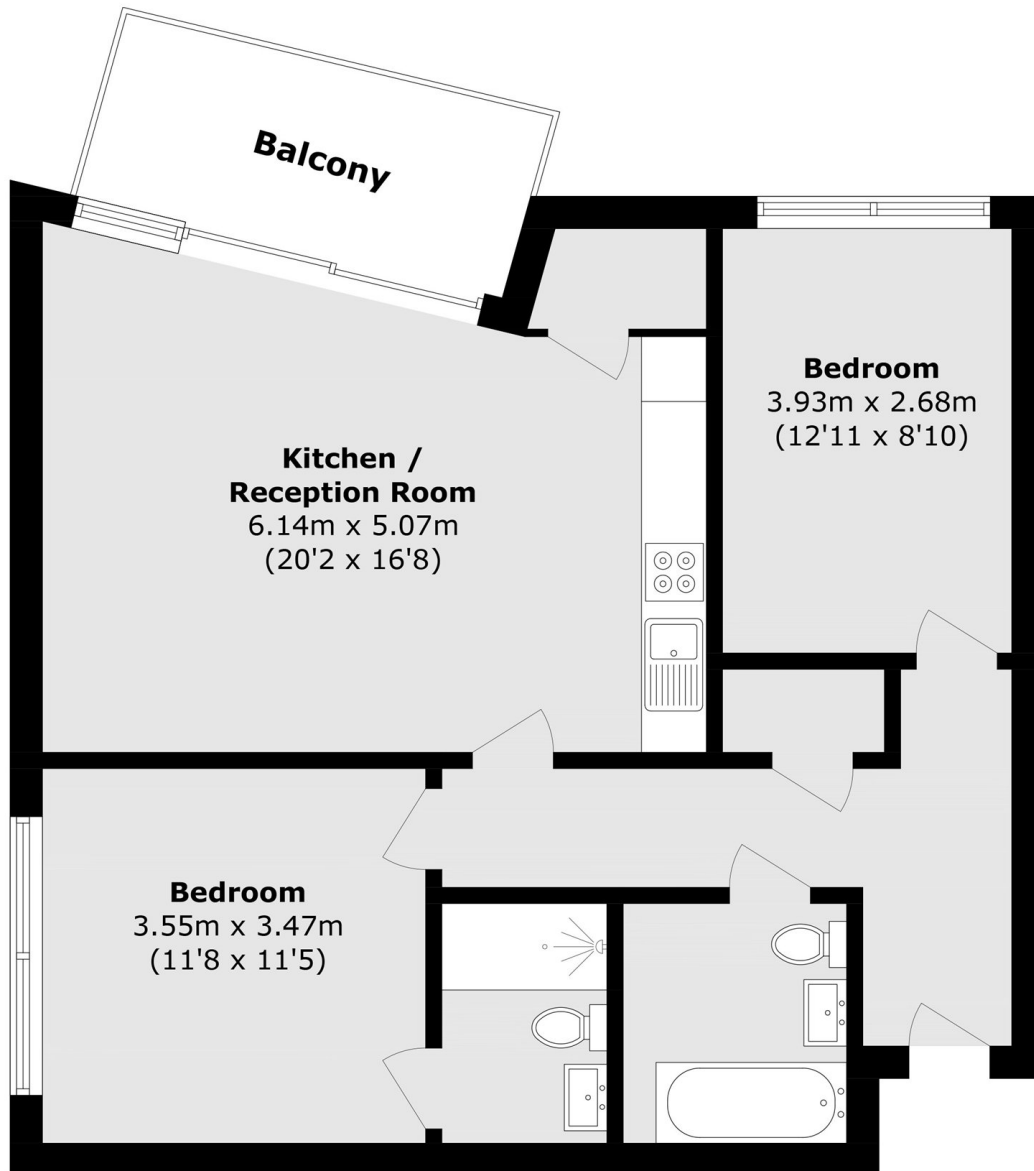


## ABOUT THE HOME

Located in North Acton's iconic One West Point, this pet-friendly development offers a 24-hour concierge and premier fitness amenities, just two minutes from North Acton Central Line station.







Total area (approx.): 72.4 sq. m (779.3 sq. ft)  
Balcony total (approx.): 7.1 sq. m (76.4 sq. ft)

**LiFE RESIDENTIAL**

203 Trentham Court, Victoria  
Road, London, W3 6BT  
Sales: 020 3668 1112  
Lettings: 020 3668 1111

Energy Rating: B. We aim to make our particulars both accurate and reliable. However they are not guaranteed; nor do they form part of an offer or contract. If you require clarification on any points then please contact us, especially if you're traveling some distance to view. Please note that appliances and heating systems have not been tested and therefore no warranties can be given as to their good working order.