



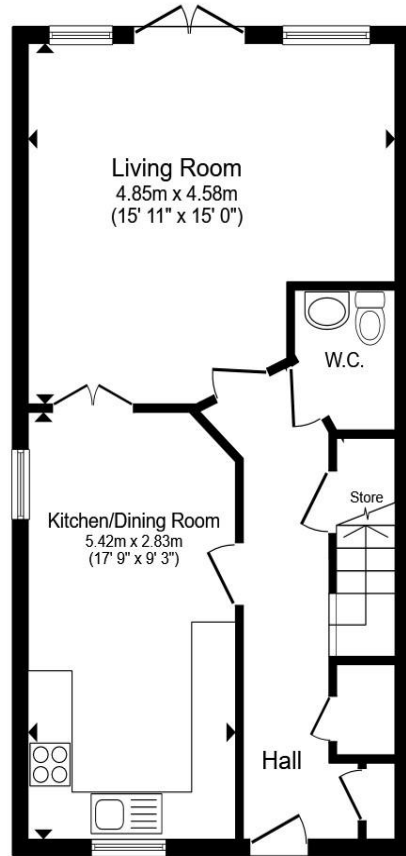
Beatrice Square, Tadworth KT20 5FR

welcome to

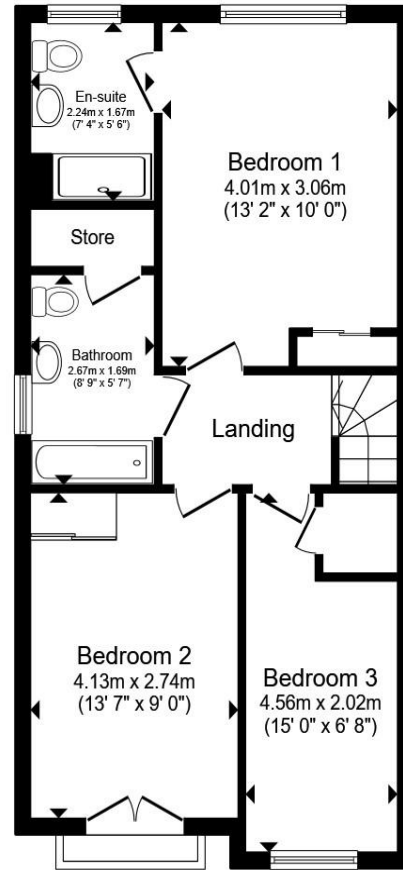
Beatrice Square, Tadworth

Welcome to Beatrice Square, a stylish modern home nestled in the heart of Tadworth Gardens. This beautifully designed property offers the perfect balance of contemporary elegance and everyday practicality, making it ideal for families and professionals alike.





Ground Floor



First Floor



Total floor area 101.9 m² (1,097 sq.ft.) approx

This floor plan is for illustrative purposes only. It is not drawn to scale. Any measurements, floor areas (including any total floor area), openings and orientation are approximate. No details are guaranteed, they cannot be relied upon for any purpose and they do not form part of any agreement. No liability is taken for any error, omission or misstatement. A party must rely upon its own inspection(s). Powered by www.propertybox.io



This attractive family residence is situated within the highly sought after Tadworth Gardens development, surrounded by similar modern homes. Arranged over two floors, the property offers well proportioned accommodation and contemporary finishes throughout.

Ground Floor

- " A spacious and welcoming entrance hall
- " Modern fitted kitchen with integrated appliances
- " Generous living room with direct access to a landscaped rear garden, featuring lawn and patio areas

First Floor

- " Principal bedroom with an impressive en suite shower room
- " Second double bedroom
- " Further single bedroom
- " Family bathroom with a three piece suite

Additional Features

- " Gas central heating
- " Double glazing throughout
- " Off street parking
- " Offered with no forward chain

Location

Beatrice Square enjoys a prime position within Tadworth Gardens, providing convenient access to both Tadworth village and Tattenham Corner. These centres offer a range of local shops, restaurants, cafés, and train stations with direct services to London Bridge. The property is also close to the open countryside of Epsom Downs, while the nearby A217 affords easy access to larger towns and the M25 (Junction 8).

welcome to

Beatrice Square, Tadworth

- Tadworth Gardens Development
- Semi-Detached
- Three Bedrooms
- Two Bathrooms & Ground Floor W.C
- Kitchen with Integrated Appliances

Tenure: Freehold EPC Rating: B

Council Tax Band: E

offers in excess of

£550,000



Please note the marker reflects the postcode not the actual property

view this property online barnardmarcus.co.uk/Property/EPS110128



Property Ref:
EPS110128 - 0005

1. MONEY LAUNDERING REGULATIONS Intending purchasers will be asked to produce identification documentation at a later stage and we would ask for your co-operation in order that there is no delay in agreeing the sale. 2. These particulars do not constitute part or all of an offer or contract. 3. The measurements indicated are supplied for guidance only and as such must be considered incorrect. Potential buyers are advised to recheck measurements before committing to any expense. 4. We have not tested any apparatus, equipment, fixtures or services and it is in the buyers interest to check the working condition of any appliances. 5. Where an EPC, or a Home Report (Scotland only) is held for this property, it is available for inspection at the branch by appointment. If you require a printed version of a Home Report, you will need to pay a reasonable production charge reflecting printing and other costs. 6. We are not able to offer an opinion either written or verbal on the content of these reports and this must be obtained from your legal representative. 7. Whilst we take care in preparing these reports, a buyer should ensure that his/her legal representative confirms as soon as possible all matters relating to title including the extent and boundaries of the property and other important matters before exchange of contracts.



barnard marcus



01372 740911



Epsom@barnardmarcus.co.uk



2 Kings Shade Walk, The Ashley Centre, Epsom,
Surrey, KT19 8EB



barnardmarcus.co.uk