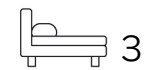




Living
made
better

Carmen Street
Poplar, E14 6AX



Asking Price £425,000

Carmen Street, Poplar, E14 6AX

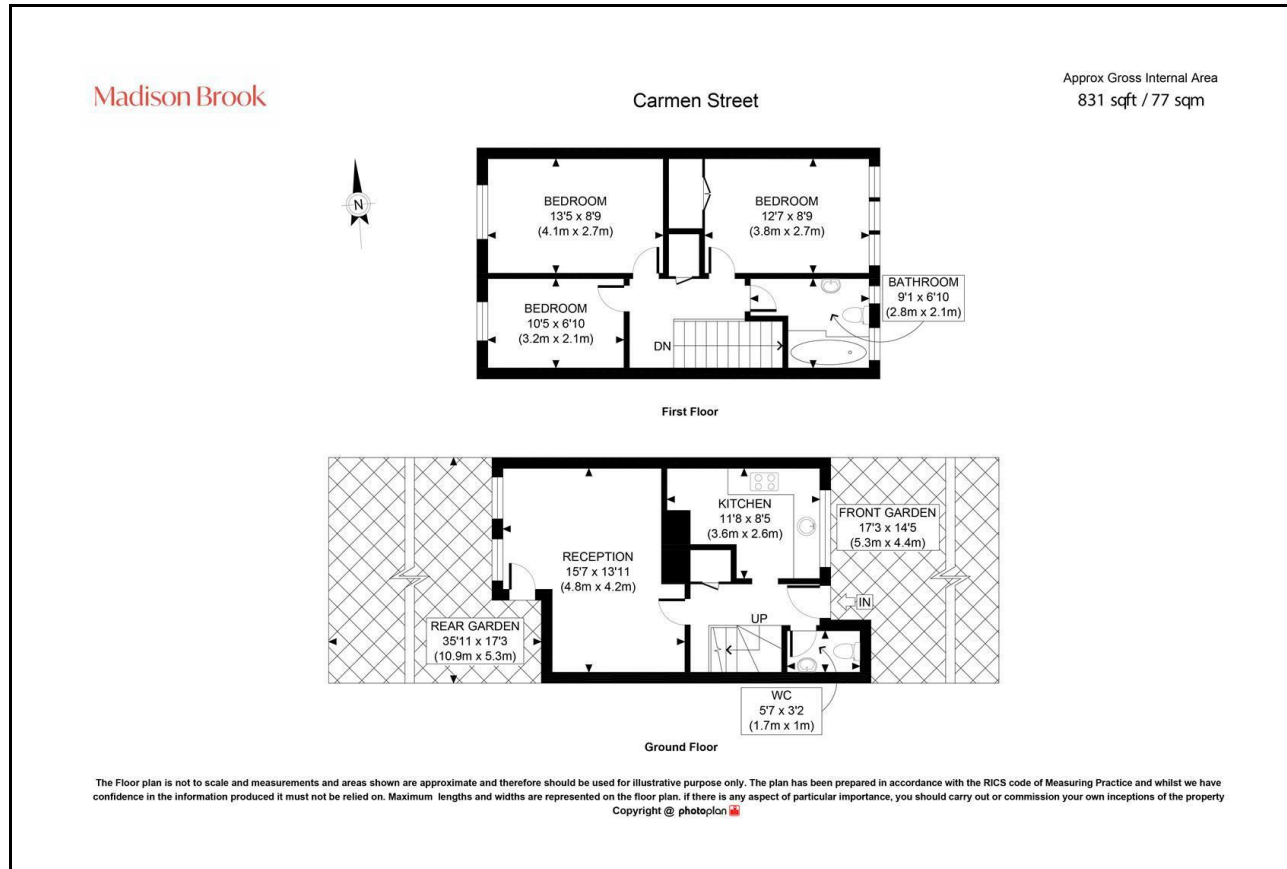
Madison Brook

Property Summary

A well-presented three bedroom maisonette arranged over the ground and first floors, offering 831 sq ft of living space with both front and rear gardens. Ideally located close to local amenities and just moments from Langdon Park DLR, providing easy access to Canary Wharf and the City.

Service Charge: £2,232.19 pa | Ground Rent: £10 pa | Lease Remaining: 88 years

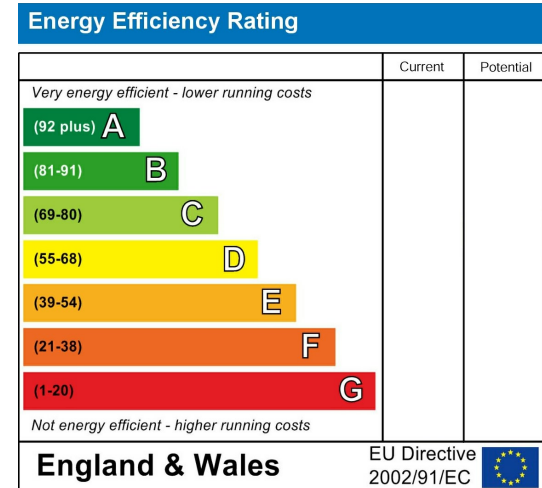
Floorplan



Area Map



Energy Efficiency Graph



These particulars, whilst believed to be accurate are set out as a general outline only for guidance and do not constitute any part of an offer or contract. Intending purchasers should not rely on them as statements of representation of fact, but must satisfy themselves by inspection or otherwise as to their accuracy. No person in this firm's employment has the authority to make or give any representation or warranty in respect of the property.

Unit B 20 Western Gateway, Royal Victoria
Dock, London, E16 1BS
Tel: 020 3946 6000 Email:
docklands@madisonbrook.com
<https://madisonbrook.com/>