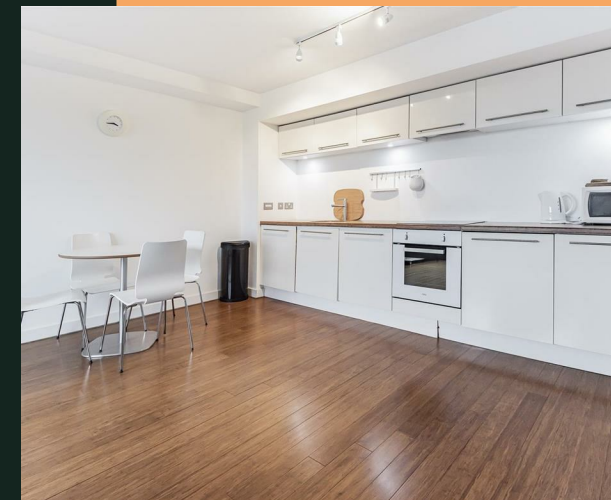


LS11

PROPERTY ADDRESS
203 Greenhouse Leeds
LS11 6AD

Energy Efficiency Rating		Current	Potential
<i>Very energy efficient - lower running costs</i>			
(92 plus) A			
(81-91) B			
(69-80) C			
(55-68) D			
(39-54) E			
(21-38) F			
(1-20) G			
<i>Not energy efficient - higher running costs</i>			
England & Wales		80	81
	EU Directive 2002/91/EC		



- Total cost of first month: £1,148.07 (rent & deposit)
- Available from 26th May
- Open plan
- Furnished
- On-site gym

The spacious apartment briefly comprises of a modern open-plan living and kitchen area with integrated appliances, three bedrooms, one is ensuite and a separate bathroom. There is an on-site gym for residents.

Situated in the regenerated Beeston Road area of Leeds, the building is located close to the M621 and is well connected to the M62 taking you East/West or the M1, taking you North/South, with great bus, cycle and walking links into the city centre.

Available from 26th May subject to acceptable references.

Rent: £995 per calendar month
Holding deposit: £229.615
Deposit: £1,148.07

Please note the photos are of a different apartment in Greenhouse and are just for illustration.

Electricity, water and heating at the building are supplied by Greenhouse Utilities Limited. There is no option to change this to another provider due to the billing of on-site energy production.

The standard broadband is a free service to Tenants. Paid services can be purchased from Hyperoptic or Virgin Media only.



Your Text Here

