



Flat 7, 39 Bramham Gardens, London | Earls Court | London | SW5 0JE

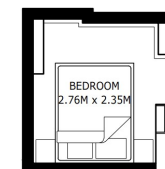
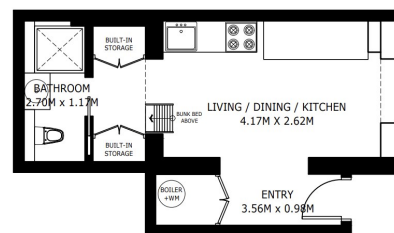
£1,950 Per Month

# SÉJOUR

**Flat 7, 39 Bramham Gardens,  
London | Earls Court  
London | SW5 0JE**

Set within a beautifully refurbished period building in the heart of Earls Court, this stylish ground-floor mezzanine one-bed offers contemporary living in a prime West London location.

- Beautifully refurbished studio apartment
- Prime Earl's Court location
- Bright open-plan living area with modern fitted kitchen
- Fully fitted modern kitchen with integrated appliances
- Exclusive access to private garden square
- Viewing highly recommended



**UNIT 7**

GROSS INTERNAL AREA  
20.70 SQ.M. / 222.81 SQ.FT.

\*SIZES AND DIMENSIONS ARE APPROXIMATE, ACTUAL MAY VARY.

Energy Efficiency Rating		Current	Potential
Very energy efficient - lower running costs			
(92 plus) A			
(81-91) B		83	87
(69-80) C			
(55-68) D			
(39-54) E			
(21-38) F			
(1-20) G			
Not energy efficient - higher running costs			
England & Wales		EU Directive 2002/91/EC	

**Council Tax Band A  
EPC Rating B**

**10 Cromwell Pl  
South Kensington  
London  
SW7 2JN  
020 3865 0611  
lettings@cityrelay.com**