



## Holland Park Gardens, W14

£946 Per week

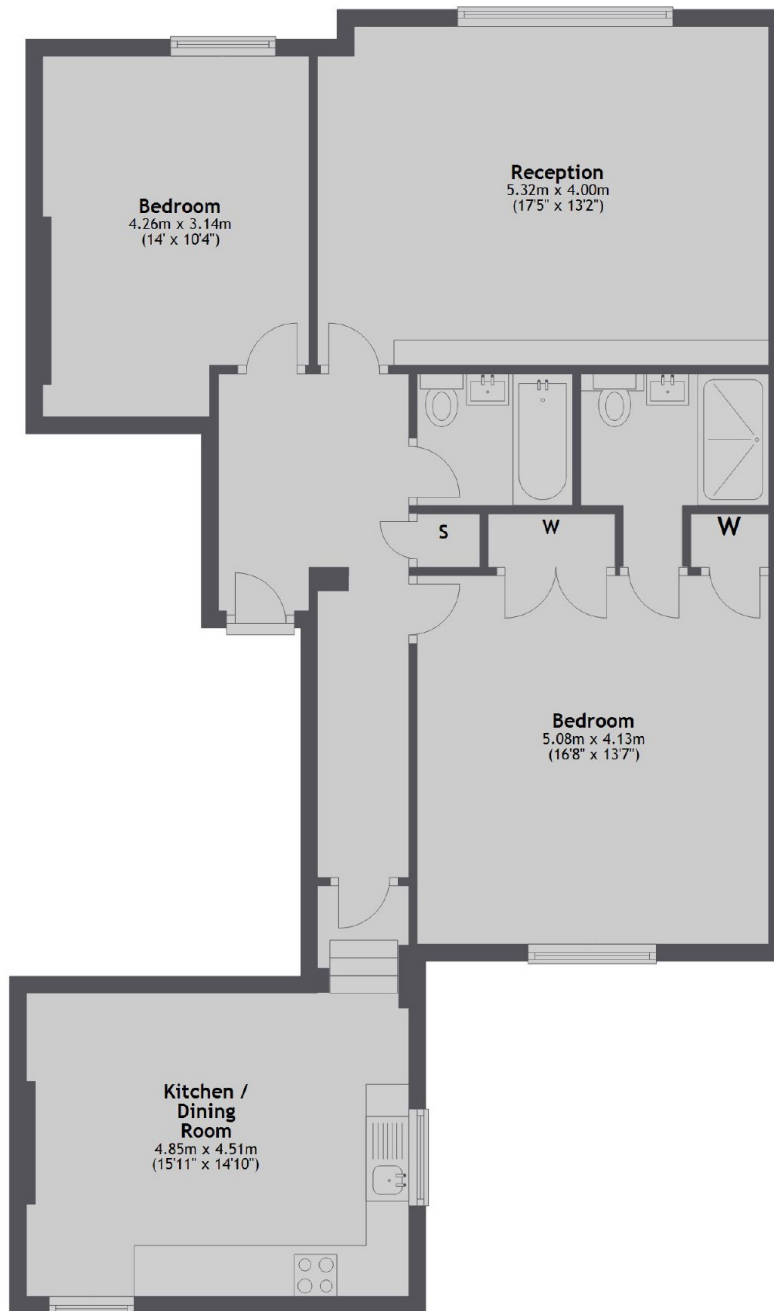
A substantial two bedroom two bathroom flat on the third floor of a period conversion, with a large eat in kitchen and a beautifully bright west facing reception room, ideally located in Holland Park, W11.

The property is well situated on a residential street in the Holland Park area with local shops, cafes and Holland Park tube station only a short distance away.

### Features

- Two Double Bedrooms
- Two Bathrooms
- Separate Eat-In kitchen
- Professionally Managed
- Great Natural Light
- Third Floor
- 976sq ft
- Holland Park

# Holland Park Gardens, London, W14



**Third Floor**

Total area: approx. 90.7 sq. metres (976.6 sq. feet)