

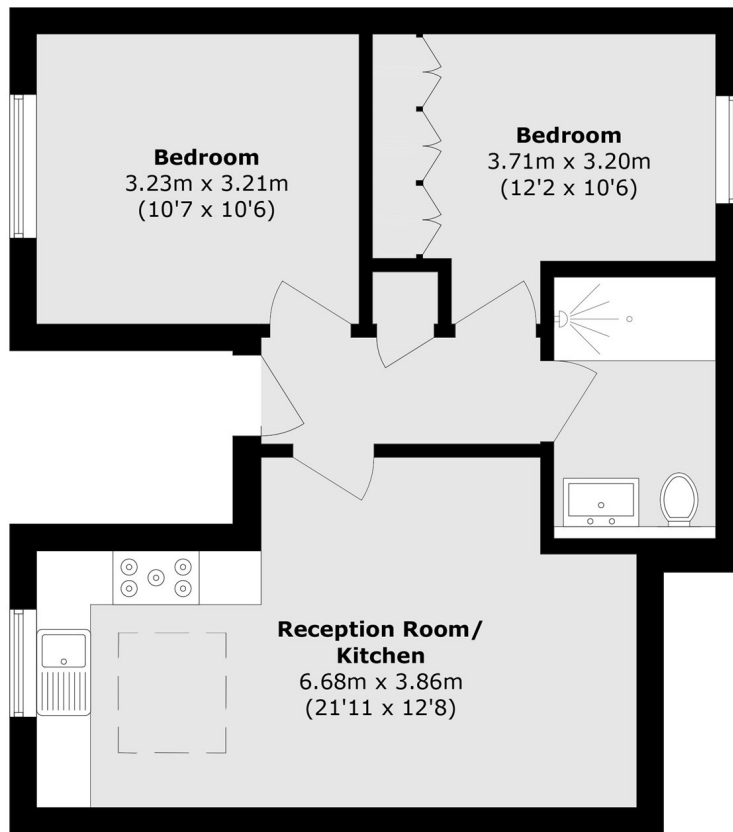


Mill Hill Road, W3

£500,000

A two bedroom Victorian conversion flat in the popular Mill Hill Conservation Area. The flat is in excellent condition throughout with a modern bathroom and an open plan kitchen/living area with a vaulted ceiling.

Ideally located within half a mile of both Acton Town and South Acton stations, offering excellent access into town, as well as the shops and amenities of Churchfield Road and Acton High Street.



Total area (approx.): 54.1 sq. m (582.2 sq. ft)

Robertson Smith & Kempson Acton Sales
137 High Street, Acton,
London, W3 6LY
020 8896 3996
actonsales@robertsonsmithandkempson.co.uk

Energy Rating: C. We aim to make our particulars both accurate and reliable. However they are not guaranteed; nor do they form part of an offer or contract. If you require clarification on any points then please contact us, especially if you're traveling some distance to view. Please note that appliances and heating systems have not been tested and therefore no warranties can be given as to their good working order.