



## Rotherhithe Street, SE16

£1,950 Per calendar month

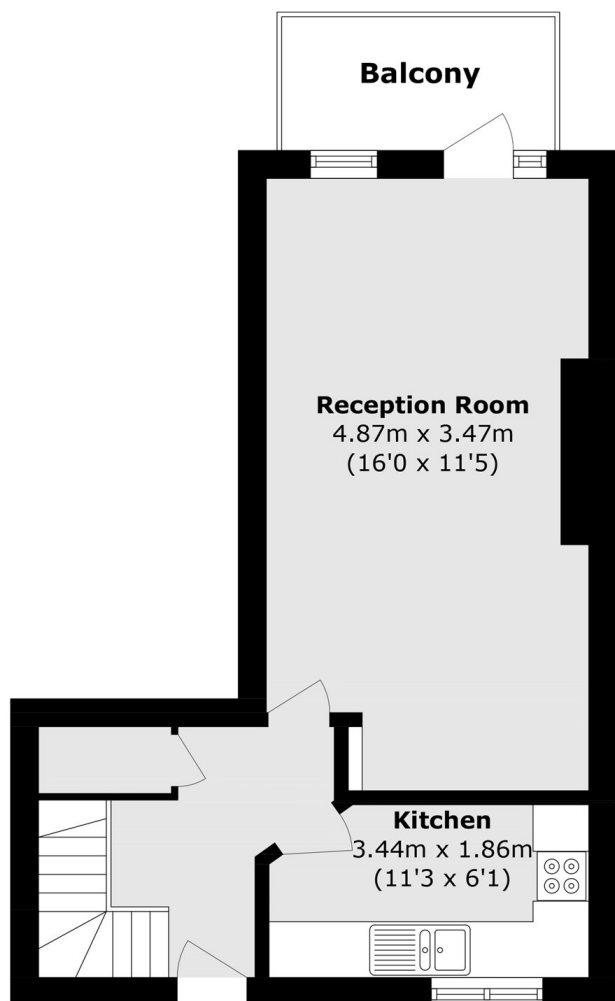
Split over two floors, this property has two double bedrooms, a family bathroom and has separate kitchen and a living space which leads to a private balcony.

Situated by the Thames Path, Bryan House is less than a minute walk from the River Thames and green spaces including Surrey Docks Farm. Canada Water Station provides transport links via the Jubilee Line and Windrush Line. Greenland Pier is half a mile away for direct River Boat access to Canary Wharf.

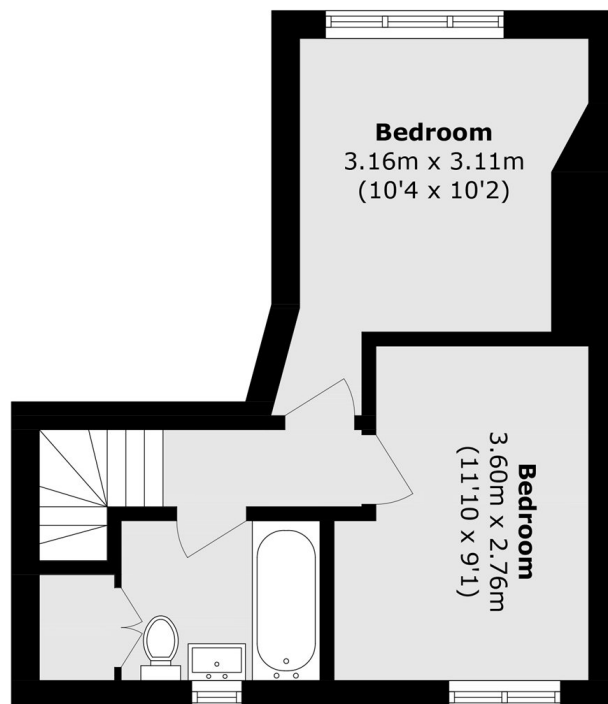
### Features

- Two Double Bedrooms
- One Bathroom
- Separate Kitchen
- Split-Level
- Balcony
- Part Furnished

# Rotherhithe Street, London, SE16



**Second Floor**



**Third Floor**

Total area (approx.): 65.7 sq. m (707.1 sq. ft)  
Balcony area (approx.): 4.5 (48.4 sq. ft)