



Bollo Lane, W3

£375,000

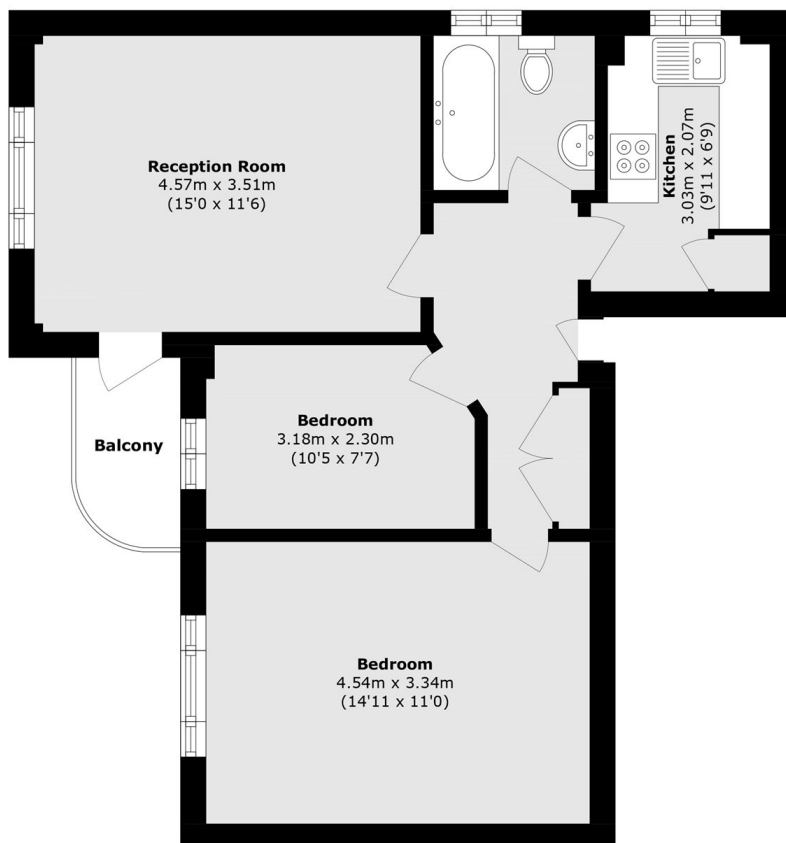
Set within an imposing Art Deco building in the heart of Acton Town, this newly refurbished two-bedroom lateral apartment offers an ideal home for those seeking easy access to Central London and Chiswick Park. The apartment is flooded with natural light and features a spacious living room with direct access to a private balcony. Additional highlights include a bespoke, separate kitchen, a modern family bathroom, and two generously sized bedrooms. Gunnersbury Court also benefits from residents' parking, a long lease, and is offered for sale with no onward chain.

Gunnersbury Court is moments from Acton Town (Piccadilly and District lines) station and within half a mile of South Acton (Overground) station. Gunnersbury Park and Chiswick Business park are within easy reach.

Features

- Two Double Bedrooms
- Newly Renovated
- Art Deco
- Long Lease
- Gated Development
- No Onward Chain

Bollo Lane, London, W3



Total area (approx.): 55.7 sq. m (599.5 sq. ft)

Balcony area (approx.): 2.6 sq. m (27.9 sq. ft)