



Chatsworth Place, Peterborough, PE3

In Excess of **£475,000**





# Chatsworth Place

Peterborough, PE3

Situated within the highly sought-after residential location of Longthorpe, this impressive and substantially extended four-bedroom detached home offers generous and versatile living space, perfectly suited to modern family life.

The property welcomes you via a spacious entrance hallway, leading through to a superb 26ft lounge providing an excellent main reception space. A separate family room enjoys sliding doors opening directly onto the rear garden, creating an ideal indoor-outdoor living environment. The heart of the home is the beautifully re-fitted kitchen diner, thoughtfully designed for both everyday living and entertaining, also benefiting from sliding doors giving direct garden access.

The ground floor further benefits from a contemporary shower room, a dedicated sauna room offering a unique touch of luxury, and a practical utility room providing additional storage and laundry space.

Upstairs, the property offers four well-proportioned bedrooms and a modern family bathroom, making this an ideal home for growing families or those needing flexible working space.

Externally, the home continues to impress with a substantial block-paved driveway providing parking for multiple vehicles and access to the garage and EV charging point. The fully enclosed rear garden is mainly laid to lawn and features a patio seating area along with a summer house.











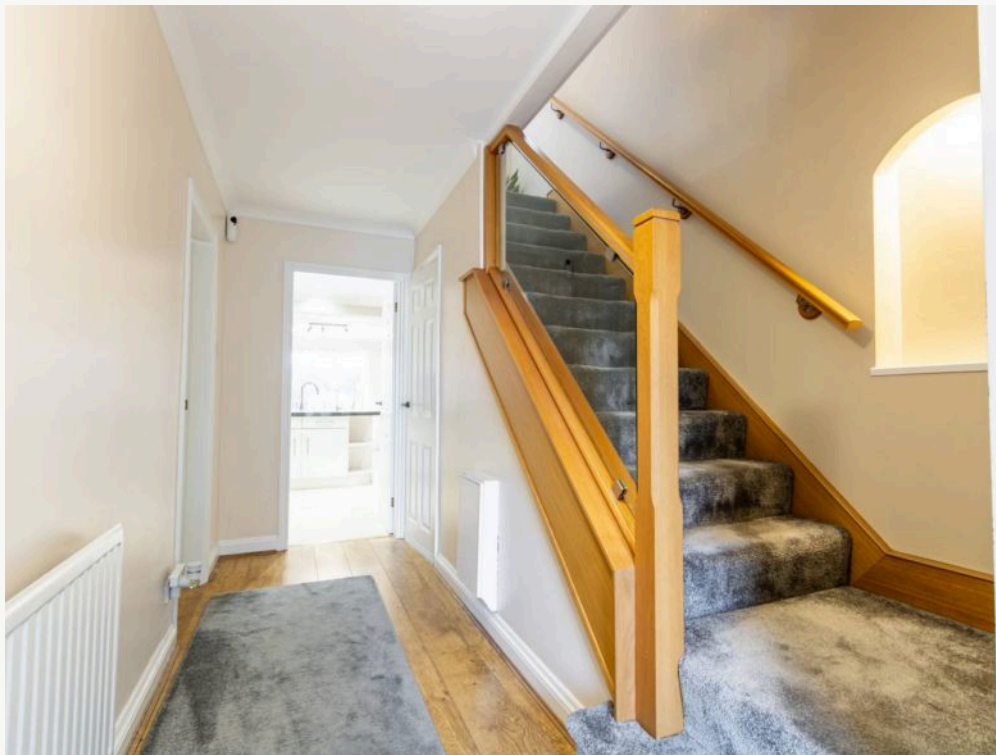




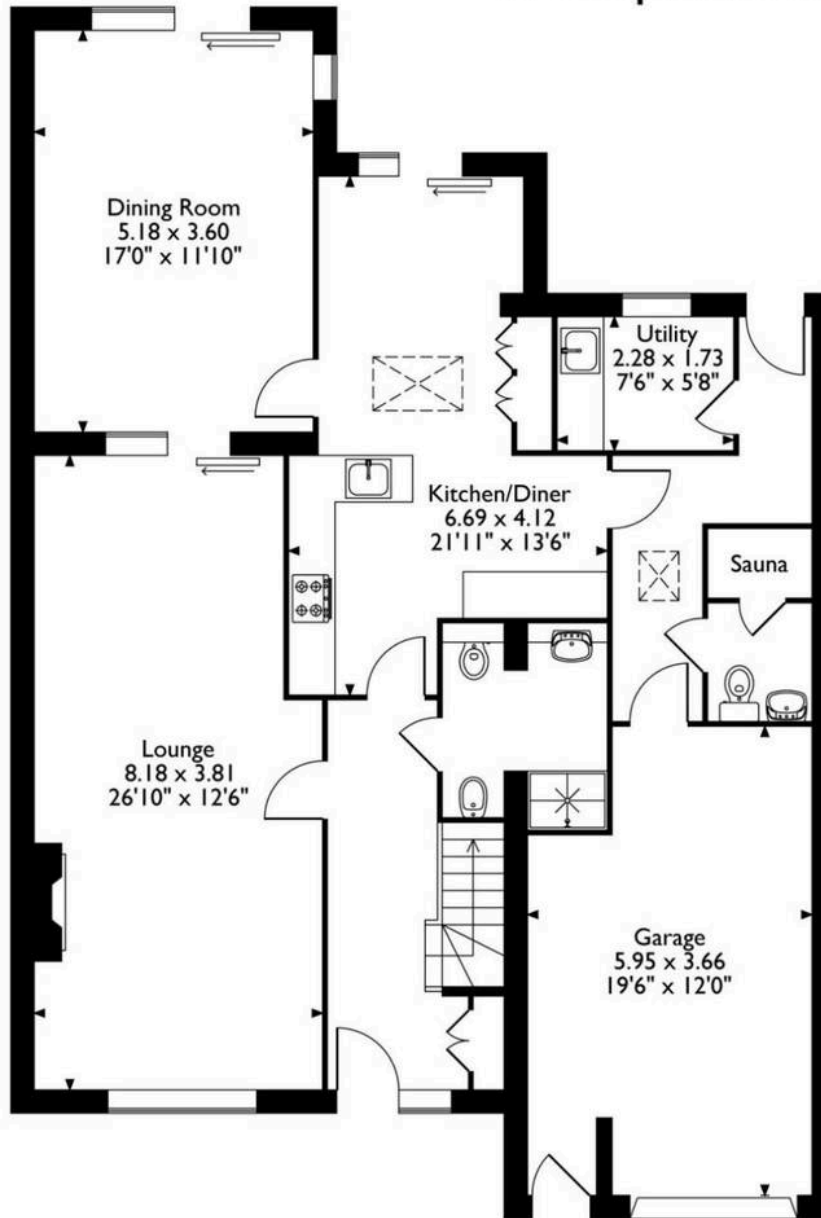




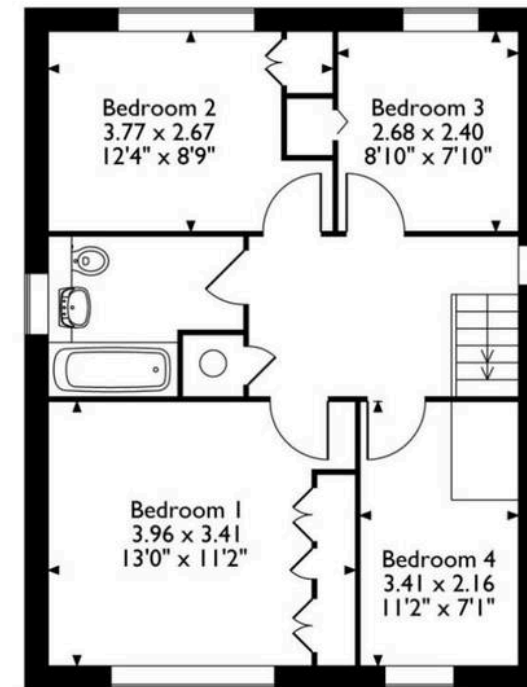




Chatsworth Place, Peterborough  
Approximate Gross Internal Area  
173 Sq M/1862 Sq Ft



**Ground Floor**



**First Floor**

Please note that the location of doors, windows and other items are approximate and this floorplan is to be used for illustrative purposes only. Unauthorized reproduction is prohibited.





# Hortons

Unit 11, Brook Park Gaddesby Lane - LE7 4ZB

07939487526 · [mainul@hortons.co](mailto:mainul@hortons.co) · [hortons.co](http://hortons.co)