



30 Furze Close.

Redhill

Guide Price **£475,000**

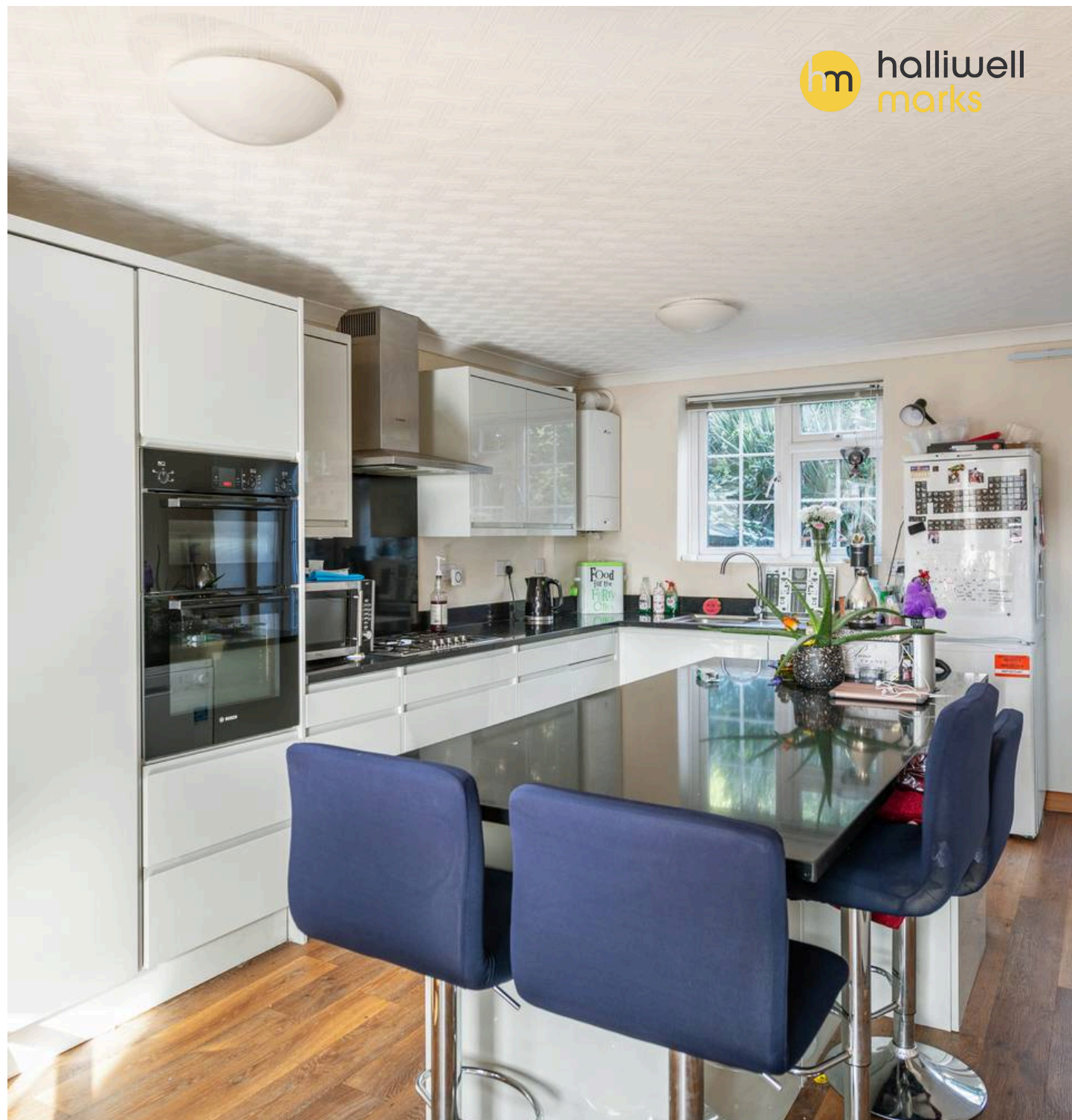


Situated in a highly sought-after location close to Redhill train station, this impressive three bedroom terraced townhouse offers spacious and flexible accommodation arranged over three floors, making it an ideal choice for families and commuters alike. Upon entering the property, you are greeted by a generous 17ft hallway that sets the tone for the rest of the home, complete with a convenient cloakroom and a door leading to the utility room (perfect for laundry and additional storage needs), which in turn provides internal access to the substantial 32ft tandem garage. The first floor boasts a bright and inviting dual aspect open plan living space, thoughtfully designed to maximise both light and functionality. The contemporary kitchen features a large central island, quartz counter tops, and ample cabinetry, creating an excellent space for both every-day living and entertaining. The top floor comprises a landing with loft access, three well-proportioned bedrooms (two of which benefit from fitted wardrobes for added convenience), and a modern family bathroom. This property is presented to the market with no onward chain, ensuring a straightforward purchase process. Residents will enjoy the convenience of off road parking as well as the tandem garage, providing secure storage and parking options. Redhill town centre is just moments away, offering a wide range of amenities including highly regarded schools, a leisure centre, a 24 hour gym, and a brand new cinema complex. The fast train links from Redhill station make commuting to London and other destinations both quick and easy, while the excellent local facilities ensure that everything you need is within easy reach. With its superb location, well-designed living spaces, and practical features throughout, this three bedroom townhouse represents a fantastic opportunity for buyers seeking a comfortable and contemporary home in a vibrant and well-connected area. Early viewing is highly recommended to fully appreciate all that this property has to offer.

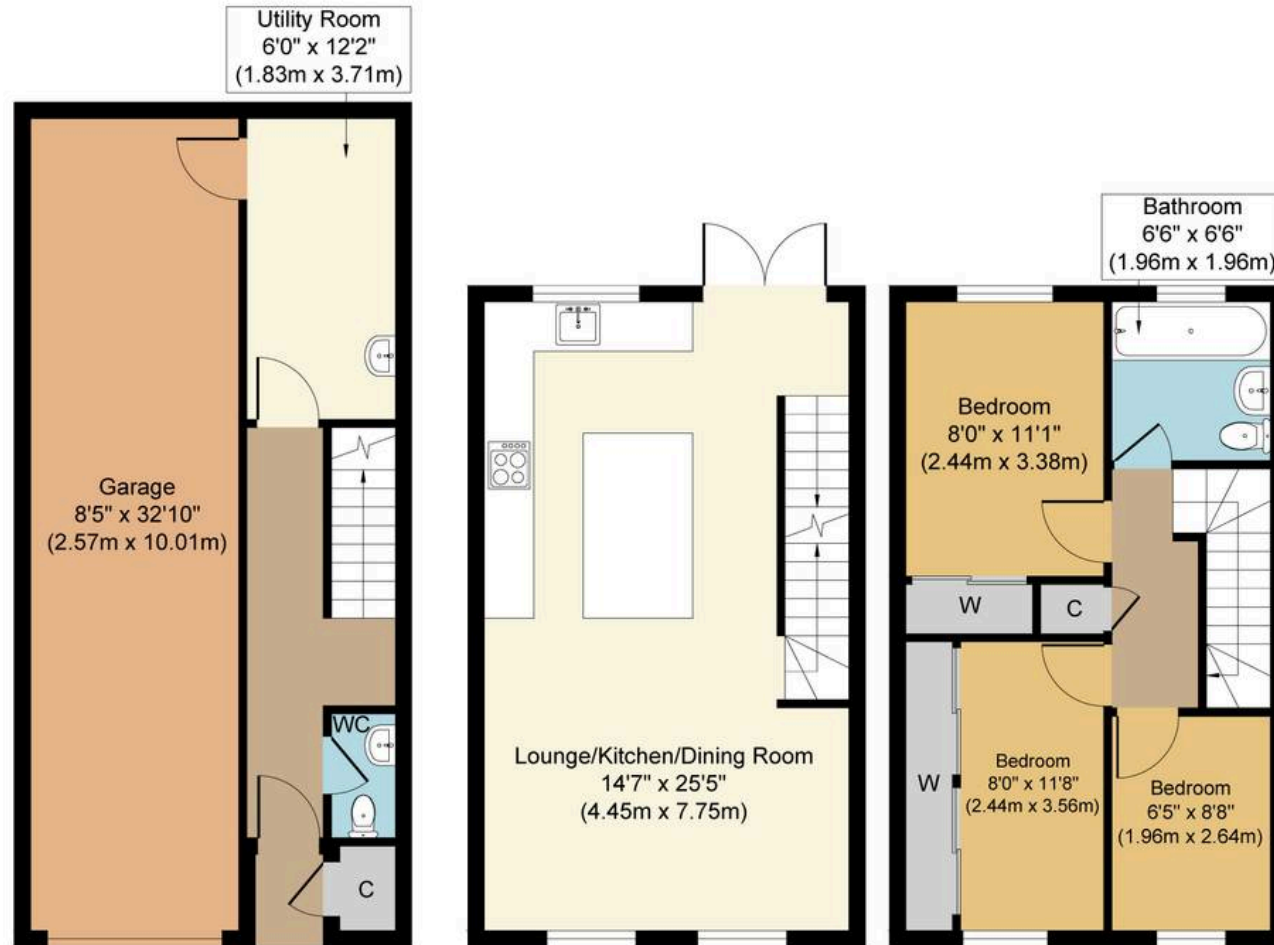
Council Tax band: E

Tenure: Freehold

- Three Bedroom Townhouse
- Great Location Close To Redhill Train Station







Ground Floor
Approximate Floor Area
484 sq. ft
(44.96 sq. m)

First Floor
Approximate Floor Area
374 sq. ft
(34.74 sq. m)

Second Floor
Approximate Floor Area
374 sq. ft
(34.74 sq. m)

Furze Close, RH1
Approx. Gross Internal Floor Area 1232 sq. ft / 114.44 sq. m

Whilst every attempt has been made to ensure the accuracy of the floor plan contained here, measurements of doors, windows, rooms and any other items are approximate and no responsibility is taken for any error, omission, or mis-statement. The measurements should not be relied upon for valuation, transaction and/or funding purposes. This plan is for illustrative purposes only and should be used as such by any prospective purchaser or tenant. The services, systems and appliances shown have not been tested and no guarantee as to their operability or efficiency can be given.

