



11 Maplefield, Park Street, St. Albans, Hertfordshire, AL2 2BD

Guide Price £479,950

11 Maplefield, Park Street, St. Albans, Hertfordshire, AL2 2BD

Located in the desirable area of Maplefield, Park Street, St. Albans, this charming mid-terraced house presents an excellent opportunity for both first-time buyers and families alike. Spanning an impressive 955 square feet, the property boasts a well-proportioned living room that invites relaxation and social gatherings. The ample kitchen provides a functional space with integrated appliances.

On the first floor, you will find three inviting bedrooms, perfect for accommodating family members or guests. The main bathroom is conveniently located, ensuring ease of access for all. This home is offered to the market with no upper chain, allowing for a smooth transition into your new abode.

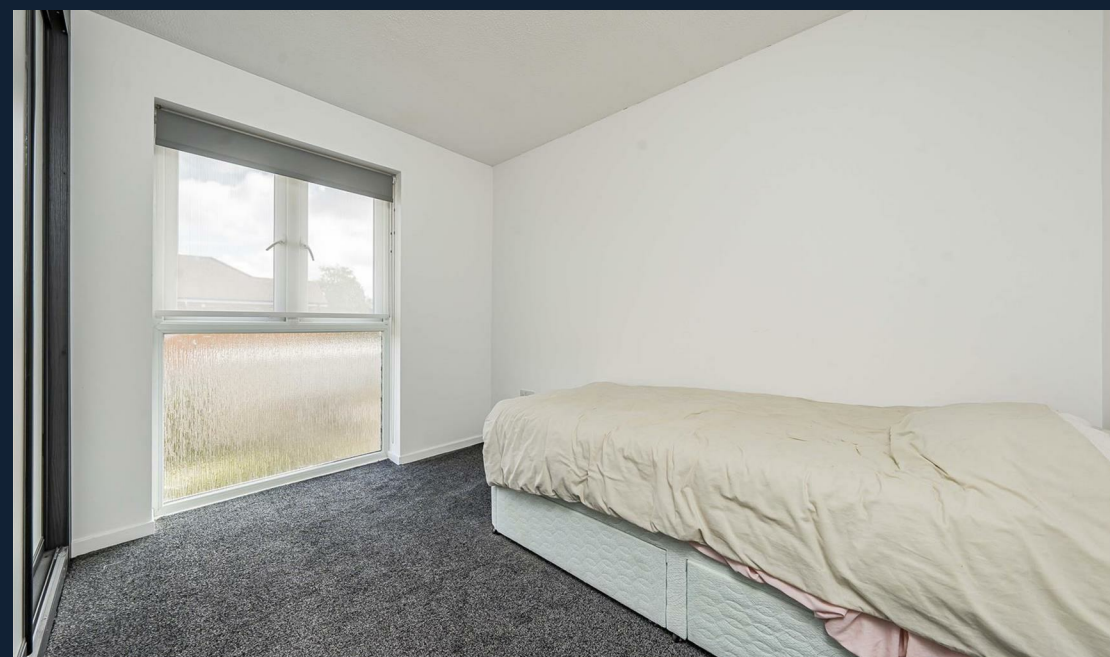
The outdoor space is equally appealing, featuring a rear garden that is predominantly laid to lawn, complemented by a patio area ideal for al fresco dining or enjoying a sunny afternoon. Additionally, a garage at the rear of the property offers valuable storage options, off-street parking is available at the back of the home, providing convenience for multiple vehicles.

Situated in close proximity to local amenities, excellent transport links, and highly regarded schools, this property is perfectly positioned for modern living. Whether you are looking to settle down in a vibrant community or seeking a sound investment, this terraced house in St. Albans is a must-see.



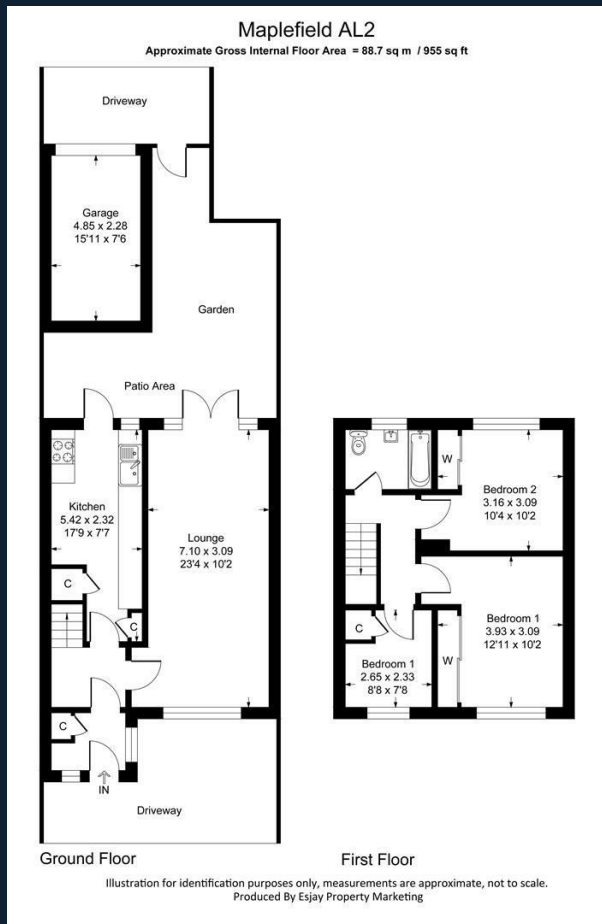


- No Upper Chain
- Mid Terraced Home
- Three Bedrooms
- Generous Sized Lounge
 - Garage
- Off Street Parking To The Rear
- Close Proximity to Local Amenities
 - Good Transport Links
 - Council Tax Band D





CARTER HAYWARD
INDEPENDENT ESTATE AGENTS



CARTER HAYWARD
INDEPENDENT ESTATE AGENTS

119 Oakwood Road, Bricket Wood, St Albans,
Hertfordshire, AL2 3QB

Tel: 01923 682 888
Email: sales@carterhayward.co.uk

Web: www.carterhayward.co.uk

