



Guide Price
£440,000

Freehold

2x  1x  1x 

**Tenby Road, Welling,
Kent, DA16**

Wards
Helping you move forwards



Main features

- Ready to move into
- Extended kitchen/diner
- Low maintenance rear garden with patio and gazebo
- Located within walking distance to local shops and schools
- Driveway to the front of the property

Accommodation

GROUND FLOOR

Hallway

Kitchen/Diner: 20'0 x 12'5 (6.10m x 3.79m)

Lounge: 13'6 x 12'4 (4.12m x 3.76m)

FIRST FLOOR

Landing

Bedroom 1: 13'7 x 8'8 (4.14m x 2.64m)

Bedroom 2: 7'9 x 6'7 (2.36m x 2.01m)

Bathroom

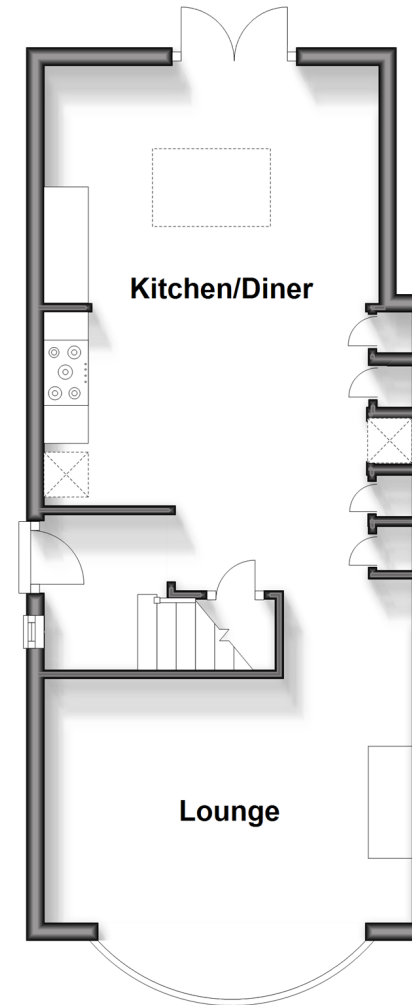
OUTSIDE

Driveway

Rear Garden

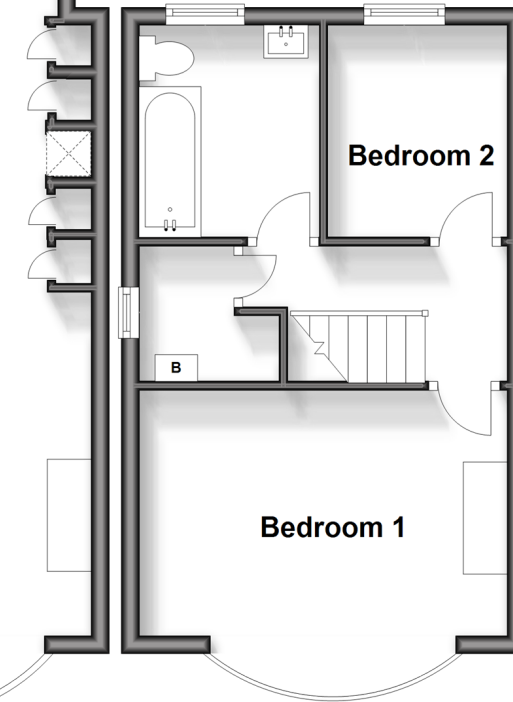
Ground Floor

Approx. 39.3 sq. metres (422.6 sq. feet)



First Floor

Approx. 28.7 sq. metres (309.4 sq. feet)



Call Welling - 020 8301 6679 ■ wardsof Kent.co.uk



15009061/20260321/RL/LK