



Muswell Hill, N10

£850,000

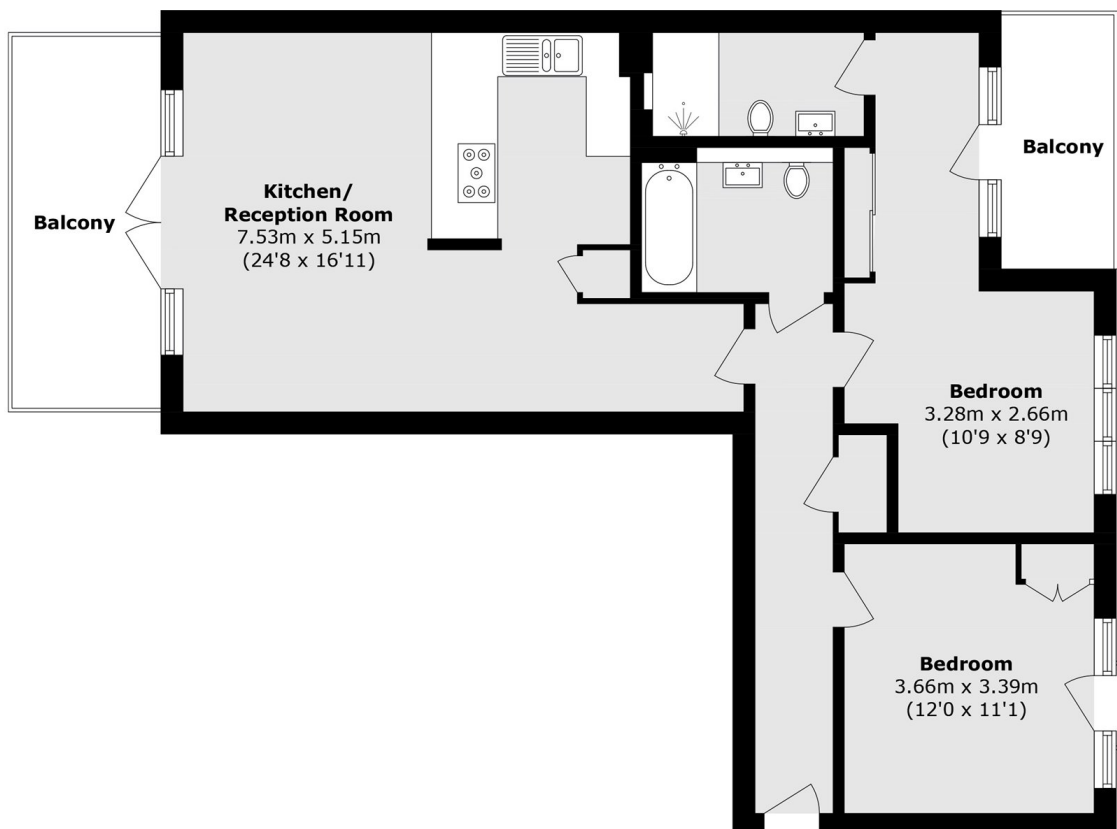
Situated on the third floor of a bespoke development, this two-bedroom apartment features two private balconies with stunning London skyline views, an open-plan kitchen/living area, and two bathrooms, including an en suite. Further benefits include a stunning communal garden, an allocated undercroft parking space, and secure bicycle storage.

Situated in the heart of Muswell Hill, just moments from the Broadway's excellent selection of shops, cafés and boutiques. The property is also conveniently located for the open spaces of Alexandra Palace and the Parkland Walk, with excellent transport links nearby.

Features

- Two Bedrooms
- Two Bathrooms
- Allocated Parking
- Lift Access
- Stunning Balcony Views
- Modern Finish

Muswell Hill, London, N10



Third Floor

Total Area (approx.): 83.2 sq. m (895.6 sq. ft)
Balcony Total (approx.): 16.2 sq. m (174.4 sq. ft)