



Gorse Close, Brandon, Suffolk, IP27 9DE

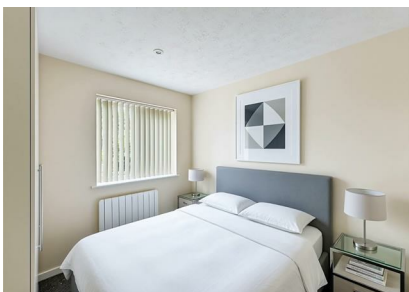
Rent - £750 PCM Deposit - £865

Delightful mid-terrace bungalow offers a perfect blend of comfort and convenience. With one well-proportioned bedroom, this property is ideal for individuals or couples. Recently decorated, the interior boasts a fresh and modern feel, making it easy for you to move in and make it your own. One of the standout features of this property is the off-street parking, providing a secure and convenient space for your vehicle.

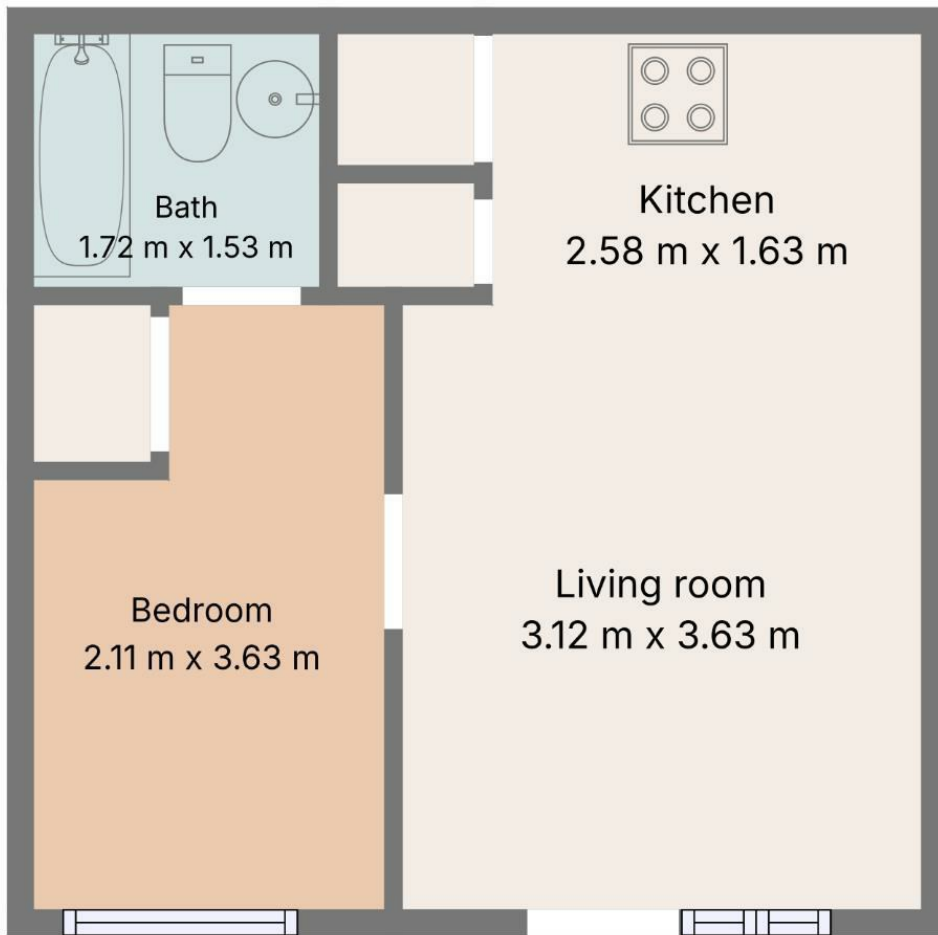
Agent's Note:

Please be aware that images of the property may have been digitally enhanced, edited, or staged using artificial intelligence, and may not reflect the current presentation or furnishings.

- MID TERRACED BUNGALOW
- ENSUITE BATHROOM
- RECENTLY DECORATED
- OFF ROAD PARKING
- ONE BEDROOM
- ELECTRIC HEATING & ENERGY RATING - E
- COUNCIL TAX BAND - A
- AVAILABLE BEGINNING OF JULY



Council Tax Band: A - EPC Rating: E 53



Sizes and dimensions are approximate, actual may vary.

