

# Lime Walk

Maidenhead • Berkshire • SL6 6QB

Guide Price: £1,500,000



coopers  
est 1986

# Lime Walk

**Maidenhead • Berkshire • SL6 6QB**

A rare opportunity to purchase a spacious four bedroom, two bathroom family home on Lime Walk, widely regarded as one of Maidenhead's most sought after residential roads. Offering well proportioned accommodation and an enviable location, the property combines the tranquillity of a tree lined setting with easy access to the town centre, Maidenhead Station (Elizabeth Line) and excellent schooling. The ground floor of the property comprises hallway with doors leading to the 24ft living room, 23ft family room, 14ft dining room, 24ft kitchen/breakfast room, 13ft utility room and W/C. To the first floor, the impressive 18ft main bedroom benefits from an 11ft dressing room and a four piece en-suite bathroom.

There are also three further double bedrooms, all generously proportioned, along with a family bathroom. Outside there is off street parking and private rear garden.

Four bedroom house

Detached

Pinkneys Green

Sought after road

Potential to extend (STPP)

Generous plot

In need of modernisation

24FT double garage

Off street parking

Private rear garden

These particulars are intended as a guide and must not be relied upon as statements of fact. Your attention is drawn to the Important Notice on the last page.





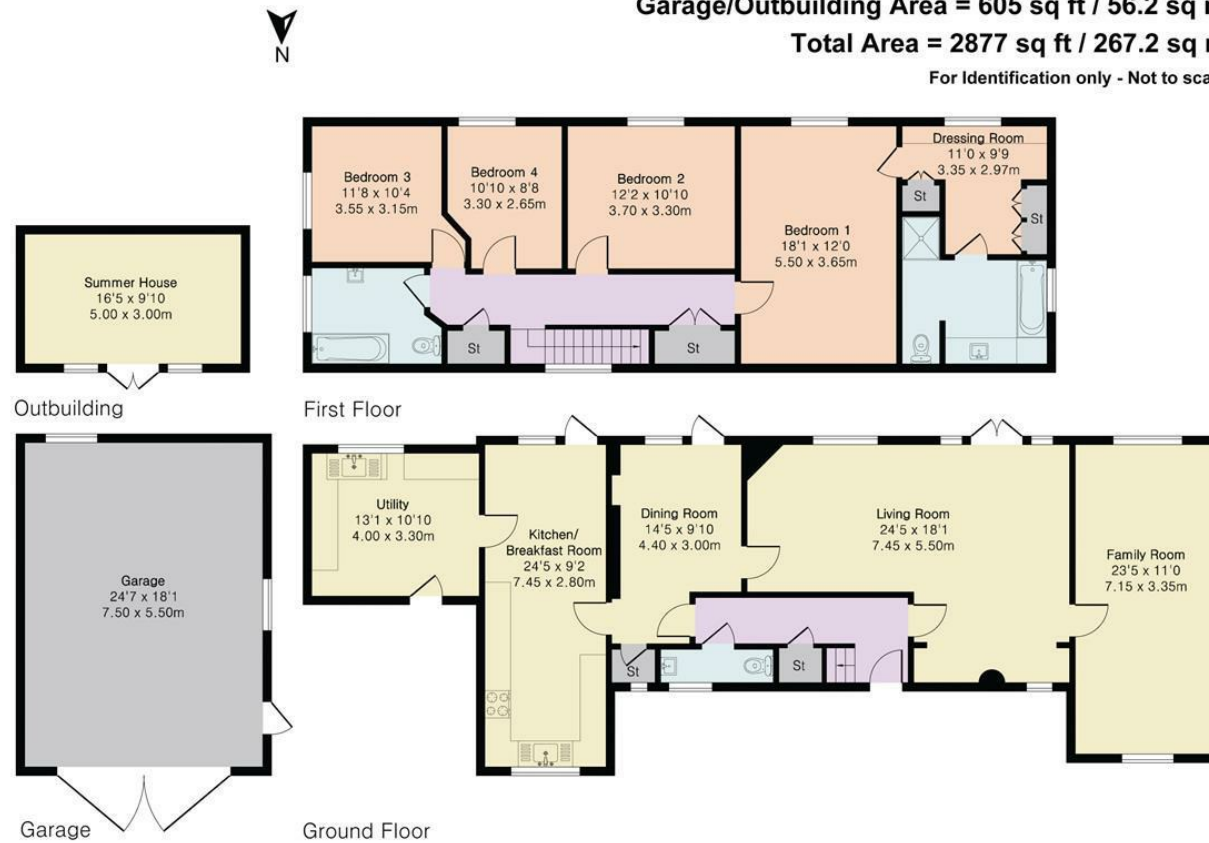
# Lime Walk, Maidenhead, SL6

Main House Area = 2272 sq ft / 211.0 sq m

Garage/Outbuilding Area = 605 sq ft / 56.2 sq m

Total Area = 2877 sq ft / 267.2 sq m

For Identification only - Not to scale

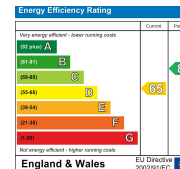


Floor plan produced in accordance with RICS Property Measurement 2nd Edition. Although Pink Plan Ltd ensures the highest level of accuracy, measurements of doors, windows and rooms are approximate and no responsibility is taken for error, omission or misstatement. These plans are for representation purposes only and no guarantee is given on the total square footage of the property within this plan. The figure icon is for initial guidance only and should not be relied on as a basis of valuation.



**42 Queen Street, Maidenhead,  
SL6 1HZ**  
maidenhead@coopersresidential.co.uk

**CoopersResidential.co.uk**



Important Notice: These particulars, whilst believed to be accurate are set out as a general outline only for guidance and do not constitute any part of an offer or contract. Intending purchasers should not rely on them as statements or representation of fact, but must satisfy themselves by inspection or otherwise has the authority to make or give any representation or warranty in respect of the property.

**coopers**  
est 1986