



Hammersmith
Grove W6



Hammersmith Grove W6

6 BEDROOMS

KITCHEN/DINING/FAMILY ROOM

FORMAL DOUBLE RECEPTION

3 BATHROOMS (2 EN SUITE)

GUEST CLOAKROOM & UTILITY ROOM

STUDY

80' APX WESTERLY GARDEN

**OFF STREET PARKING FOR 2/3 CARS & SIDE
ACCESS/BIKE STORAGE**

EPC RATING D 67

COUNCIL TAX BAND H

A truly fabulous semi-detached late Georgian villa-style residence with 2 amazing floors of lateral living/entertaining space and 2 of bedrooms. There is also a fantastic 80' apx westerly garden which spans 30' in width and off street parking for 2-3 cars. The contemporary kitchen/dining/family room is open from front to back with designated family/dining and kitchen areas and opens onto the garden. There is also a utility and cloakroom on this floor. The first floor has an exceptional double reception (which is 36'7 x 18'3) and has elegant bay window/French doors to the front. There are 6 bedrooms and 3 bathrooms on the upper floors including the amazing principal bedroom suite which occupies the entire 2nd floor and has a walk-in dressing room, en suite bathroom and study. This very handsome house has a great feel and commands rarity value as there is a limited supply of such houses in the area.

**PRICE GUIDE £5,000,000
FREEHOLD**

SUBJECT TO CONTRACT

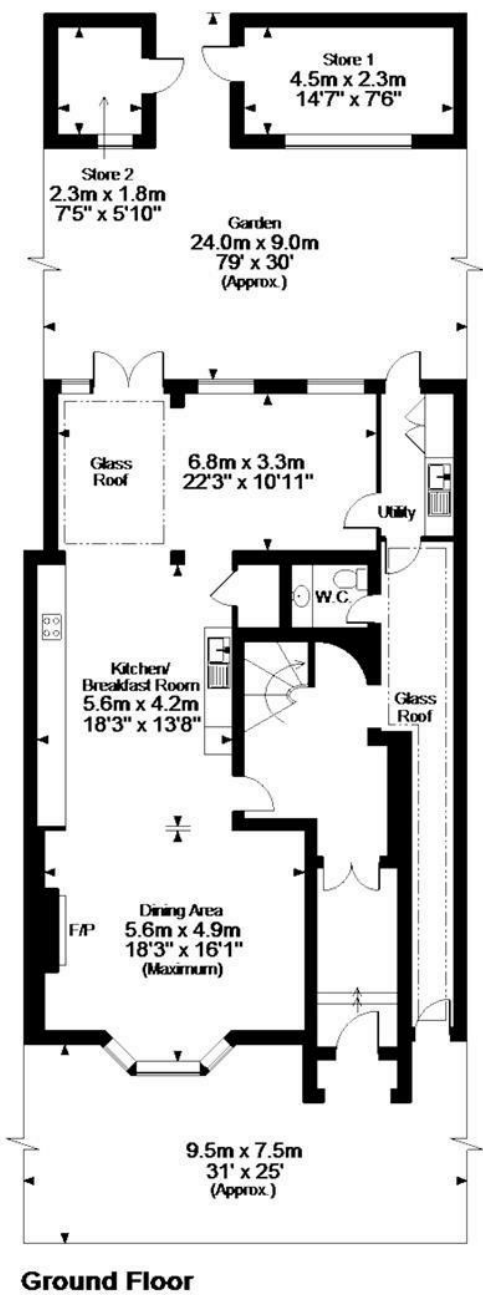




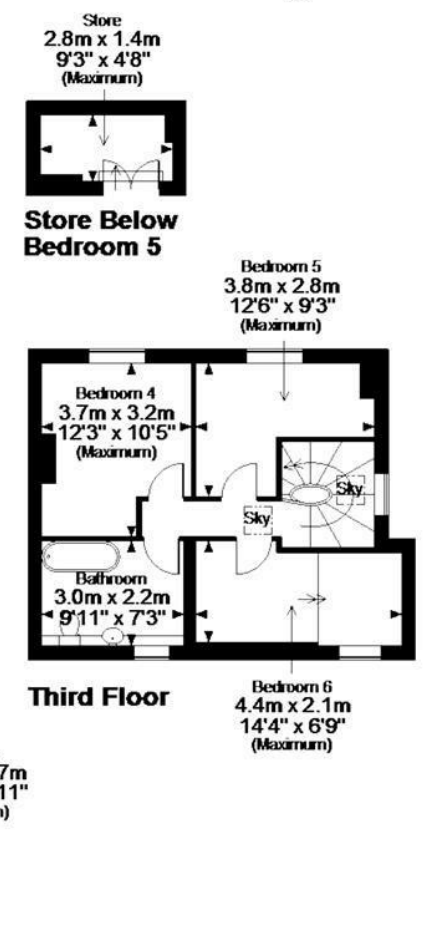
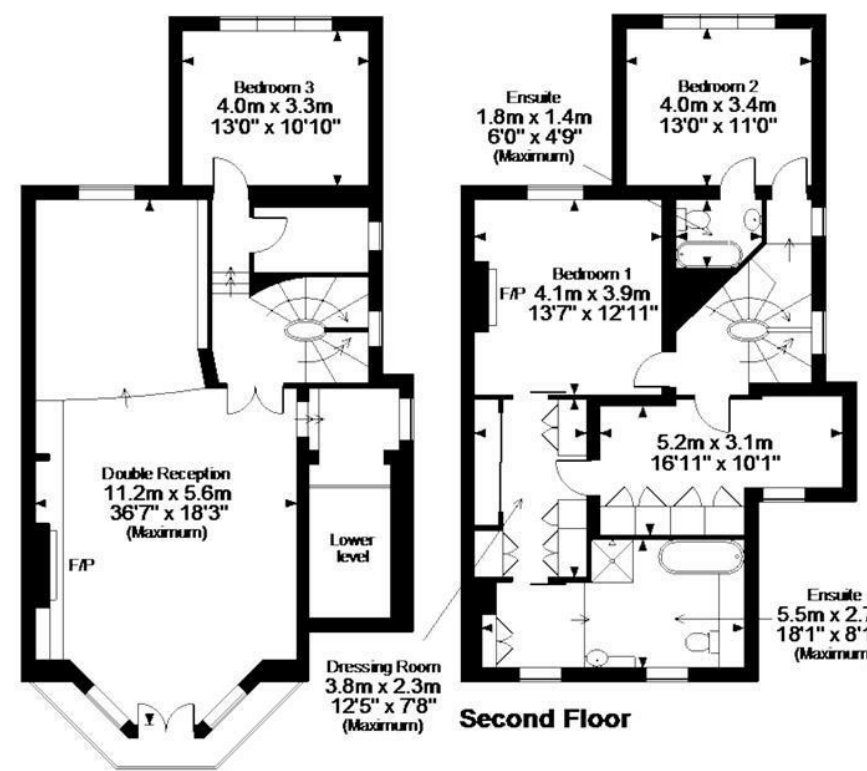
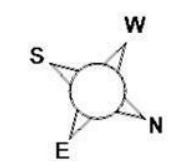








Hammersmith Grove, W6
Approximate Gross Internal Area
Main House = 3575 Sq Ft/333 Sq M
Stores = 153 Sq Ft/14 Sq M
Total = 3728 Sq Ft/347 Sq M



First Floor

FOR ILLUSTRATIVE PURPOSES ONLY - NOT TO SCALE

The position & size of doors, windows, appliances and other features are approximate only.

© ehouse. Unauthorised reproduction prohibited. Drawing ref. dig/8181800/OHW