

4 Wintry Mews

Epping

Welcome to Wintry Mews. A lovely two double bedroom apartment with open plan living, an ensuite shower room, parking and lift access - all set just a short stroll to Epping high street.
Council Tax band: E

Tenure: Share of Freehold

- Two double bedrooms
- Lift access
- Allocated parking
- Ensuite shower room
- Gated development overlooking Epping Forest
- Short walk to Epping high street



Hallway

Open Plan Kitchen / Dining / Living Area

17' 2" x 15' 4" (5.23m x 4.68m)

Bedroom

17' 9" x 15' 1" (5.42m x 4.59m)

Ensuite Shower Room

7' 6" x 4' 11" (2.29m x 1.49m)

Bathroom

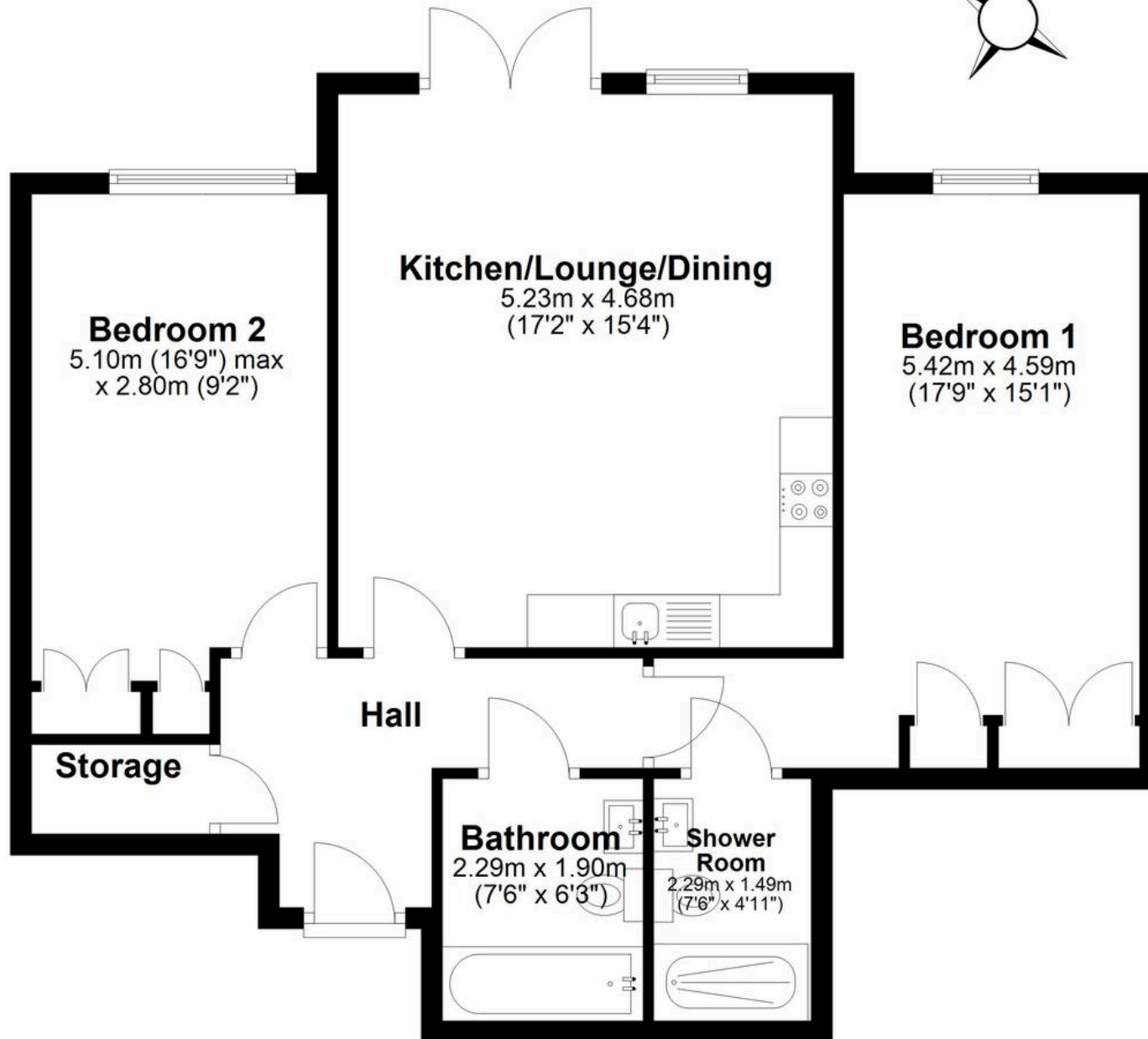
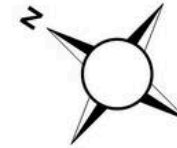
7' 6" x 6' 3" (2.29m x 1.90m)





Ground Floor

Approx. 73.0 sq. metres (785.8 sq. feet)



Total area: approx. 73.0 sq. metres (785.8 sq. feet)