



92 Caledonian Road | | London | NI 9DN

£3,250 Per month

ESON2
REAL ESTATE

Key features

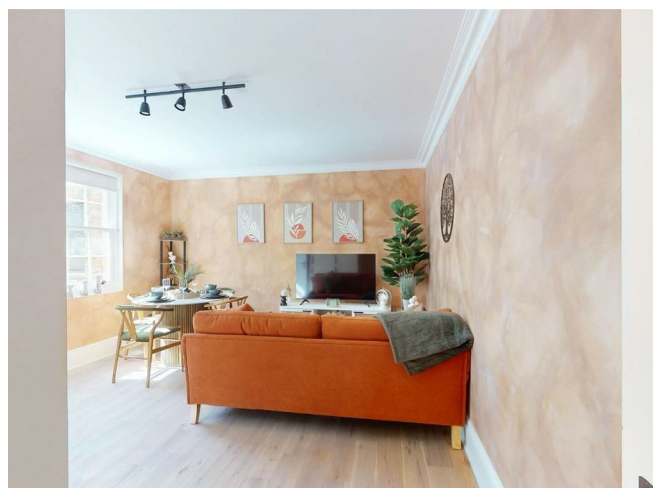
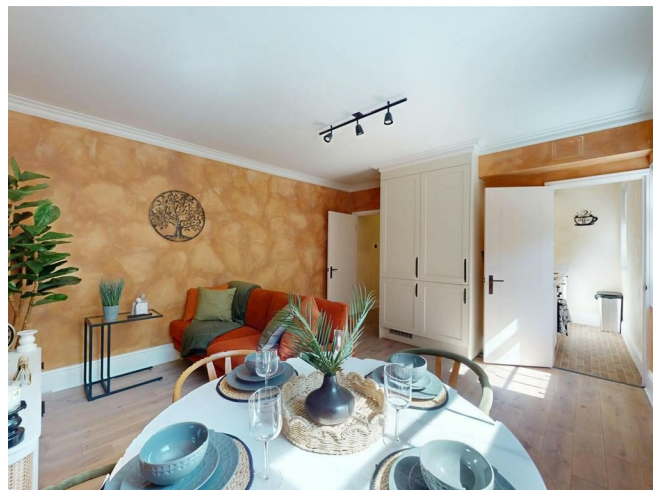
- Two bedroom flat
- Modern flat design
- Warm terracotta interiors
- Well-equipped galley kitchen
- Heart of vibrant Islington

Description

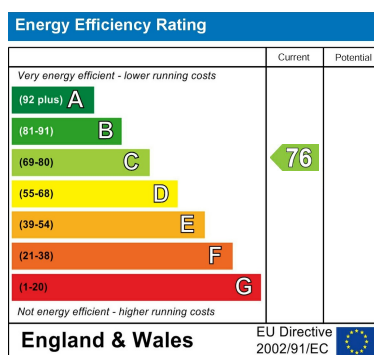
A 1-bedroom apartment in the heart of Islington, NI. Featuring warm terracotta living spaces, a designer bathroom with brushed gold fittings, and a well-equipped galley kitchen.

The double bedroom is calm and light-filled with a upholstered headboard, complemented by a second room perfect for guests or shares.

Directions







Council Tax Band D EPC Rating C



301 Michelin House 81 Fulham road
London
Greater London
SW3 6RD
07920 257649
fayeel@eson2.co.uk
www.eson2.co.uk