

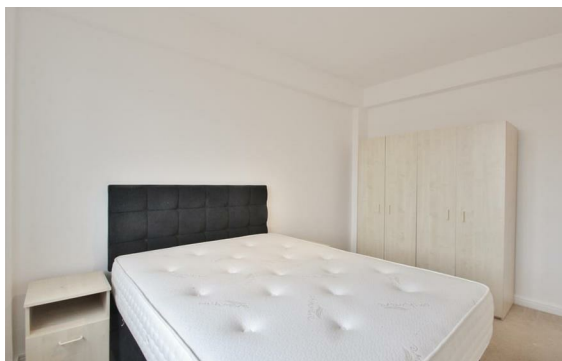


Gloucester Place, Marylebone, London, NW1

Rent £635 PCM

1 Bed | 1 Bath | 1 Reception

Please call us on 020 7724 2233 or email us info@newingtonstates.com to book a viewing.



NEWINGTON
— ESTATES —

60 Upper Montagu Street
London
W1H 1SN

020 7724 2233

info@newingtonestates.com

A well-presented one-bedroom apartment offering bright and practical living space in a sought-after Marylebone location. The property features a spacious reception room with a dining area, a fully fitted separate kitchen, a large double bedroom, and a modern bathroom. Carpet flooring, ample storage, and excellent natural light create a comfortable living environment.

Residents benefit from lift access and porter service. Ideally located close to Regent's Park, Baker Street Station, and Marylebone Station, with a wide range of cafés, restaurants, and local amenities nearby.

EPC Rating: C

Energy Efficiency Rating: C

Agents Note: Whilst every care has been taken to prepare these particulars, they are for guidance purposes only. All measurements are approximate and are for general guidance purposes only and whilst every care has been taken to ensure their accuracy, they should not be relied upon and potential buyers/tenants are advised to recheck the measurements.

<http://www.newingtonestates.com>