



Dobson Close

Leybourne Chase, West Malling, ME19 5SQ



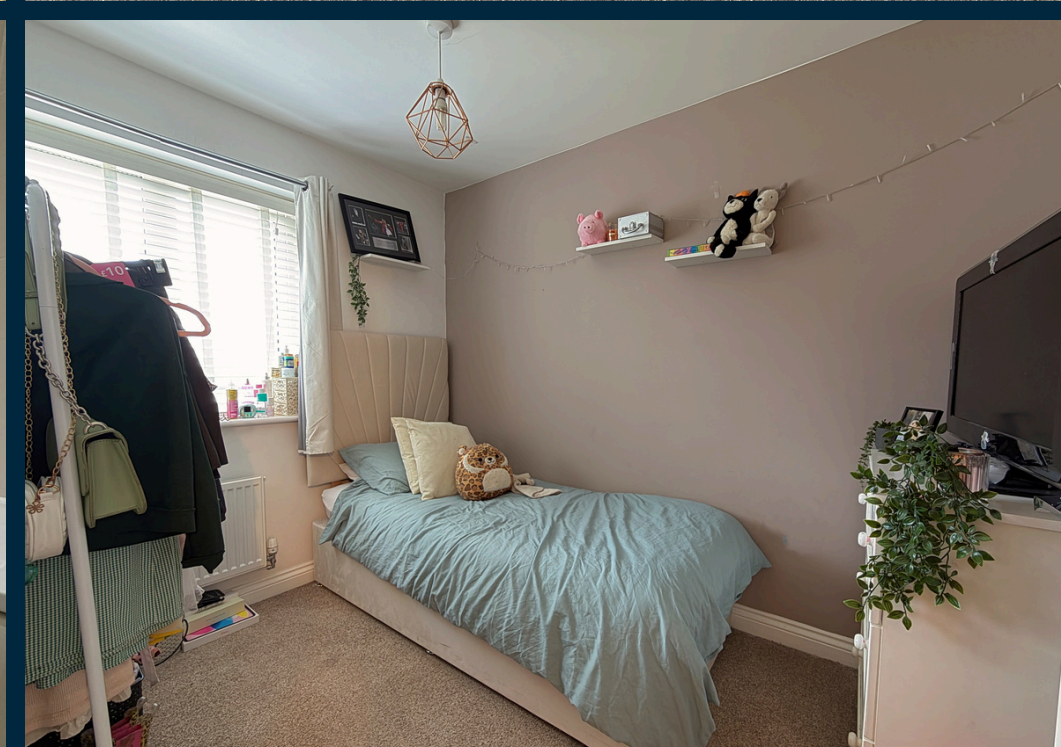


Built by Taylor Wimpey in 2018 as part of their final phase of the development, this semi detached home was built to the design known as 'The Croft'.

Whilst you enjoy the benefits from being on the edge of the development, you remain within walking distance from the wonderful facilities such as a trim trail, nearby football fields, community centre and village shop. The nearby sports pavilion hosts a local favourite among the residents - the mouth watering 'Average Doughs Bakery'. Pippins Pre-School and Valley Invicta Primary School cater for those with young children and with the thriving Market Town of West Malling with its mainline Rail Station, variety of shops, boutiques and pubs/restaurants just minutes away, there is nothing not to love about this location.

Spread across three floors, the accommodation to this family home is coming in at over 1,000sqft and will most certainly favour those buyers who are searching for a 'ready to move into' home. A modern fitted kitchen with forward facing views open greenery and a generous living room are accessed from the spacious hallway with two bedrooms and a bathroom to the first floor. Completing the accommodation, the master bedroom is a wonderful space on the second floor with a 10ft high, vaulted ceiling along with a private walk in shower room.

Heading outside, the garden wraps around the neighbouring garage to provide larger than expected outdoor space. The home also comes with a private car port located to the rear of the home with direct, private access to and from the garden.





Ground Floor

Entrance Hallway

Kitchen - 11'2 x 7'4 widening to 8'4

Lounge - 16'6 x 14

First Floor

Landing

Bedroom - 14 x 10

Bedroom - 9'6 x 6'10

Bathroom

Second Floor

Master Bedroom - 18'9 x 10'4

Ensuite Shower Room

Exterior

Spacious Rear Garden

Car Port & Driveway



01732 647009



@sreynoldsrealestate

