



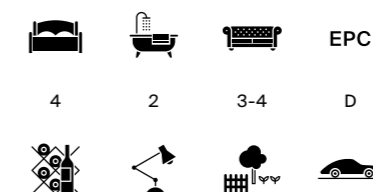
OLD HOME

High Street, Kintbury, Berkshire



A CHARMING, MODERNISED FAMILY HOME, IDEALLY POSITIONED IN A POPULAR VILLAGE BENEFITING FROM PRIVATE PARKING AND LOVELY REAR VIEWS

Old Home is a beautifully updated family home offering spacious living with stunning countryside views and off-road parking in a sought-after village location.



Local Authority: West Berkshire Council
Council Tax band: E
Tenure: Freehold

Services: Mains electricity, water and drainage. Gas heating.

Post Code: RG17 9TL

What3Words: ///crystals.exporters.matter

SITUATION

Old Home is situated in the heart of Kintbury, a popular village within a Conservation Area and an Area of Outstanding Natural Beauty. The house is within walking distance of the post office/shop, train station, doctor's surgery and primary school. There are also two public houses and a church within the village.

Communications are excellent with trains from Kintbury to Paddington taking approximately 60 minutes. The A34 and J13 of the M4 are approximately 5 and 8.5 miles respectively.

A wider range of shopping, leisure and recreational facilities are available in Hungerford and Newbury. In addition to the village school there are a number of well-regarded state and independent schools in the area including St Bartholomew's, Thorngrove, St Gabriels and Downe House.

Distances: Hungerford 3 miles, Newbury 8 miles, M4 J.13 8.5 miles, Kintbury to London Paddington 60 minutes (All distances and times are approximate).



THE PROPERTY

The entrance hall leads to an open-plan kitchen and dining area, opening into a bright snug with French doors to a seating area and cosy sitting room with a wood-burning stove. A Playroom with a log burner completes the ground floor. Bifold doors from the kitchen lead to the garden. Also on this floor are a back hall, WC and stairs leading down to a tanked cellar.

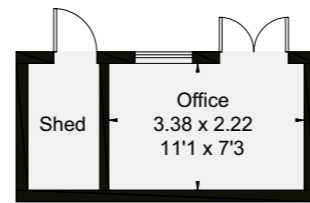
Upstairs, the principal bedroom features lovely field views and an en suite with bath, shower and double basin. There are three further double bedrooms and a family bathroom.



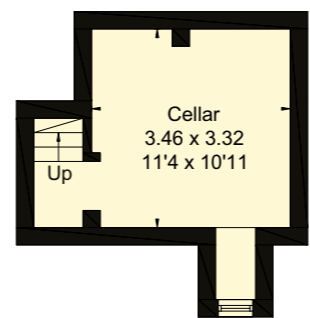
Mainly laid to lawn with mature flower beds, the garden includes a large patio, an office and a shed with storage heaters. It also boasts a gazebo seating area with far-reaching countryside views.

VIEWING

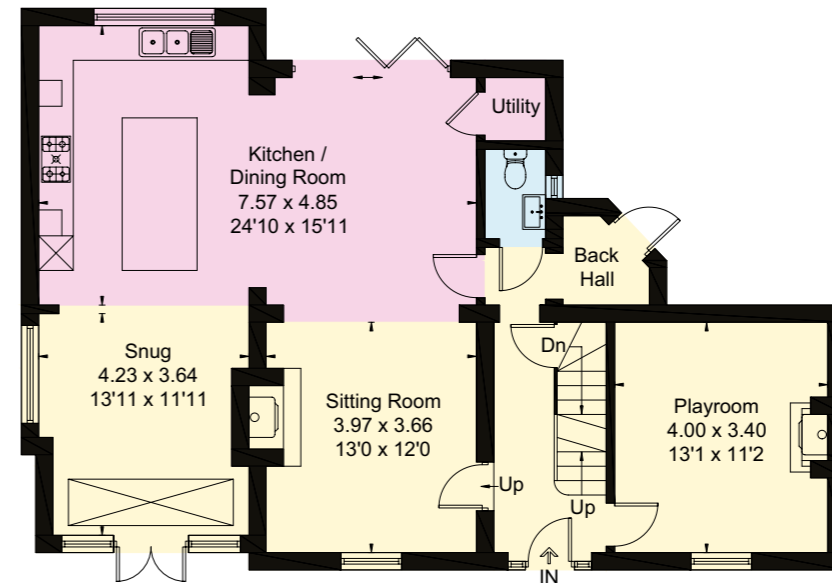
Viewing is only done by prior appointment with the agents.



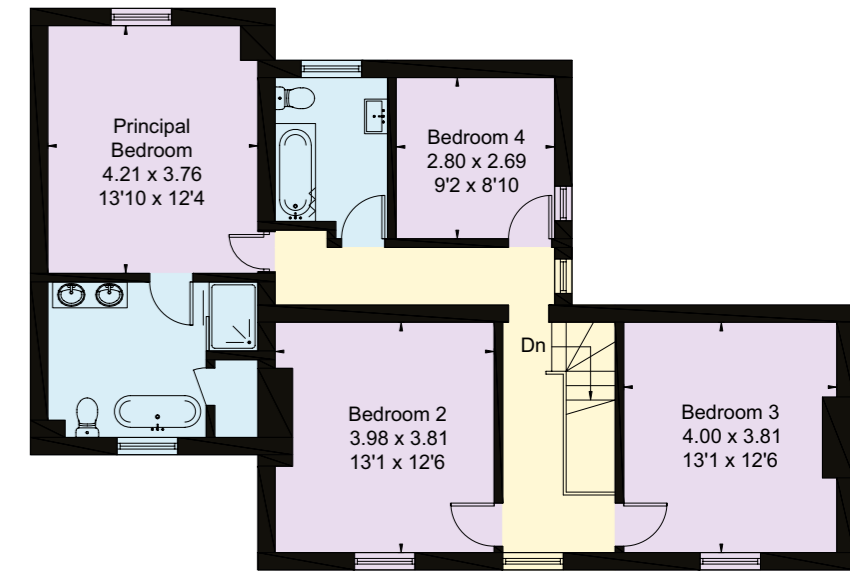
(Not Shown In Actual Location / Orientation)



Basement



Ground Floor



First Floor

- Reception
- Bedroom
- Bathroom
- Kitchen/Utility
- Storage
- Outside

Approximate Gross Internal Area = 198.9 sq m / 2141 sq ft
 Outbuildings = 7.5 sq m / 81 sq ft
 Total = 206.4 sq m / 2222 sq ft (Including Basement)

This plan is for layout guidance only. Not drawn to scale unless stated. Windows and door openings are approximate. Whilst every care is taken in the preparation of this plan, please check all dimensions, shapes and compass bearings before making any decisions reliant upon them.

I would be delighted
to tell you more.

Fiennes McCulloch
01488 688548
fiennes.mcculloch@knightfrank.com

Knight Frank Hungerford
Ramsbury House, 22 High Street
Hungerford, RG17 0NF

[knightfrank.co.uk](https://www.knightfrank.co.uk)

Your partners in property

1. Particulars: These particulars are not an offer or contract, nor part of one. You should not rely on statements given by Knight Frank in the particulars, by word of mouth or in writing ("information") as being factually accurate about the property, its condition or its value. Neither Knight Frank nor any joint agent has any authority to make any representations about the property, and accordingly any information given is entirely without responsibility on the part of Knight Frank. 2. Material Information: Please note that the material information is provided to Knight Frank by third parties and is provided here as a guide only. While Knight Frank has taken steps to verify this information, we advise you to confirm the details of any such material information prior to any offer being submitted. If we are informed of changes to this information by the seller or another third party, we will use reasonable endeavours to update this as soon as practical. 3. Photos, Videos etc: The photographs, property videos and virtual viewings etc. show only certain parts of the property as they appeared at the time they were taken. Areas, measurements and distances given are approximate only. 4. Regulations etc: Any reference to alterations to, or use of, any part of the property does not mean that any necessary planning, building regulations or other consent has been obtained. A buyer must find out by inspection or in other ways that these matters have been properly dealt with and that all information is correct. 5. Fixtures and fittings: A list of the fitted carpets, curtains, light fittings and other items fixed to the property which are included in the sale (or may be available by separate negotiation) will be provided by the Seller's Solicitors. 6. VAT: The VAT position relating to the property may change without notice. 7. To find out how we process Personal Data, please refer to our Group Privacy Statement and other notices at <https://www.knightfrank.com/legals/privacy-statement>.

Particulars dated April 2026. Photographs and videos dated June 2025 and April 2026. Reference: FMHNG012434229. All information is correct at the time of going to print. Knight Frank is the trading name of Knight Frank LLP. Knight Frank LLP is a limited liability partnership registered in England and Wales with registered number OC305934. Our registered office is at 55 Baker Street, London W1U 8AN. We use the term 'partner' to refer to a member of Knight Frank LLP, or an employee or consultant. A list of members names of Knight Frank LLP may be inspected at our registered office. If you do not want us to contact you further about our services then please contact us by either calling 020 3544 0692, email to marketing.help@knightfrank.com or post to our UK Residential Marketing Manager at our registered office (above) providing your name and address.