



WARREN HOUSE, W14

£2,350,000

Stunning Penthouse Apartment

Three Bedrooms

Sixth Floor

Secure Parking Space

Lift and Porter

Unrivalled Location

@marshandparsons
marshandparsons.co.uk

MARSH &
PARSONS

ABOUT THE PROPERTY

A stunning three-bedroom penthouse apartment located on the sixth floor (with lift and portorage) of this very smart and popular modern development with secure underground parking.

Warren House is close to the amenities of West Kensington and Earls Court, while the shops, bars and restaurants of Kensington High Street and green spaces of Holland Park are also close by. There are excellent local transport links to the A4/M4 while Kensington Olympia Station (British Rail and District Line) and Earl's Court (Piccadilly and District Lines) are nearby.





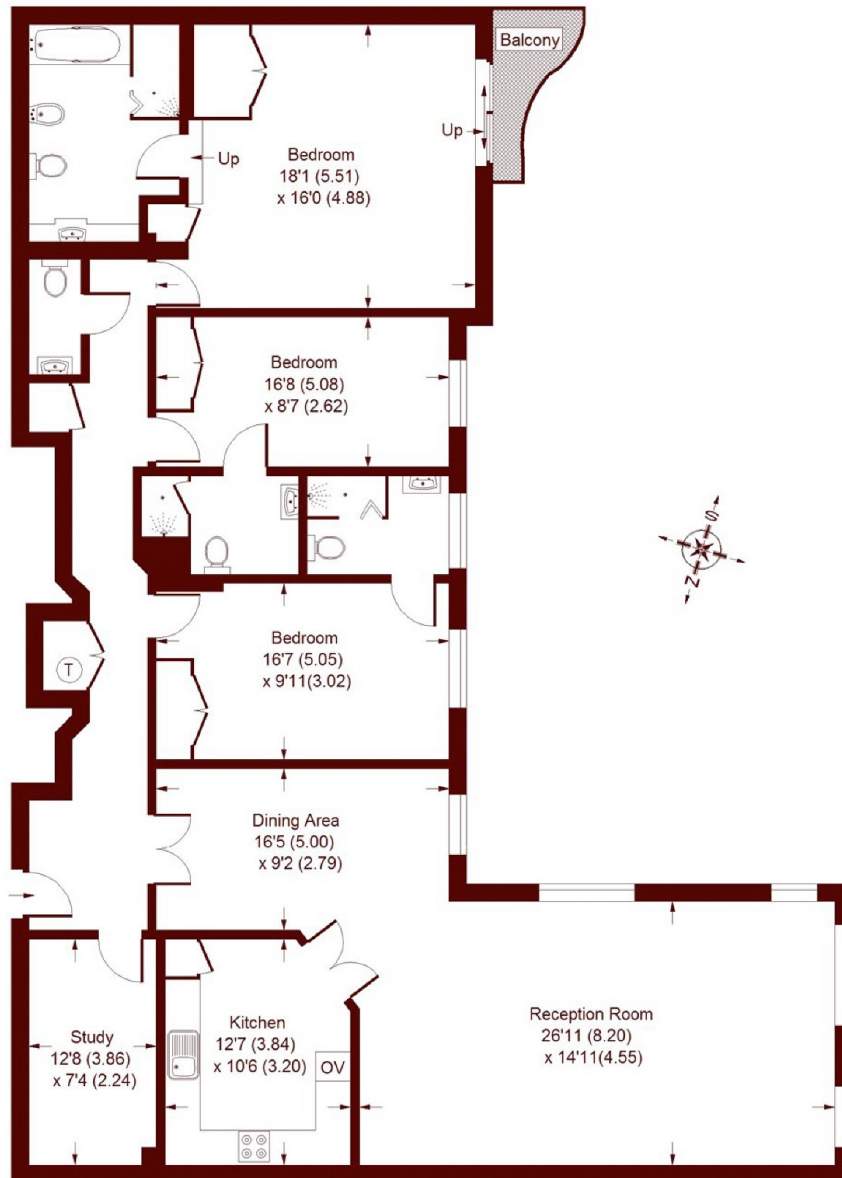




STEP INSIDE WARREN HOUSE

Warren House, W14

APPROX. GROSS INTERNAL FLOOR AREA
1837 SQFT / 170.7 SQM



SIXTH FLOOR

Whilst every attempt has been made to ensure the accuracy of the floor plan, measurements are approximate and not to scale.
No guarantee is given on the total square footage of the property quoted on the plan. Figures given are for guidance.
Plan is for illustration purposes only.

Kensington
020 7368 4450

Energy Rating: B We aim to make our particulars both accurate and reliable. However, they are not guaranteed; nor do they form part of an offer or contract. If you require clarification on any points then please contact us, especially if you're traveling some distance to view. Please note that appliances and heating systems have not been tested and therefore no warranties can be given as to their good working order

MARSH &
PARSONS