



WHITEHORNES

Buy. Sell. Let. Relax!

0114 268 8533
info@whitehorses.com
www.whitehorses.com

35 Westwick Crescent, Greenhill

Sheffield

Guide Price **£525,000**

35 Westwick Crescent

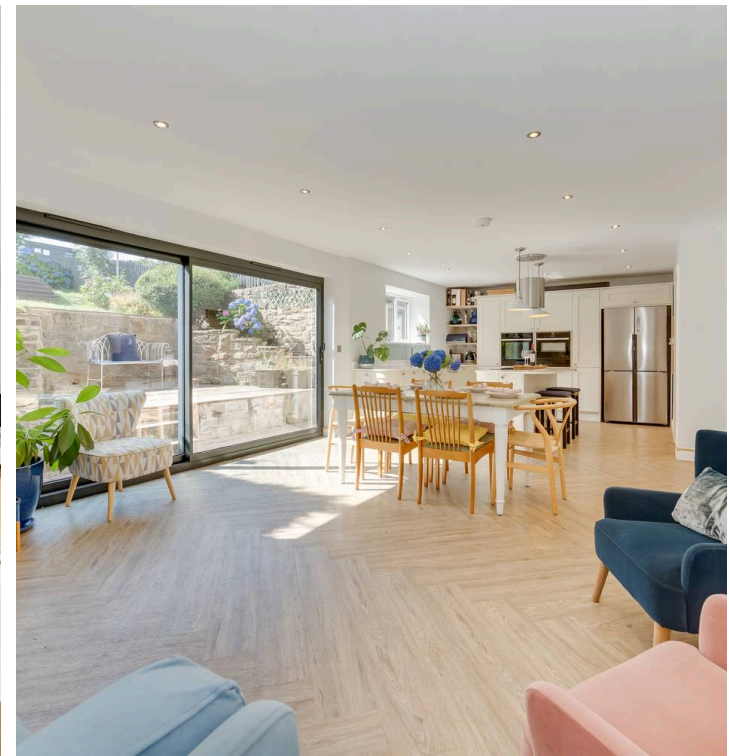
Greenhill, Sheffield

Early viewing is advised for this imposing and modern four bedroom, two bathroom detached family home. Being located in the heart of the ever popular suburb of Greenhill with not only a wealth of local amenities but reputable local schools and expansive green spaces all within easy walking distance. Having been finished throughout to the very highest of standards with fantastic and light open plan living that flows effortlessly into the large and well enclosed south facing garden. The property is offered for sale with no onward chain and briefly consists of entrance hallway, downstairs WC, lounge, well appointed kitchen/dining room, downstairs office, four bedrooms (one with en-suite) and family bathroom. Outside is the large garden, garage, and off road parking to the front.

Council Tax band: D

Tenure: Leasehold

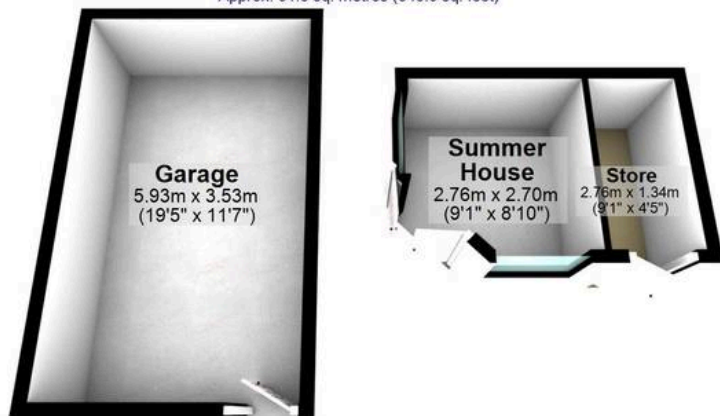
- FOUR BEDROOM DETACHED PROPERTY
- GARAGE AND SUMMER HOUSE BOTH WITH MAINS POWER
- SITUATED IN THE HEART OF ULTRA POPULAR GREENHILL
- LIGHT AND BRIGHT ACCOMODATION TOTTALLING AN IMPRESSIVE 2,070 SQ FT
- EXCELLENT LOCAL SCHOOL CATCHMENTS AVAILABLE
- BEAUTIFUL REAR, PRIVATE GARDEN AND SUMMER HOUSE WITH MAINS POWER
- PERFECT FOR THE FAMILY MARKET WITH VIEWING ESSENTIAL
- LEASEHOLD PROPERTY WITH 707 YEARS REMAINING AND £9 P/A FROUND RENT, AND COUNCIL TAX BAND D £2,274 P/A
- CLOSE TO THE OPEN WOODS AND BEAUCHIEF ABBEY





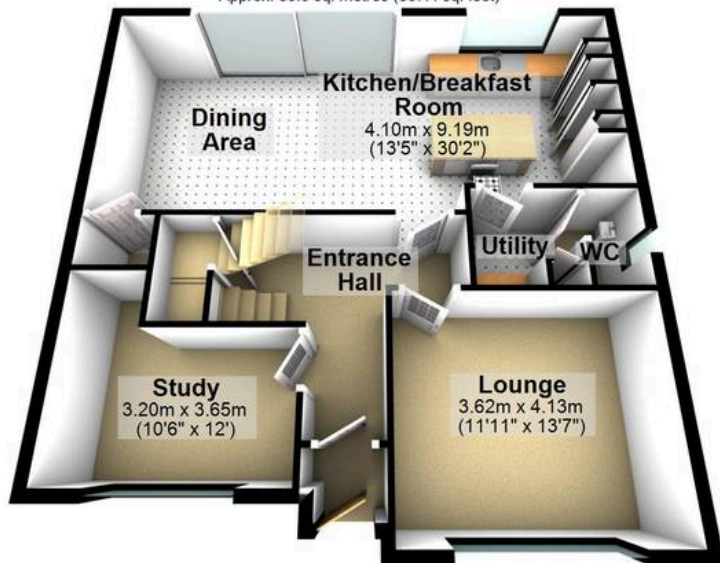
Outbuildings

Approx. 31.6 sq. metres (340.6 sq. feet)



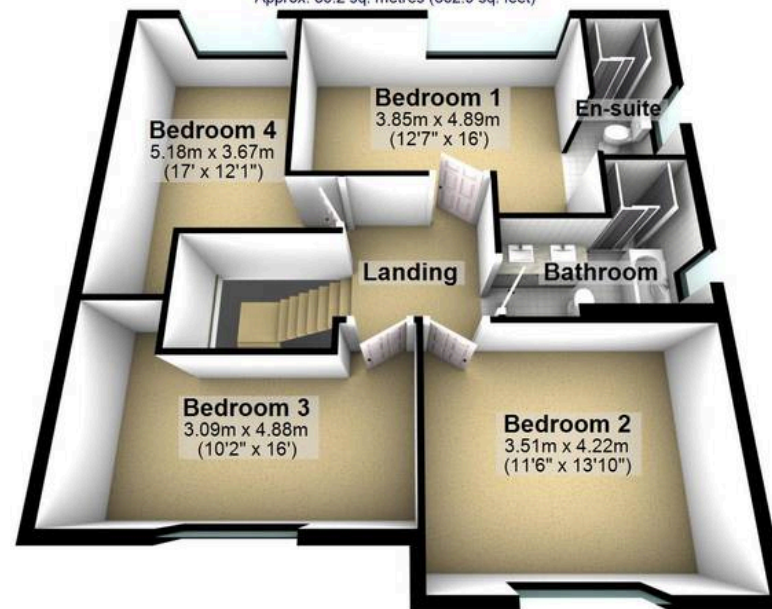
Ground Floor

Approx. 80.6 sq. metres (867.4 sq. feet)



First Floor

Approx. 80.2 sq. metres (862.9 sq. feet)



Total area: approx. 192.4 sq. metres (2070.8 sq. feet)

All measurements are approximate
Plan produced using PlanUp.