



Guide Price
£325,000

Freehold

2x  1x  1x 

**Barnsnap Close,
Horsham, West Sussex,
RH12**

OVER 60?

Secure this property
for up to **59% less!**

cubitt & west
Helping you move forwards



Main features

- With no onward chain the property is ready to move into
- Quiet and peaceful cul de sac location
- A moments walk from local shops and bus route
- Convenience of garage en-bloc
- Large lounge and good size bedrooms

Accommodation

GROUND FLOOR

Entrance Porch
 Lounge: 18'10 x 12'5 (5.74m x 3.79m)
 Kitchen: 12'5 x 8'1 (3.79m x 2.47m)

FIRST FLOOR

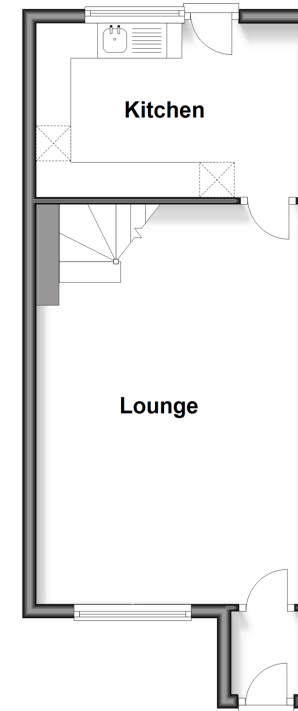
Landing
 Bedroom 1: 12'5 x 10'5 (3.79m x 3.18m)
 Bedroom 2: 12'5 x 8'2 (3.79m x 2.49m)
 Bathroom: 8'6 x 4'9 (2.59m x 1.45m)

OUTSIDE

Rear Garden
 Garage En Bloc

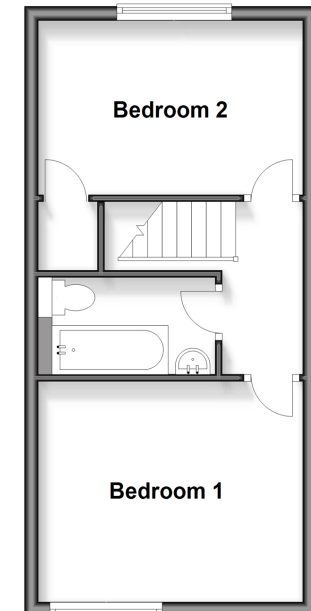
Ground Floor

Approx. 33.1 sq. metres (356.6 sq. feet)



First Floor

Approx. 31.8 sq. metres (342.6 sq. feet)



Call Horsham - 01403 269268 ■ cubittandwest.co.uk

■ Legal advice should be taken to verify fixtures/fittings, planning, alterations and/or lease details
 ■ Through a Homewise Home For Life Plan people aged 60+ can secure this property for up to 59% less, by purchasing a Lifetime Lease

■ Appliances & services are untested, dimensions are approximate and floor plans are not to scale



20908721/20260228/SEH/CB