



GREENWICH QUAY, SE8

£2,400 per month

Maisonette
Two bedrooms
Separate kitchen
Spiral staircase
River front
Energy rating: c

@marshandparsons
marshandparsons.co.uk

MARSH &
PARSONS

ABOUT THE PROPERTY

A modern split-level maisonette, beautifully positioned on the edge of Deptford Creek and the River Thames, offering picturesque riverside views.

Greenwich park and Greenwich centre are within walking distance from the property. Greenwich Quay benefits from travel into London with two DLR stations (Cutty Sark and Greenwich) along with Greenwich mainline train station.







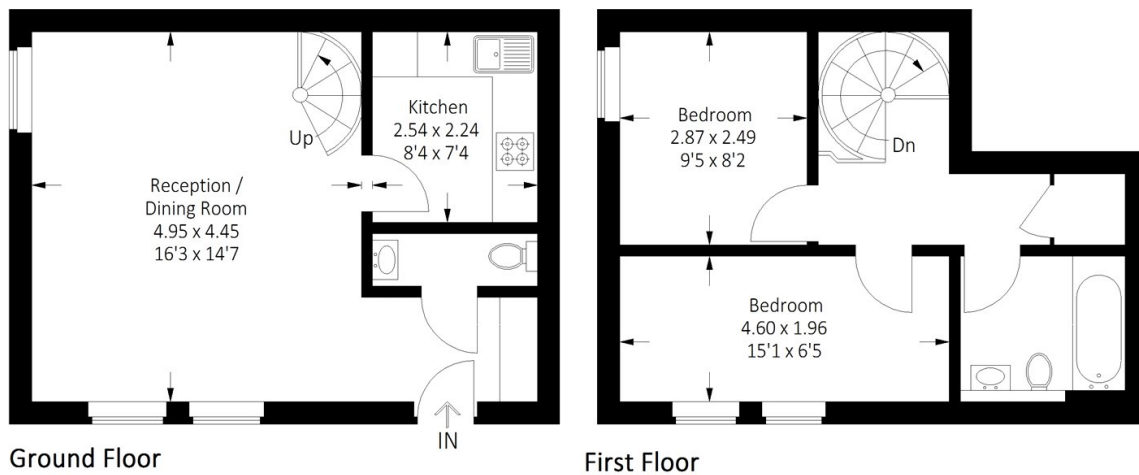
FURTHER DETAILS

This unique property offers a private, separate entrance directly on the riverfront and features a spacious reception room and separate kitchen. A characterful spiral staircase adds a striking focal point, leading to the upper level.

Both bedrooms are generously sized doubles, and the main bathroom is modern, complete with a bathtub and overhead shower. Additionally, there is a modern separate WC located on the ground floor for added convenience.



STEP INSIDE GREENWICH QUAY



Approximate Gross Internal Area = 62.5 sq m / 673 sq ft

Greenwich
020 8815 2230

Energy Rating: C We aim to make our particulars both accurate and reliable. However, they are not guaranteed; nor do they form part of an offer or contract. If you require clarification on any points then please contact us, especially if you're traveling some distance to view. Please note that appliances and heating systems have not been tested and therefore no warranties can be given as to their good working order

MARSH &
PARSONS