



COROMANDEL

GRETTON ROAD, GOTHERINGTON, CHELTENHAM, GL52 9EP

A delightful four bedroom detached house built in the 90's which has undergone an impressive refurbishment and now offers a contemporary layout with four bedrooms, 2 spacious reception rooms and a high specification garden office.

LOCATION:

what3words:://stoops.vowed.ounce

- Detached house
- Four bedrooms
- Large kitchen
- Triple aspect sitting room
- Bedroom with en suite shower
- 3 generous bedrooms
- Family bathroom
- High specification garden office
- Garage and off road parking
- Gas central heating

readmaurice 

SALES & LETTINGS

Cheltenham Office

48 Andover Road, Cheltenham, Gloucestershire, GL50 2TL

T: 01242 241122

E: post@readmaurice.co.uk





THE PROPERTY

Coromandel is a lovely family home with a contemporary twist. Situated in the heart of this thriving active village it was built in the late 1990's of an individual architectural design. On entering the property the hall leads through to a striking plywood kitchen proving an array of fitted base and wall units, integrated appliances and a Quooker tap. A very social space with an island with space for four and a dining table. Double doors lead out to the courtyard.

The sitting room is a lovely space with a triple aspect and afforded plenty of natural light. It also has an inset wood burner. Two sets of double doors provide access to the garden. There is also a cloakroom and utility which leads to the integral garage which could easily provide the footprint for additional accommodation if required.

Upstairs a spacious landing has a unique set of triangular windows. The master bedroom has fitted storage on two sides and an en suite shower room. The remaining bedrooms are all doubles and there is a four piece bathroom.

OUTSIDE

The property is set on a generous plot with access to sides. A paved terrace provides a place to entertain. The upper elevated garden is fully enclosed and has a lawned area.

GARDEN ROOM

A really well designed garden room which could be used for a number of uses (presently a home office solution). It is clad, insulated and heated and has a similar style to the kitchen with exposed wood finishes.

AGENTS NOTE

The property has double glazing, gas central heating and in parts electric underfloor heating.

The village of Gotherington is a small, historic village in Gloucestershire, England, located just north of Bishops Cleeve and roughly six miles from Cheltenham. Situated within the Cotswolds Area of Outstanding Natural Beauty, it is known for its quiet, rural character and active community life. It has a primary school, village stores and a public house.

PROPERTY INFORMATION

Council: Tewkesbury

Council Tax band: F

Area: 1948 Sq. ft' / 181 Sq. m

Tenure: Freehold

EPC: C

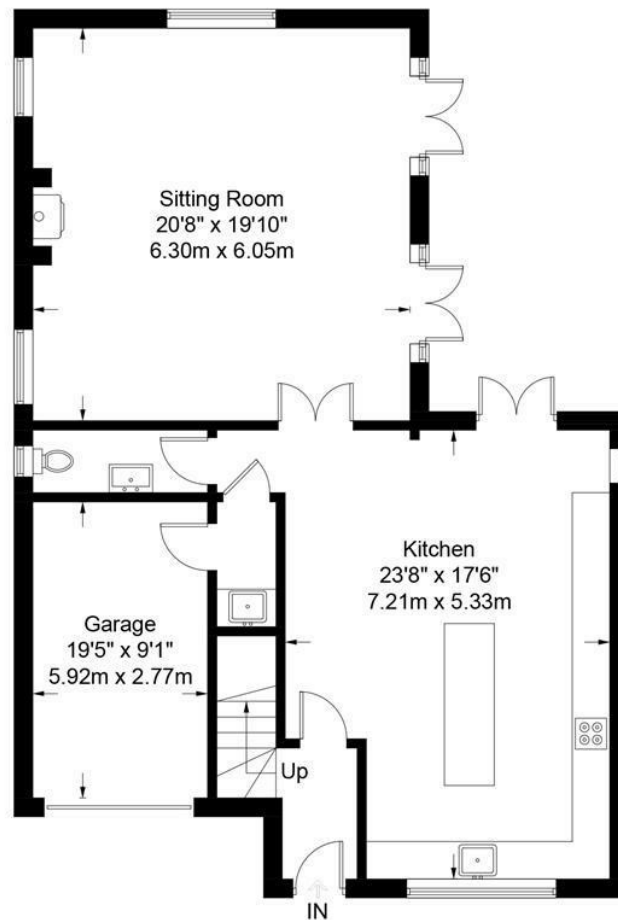
Services:

All main services are connected

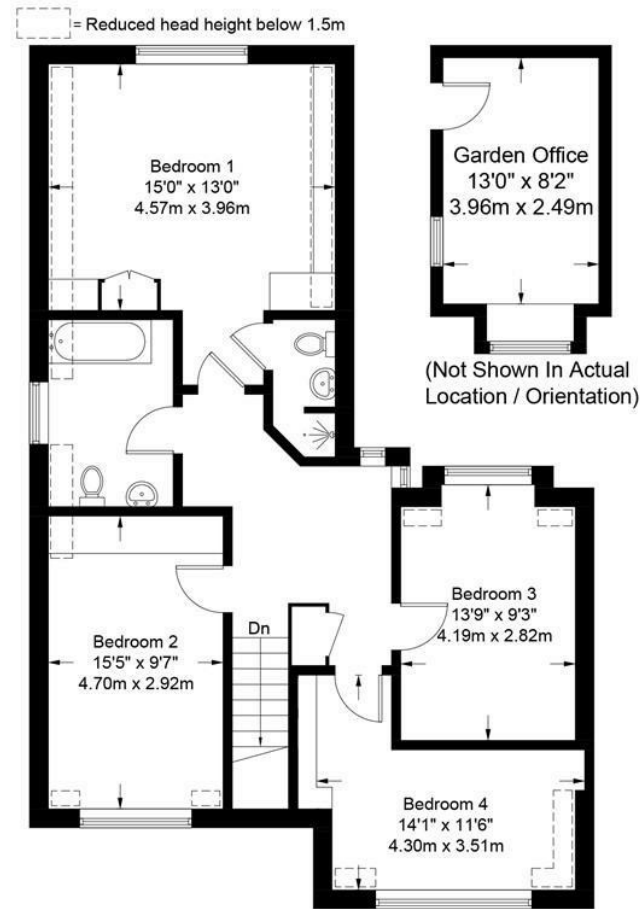








GROUND FLOOR



FIRST FLOOR

Approximate Gross Internal Area = 1948 sq ft / 181.0 sq m

Garden Office = 115 sq ft / 10.7 sq m

Total = 2063 sq ft / 191.7 sq m

Illustration for identification purposes only, measurements are approximate and are not to scale.

Please check all details before making any decisions reliant upon them.

Copyright Read Maurice. (ID1273260)



These particulars, whilst believed to be accurate are set out as a general outline only for guidance and do not constitute any part of an offer or contract. Intending purchasers should not rely on them as statements or representation of fact, but must satisfy themselves by inspection or otherwise as to their accuracy. We have not carried out a detailed survey nor tested the services, appliances and specific fittings. Room sizes should not be relied upon for carpets and furnishings. The measurements given are approximate. No person in this firms employment has the authority to make or give any representation or warranty in respect of the property. PRN: 19642506

