

Monton Office

0161 789 8383
222 Monton Road, Monton
M30 9LJ
@homeinmonton



75a Ringlow Park Road Swinton Swinton M27 0HA
£1,100 Per calendar month

AVAILABLE EARLY JUNE! HOME ESTATE AGENTS are delighted to offer for rent this modern, two double bedroom end terrace property. Having been recently re-decorated and updated throughout the property comprises lounge, open plan kitchen/diner, shaped landing, two double bedrooms and fitted bathroom suite. The property is double glazed and gas central heated. Externally there is a garden to the front and parking for two vehicles to the side. Located in a popular residential position! Available Early June and offered on an unfurnished basis! Call HOME On 01617898383 to view!

- MODERN END TERRACE PROPERTY
- Open plan kitchen/diner
- Two double bedrooms
- FAB CONDITION!
- Popular Residential Location
- Modern fitted kitchen
- Garden to the front
- Lounge
- Shaped landing
- Two parking spaces available



LOCAL EXPERTS THAT GET YOU MOVING

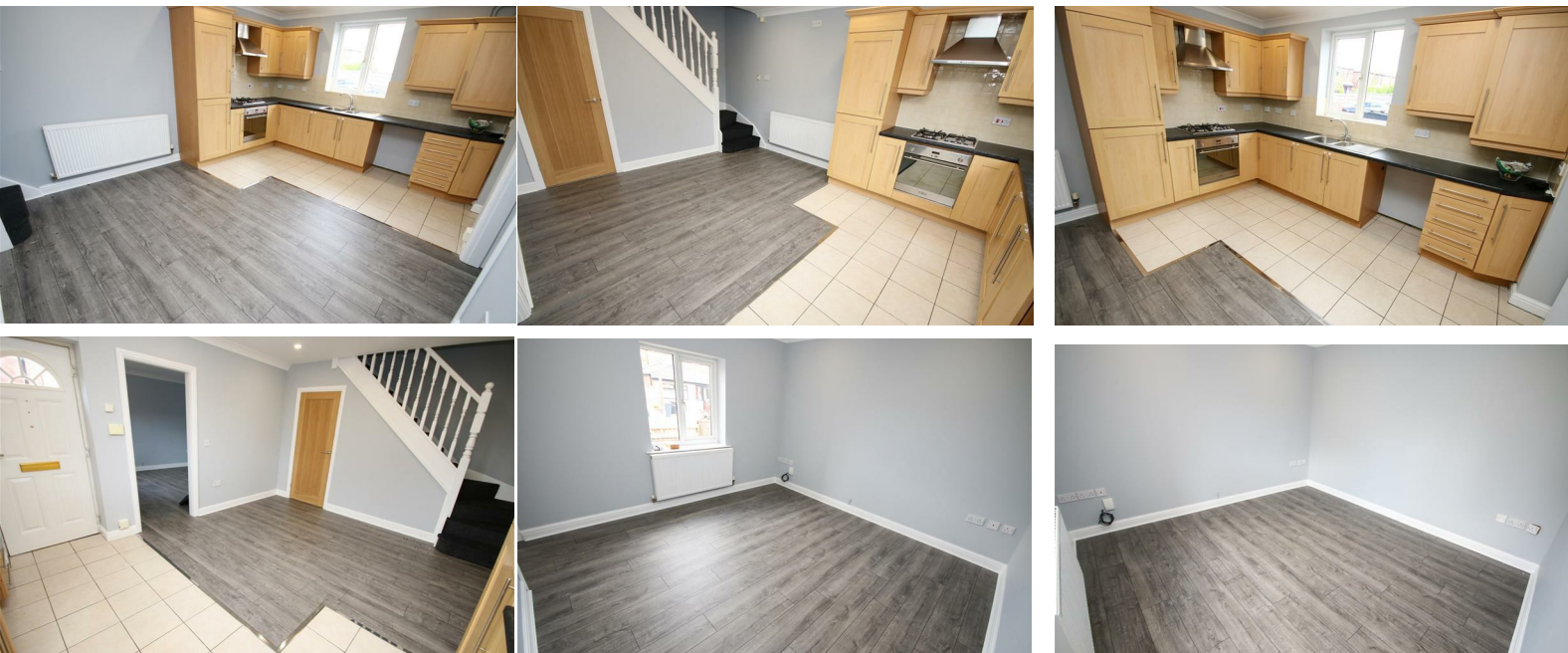
 www.homestateagents.com

TENANCY INFO

Band Year Charge

B 2026 to 2027 £2,017.90

EPC RATING - D



LOCAL EXPERTS THAT GET YOU MOVING

 www.homestateagents.com



Registered Address Vantage House, East Terrace Business Park, Euxton Lane, Euxton PR7 6TB - England
Company Registration numbers Monton - 9262084 Urmston - 04331861 Stretford - 08259553




LOCAL EXPERTS THAT GET YOU MOVING

 www.homeestateagents.com



Registered Address Vantage House, East Terrace Business Park, Euxton Lane, Euxton PR7 6TB - England
Company Registration numbers Monton - 9262084 Urmston - 04331861 Stretford - 08259553

Energy Efficiency Rating		
	Current	Potential
<i>Very energy efficient - lower running costs</i>		
(92 plus) A		
(81-91) B		
(69-80) C		
(55-68) D		
(39-54) E		
(21-38) F		
(1-20) G		
<i>Not energy efficient - higher running costs</i>		
England & Wales	EU Directive 2002/91/EC	

Environmental Impact (CO ₂) Rating		
	Current	Potential
<i>Very environmentally friendly - lower CO2 emissions</i>		
(92 plus) A		
(81-91) B		
(69-80) C		
(55-68) D		
(39-54) E		
(21-38) F		
(1-20) G		
<i>Not environmentally friendly - higher CO2 emissions</i>		
England & Wales	EU Directive 2002/91/EC	



LOCAL EXPERTS THAT GET YOU MOVING

 www.homestateagents.com



Registered Address Vantage House, East Terrace Business Park, Euxton Lane, Euxton PR7 6TB - England
 Company Registration numbers Monton - 9262084 Urmston - 04331861 Stretford - 08259553