



Connells

Hazel Copse
Chippenham



Property Description

Situated in a quiet and desirable cul-de-sac, 7 Hazel Copse is an impressive five-bedroom detached property offering generous living space, ideal for growing families or those needing flexible accommodation. The property benefits from triple glazing throughout.

The ground floor features a welcoming entrance hall leading to a spacious living room, perfect for relaxing or entertaining. A separate formal dining room and study provide additional versatility for home working and family meals. The modern fitted kitchen offers ample storage and worktop space and opens onto the study. A further reception/bedroom six, a utility room and downstairs WC complete the ground floor accommodation.

Upstairs, the property benefits from five well-proportioned bedrooms, including a principal bedroom with en-suite shower room. The remaining bedrooms are served by a family bathroom, making the layout practical and comfortable for family life.

Externally, the home enjoys a private rear garden, ideal for outdoor dining and children's play. To the front, there is a driveway providing off-road parking, complemented by an integral garage.

Located within easy reach of local amenities, schools, and transport links, 7 Hazel Copse combines spacious accommodation with a peaceful residential setting.

Ground Floor

Entrance Porch

Door to front. Entrance door leading through to Hallway.

Hallway

Window to front. Stairs to First Floor. Under stairs storage cupboard.

Lounge

French doors to rear garden. Feature fireplace. Wooden flooring.

Dining Room

Window to front. Wooden flooring.

Kitchen

Window to rear. Fitted with a matching range of base and wall units with complementary work surfaces over with inset sink and drainer. Built in oven and hob. Integrated dishwasher. Opening through to Study.

Utility Room

Window to side. Base unit with inset sink and drainer. Work tops. Plumbing for washing machine.

Study

French doors to rear.

Reception/Bedroom Six

Window to front.

Cloakroom

Suite comprising low level WC and wash hand basin.

First Floor

Bedroom One

Window to rear. Built in wardrobes. Door to Ensuite.

Ensuite

Suite comprising low level WC, wash hand basin and shower cubicle. Window to side.

Bedroom Two

Window to front.

Bedroom Three

Window to rear.

Bedroom Four

Window to front.

Bedroom Five

Window to rear. Built in cupboard.

Bathroom

Suite comprising

Outside

Front

Lawn area with mature shrub border. Driveway parking leading to Garage.

Integral Garage

With double doors.

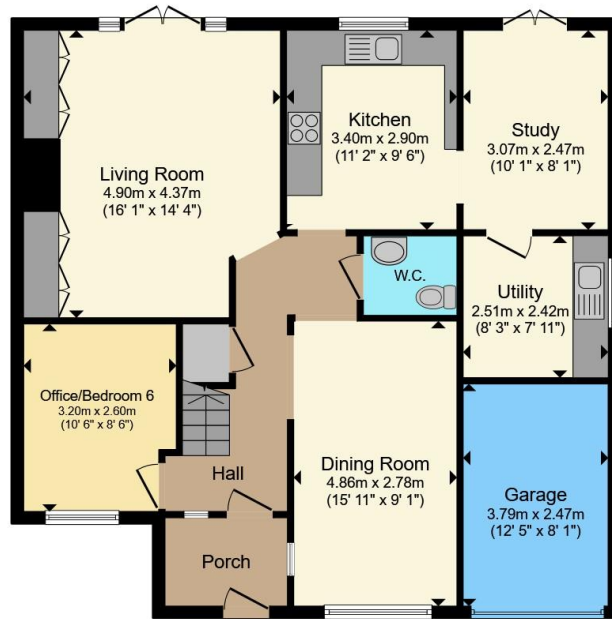
Rear Garden

Fully enclosed with patio area, lawn area and mature shrub borders.









Ground Floor



First Floor

Total floor area 174.8 m² (1,881 sq.ft.) approx

This floor plan is for illustrative purposes only. It is not drawn to scale. Any measurements, floor areas (including any total floor area), openings and orientation are approximate. No details are guaranteed, they cannot be relied upon for any purpose and they do not form part of any agreement. No liability is taken for any error, omission or misstatement. A party must rely upon its own inspection(s). Powered by www.propertybox.io



To view this property please contact Connells on

T 01249 652 476

E chippenham@connells.co.uk

59 Market Place
CHIPPENHAM SN15 3HL

EPC Rating: C Council Tax Band: E

Tenure: Freehold

view this property online connells.co.uk/Property/CHM306577



1. MONEY LAUNDERING REGULATIONS Intending purchasers will be asked to produce identification documentation at a later stage and we would ask for your co-operation in order that there will be no delay in agreeing the sale. 2. These particulars do not constitute part or all of an offer or contract. 3. The measurements indicated are supplied for guidance only and as such must be considered incorrect. Potential buyers are advised to recheck measurements before committing to any expense. 4. We have not tested any apparatus, equipment, fixtures, fittings or services and it is in the buyers interest to check the working condition of any appliances.

Connells Residential is registered in England and Wales under company number 1489613, Registered Office is Cumbria House, 16-20 Hockliffe Street, Leighton Buzzard, Bedfordshire, LU7 1GN. VAT Registration Number is 500 2481 05.

See all our properties at www.connells.co.uk | www.rightmove.co.uk | www.zoopla.co.uk

Property Ref: CHM306577 - 0004