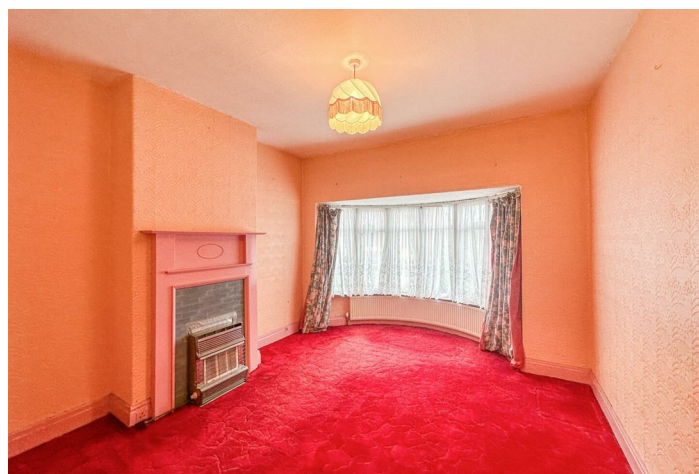




## Morland Road , Manchester, M16 9PA

- 3 spacious bedrooms
- 2 cosy reception rooms
- Located on Morland Road
- Easy access to transport links
- Viewing recommended
- 2 modern bathrooms
- Semi-detached house
- Close to Manchester amenities
  - Ideal for families
- Great investment opportunity



Local Authority  
Council Tax Band **C**  
EPC Rating **D**



#### Smartsale4u Office

Suite 331 Kemp House, 152-160 City  
Road, London, EC1V 2NX

#### Contact

0204 572 9091  
info@smartsale4u.co.uk  
smartsale4u.co.uk

Agents Note: Whilst every care has been taken to prepare these particulars, they are for guidance purposes only. All measurements are approximate and for general guidance purposes only and whilst every care has been taken to ensure accuracy, they should not be relied upon and potential buyers/tenants are advised to recheck the measurements.