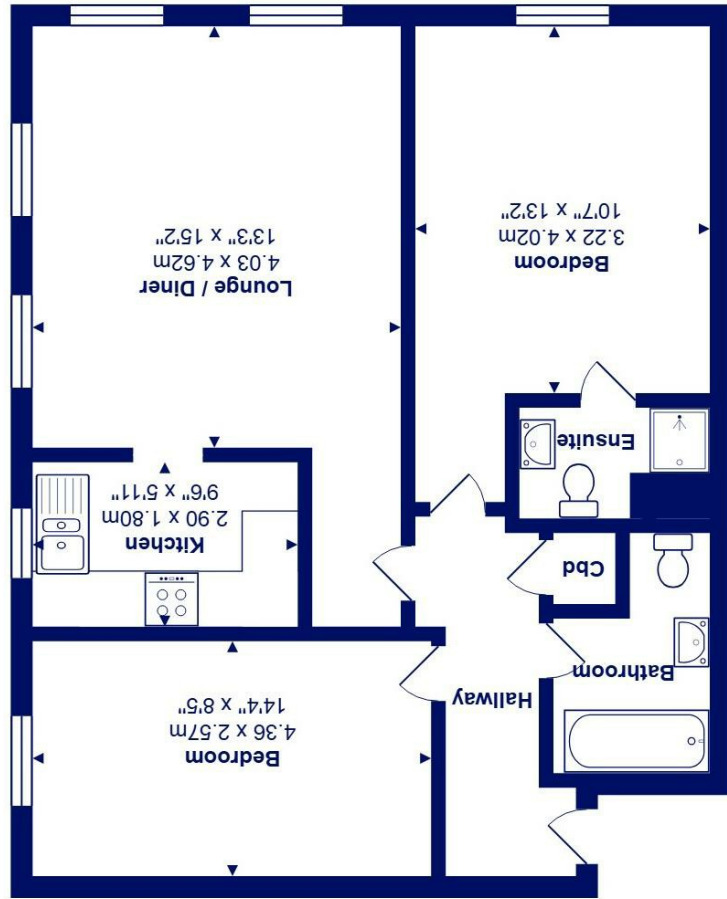




Total Area: 67.3 m<sup>2</sup> ... 724 ft<sup>2</sup>  
All measurements are approximate and for display purposes only



*12a Liberty Court, Dragoon Way, BH23 2TZ* *£199,950*

**Mitchells**  
1963 — TODAY

**\*\* NO CHAIN \*\*** A well-presented ground floor apartment offering approximately 770 sq ft of accommodation, set within an attractive modern brick-built development. The property features a spacious lounge, separate kitchen, two double bedrooms, family bathroom and ensuite. No chain

- Ground floor leasehold apartment of approximately 770 sqft
- Two double bedrooms
- Spacious lounge with lots of natural light
- Kitchen with some integrated appliances
- Family bathroom
- En-suite shower room
- Entrance hall with phone entry system
- Allocated parking space
- 999 years remaining, service charge £1,934.00 pa
- Convenient location, within walking distance of Christchurch Town Centre

EPC Rating Band: C  
Council Tax Band: C

