



**Eastview Benton Green Lane, Berkswell**  
**£475,000**

**bayzos.**  
THE MOST HELPFUL ESTATE AGENT



## Eastview Benton Green Lane

Berkswell, Coventry

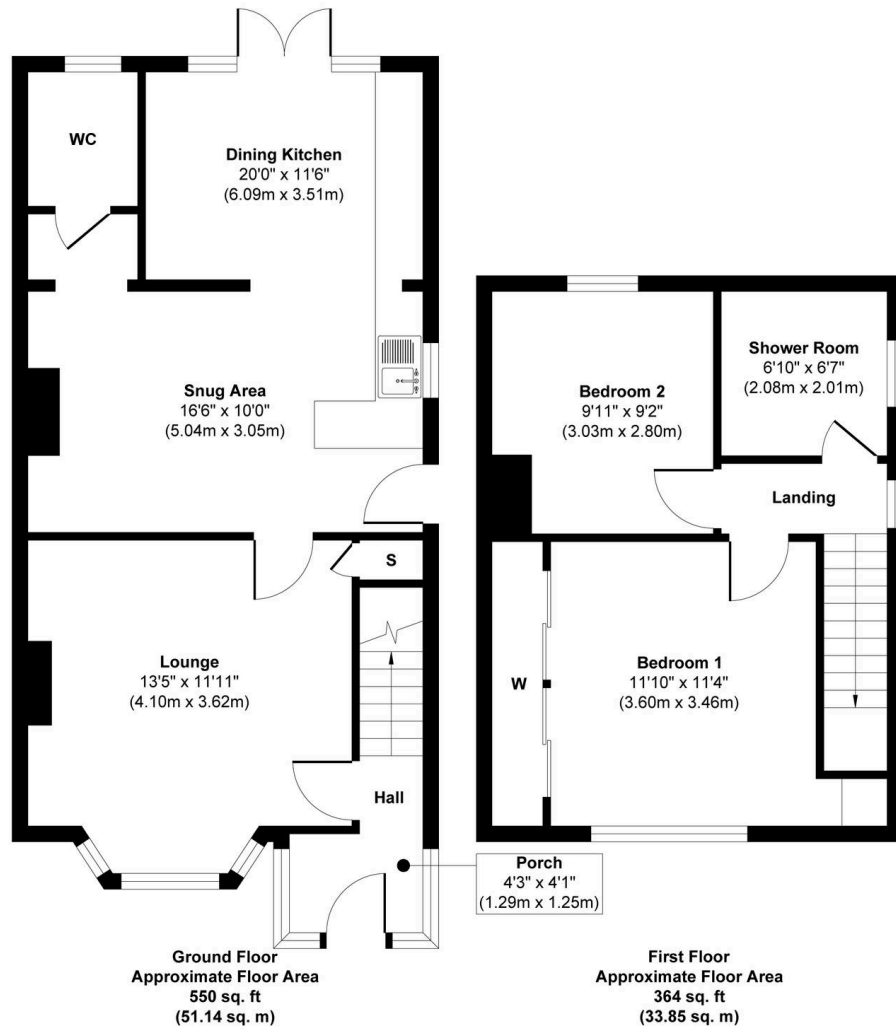
Sought After Location Of Berkswell | Gated Driveway with Double Garage Offering Ample Parking | Master Bedroom Features Built In Wardrobes | Large Southwest Facing Mature Garden | Extended Property - Kitchen | Downstairs W/C | Within Close Proximity to Local Primary School | Approx Floor Area: 84.99 Sqm | EPC C

Council Tax band: D

Tenure: Freehold



## East View benton Green



**Approx. Gross Internal Floor Area 914 sq. ft / 84.99 sq. m**

Illustration for identification purposes only, measurements are approximate, not to scale.

Produced by Elements Property



## Bayzos Estate Agents

Bayzos Head Office, Bridge Street, c/o 2nd Floor - WR11 4SQ

0330 124 6533 • [info@bayzos.co.uk](mailto:info@bayzos.co.uk) • [bayzos.co.uk/](http://bayzos.co.uk/)

**bayzos.**