



22 Sandringham Road, King's Lynn PE30 4DB

£199,995

Bedrooms: 3 | Bathrooms: 1 | Receptions: 1

Tucked away at the end of a peaceful cul-de-sac, just off Wootton Road, and within easy reach of the excellent range of amenities in Gaywood including schools, shops and more, this wonderfully proportioned three-bedroom end-terrace home offers an exciting opportunity for buyers seeking comfort, space and future potential. Offered to the market with no onward chain, the property is ready to be enjoyed from the moment you turn the key, while still presenting a superb blank canvas for those looking to personalise and add their own style over time.

Approached via a footpath at the end of the cul-de-sac, a gate opens into the front garden where a mature hedge provides a welcome sense of privacy, framing a neatly lawned area and setting the tone for the inviting home beyond.

Step inside and a welcoming entrance hall immediately hints at the light, airy feel that flows throughout the property. The comfortable living room offers a relaxing retreat at the end of a busy day, with the gas fire providing a focal point. Picture cosy evenings here, curtains drawn, the fire glowing and your favourite film or book helping you unwind.

At the heart of the home lies the generously sized kitchen/dining room, a versatile space designed for modern living. Whether it's quick midweek suppers, homework at the table after school, or hosting friends and family, this room effortlessly adapts to every occasion. The thoughtfully arranged kitchen offers an abundance of worktop space and storage, ensuring practicality without compromising the sociable feel of the room. Flowing seamlessly from here, the heated conservatory enhances the living space further, creating a wonderful year-round spot to enjoy the garden. Imagine starting the day here with a coffee and a good book, or simply relaxing while looking out over the secluded garden beyond.

Off the kitchen/dining area is a useful lobby with side access to the garden, convenient for outdoor entertainment, along with a handy under-stairs storage cupboard, perfect for keeping those garden furniture cushions neatly tucked away.

Upstairs, the sense of space continues with three well-proportioned bedrooms, all served by the spacious family bathroom. Bedrooms one and two are both generous doubles, with the principal bedroom benefitting from some handy storage as well as ample space for furniture. The third bedroom is a good-sized single, cleverly arranged by the current owners to maximise the available space thanks to the built-in bed, ideal as a child's room, guest room or even a home office.

Outside, the south-facing rear garden is a real highlight, private, sunny and brimming with potential. There is ample room for outdoor seating, a garden shed, and a patio area for al fresco dining. Whether you're enjoying quiet weekend mornings outdoors or hosting summer barbecues with friends, this enclosed space offers the perfect setting. Like the interior, the low maintenance garden is ready to enjoy immediately but also provides a fantastic opportunity to shape and develop into the outdoor haven you've always envisioned.

For those thinking about the future, the property also offers excellent scope to extend to the side, subject to the necessary planning permissions. This flexibility means the home could easily grow alongside your needs, making it a fantastic long-term prospect as well as an ideal first step onto the property ladder.

Combining a quiet cul-de-sac location, bright and spacious accommodation, an updated gas central heating system, a sunny south-facing garden and exciting potential for the future, this welcoming home is ready for its next chapter, and an early viewing is highly recommended to fully appreciate everything it has to offer.

Tenure: Freehold

Property Type: End of Terrace House

- End of Terrace House
- Three Comfortable Bedrooms
- Generous Kitchen/Dining Room
- Wonderful South Facing Enclosed Garden
- No Onward Chain
- Perfect First Home
- Potential to Extend (STPP)
- Modern Conservatory
- Set within a Cul-de-sac
- Popular Location - Convenient Local Schools and other Amenities

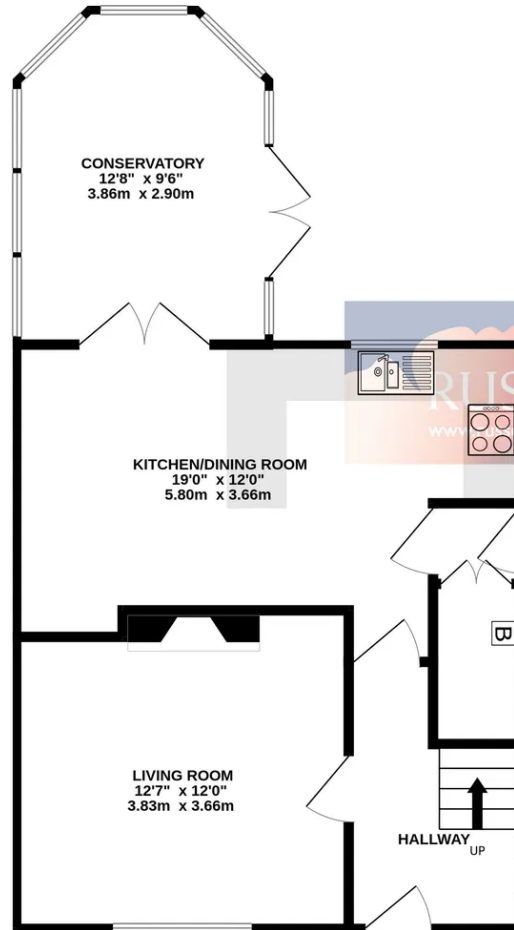
Disclaimer

1. To meet money-laundering regulations, all buyers will need to complete an ID check. We'll ask you to provide the necessary documents, and there's a small fee of £20.50 per client for this service.
2. We do our best to make sure our property details are fair, accurate, and up to date, but they're meant as a general guide only. If there's anything particularly important to you, please get in touch – we'll be happy to look into it further.
3. All measurements are provided as a guide and may not be exact.
4. We haven't tested any of the property's services, equipment, or appliances. We recommend that buyers arrange their own survey or service checks before making a final offer.
5. These details are provided in good faith, but they don't form part of any offer or contract. Buyers should verify any points that are important to them before proceeding.

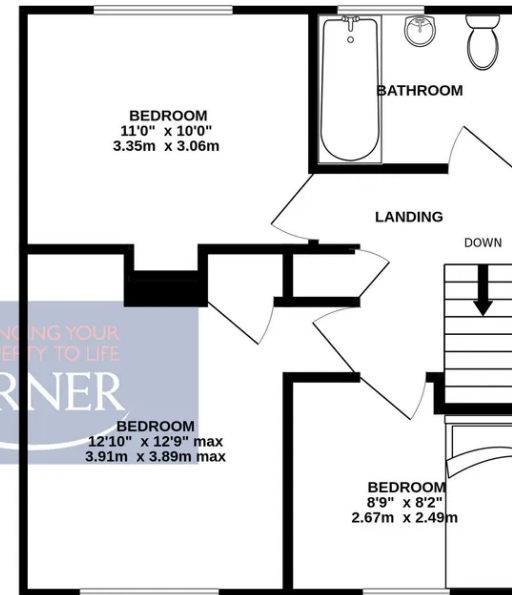


Somewhere to enjoy the garden from all year round

GROUND FLOOR
527 sq.ft. (48.9 sq.m.) approx.



1ST FLOOR
417 sq.ft. (38.7 sq.m.) approx.



TOTAL FLOOR AREA : 944 sq.ft. (87.7 sq.m.) approx.

Whilst every attempt has been made to ensure the accuracy of the floorplan contained here, measurements of doors, windows, rooms and any other items are approximate and no responsibility is taken for any error, omission or mis-statement. This plan is for illustrative purposes only and should be used as such by any prospective purchaser. The services, systems and appliances shown have not been tested and no guarantee as to their operability or efficiency can be given.
Made with Metropix ©2026