



Dolobran Road, Birmingham B11 1HJ

welcome to

Dolobran Road, Birmingham

**** TWO BEDROOMS ** TWO RECEPTION ROOMS ** SHOWER ROOM/WC ** EXCELLENT LOCATION ** LOFT ROOM ** IDEAL FIRST TIME PURCHASE
** SUITABLE BUY TO LET INVESTMENT ** WELL PRESENTED THROUGHOUT ****

Agent Note

This property is council tax band A.

Rear Garden

Patio.

Lounge

12' 6" x 13' 2" into bay. (3.81m x 4.01m into bay.)
Double glazed bay window to front, ceiling light point, radiator.

Dining Room

11' 9" x 11' 4" (3.58m x 3.45m)
Ceiling light point, radiator, stairs cupboard.

Kitchen

12' x 5' 7" (3.66m x 1.70m)
Double glazed window to rear & UPVC door to rear,
ceiling light point, integrated cooker & gas hob, gas
boiler, range of cupboards & worktops.

Landing

Ceiling light point.

Bedroom 1

12' 7" x 11' 8" (3.84m x 3.56m)
Double glazed window to front, radiator, ceiling
light point, cupboard.

Bedroom 2

12' 4" x 8' 10" (3.76m x 2.69m)
2 Double glazed window to rear, radiator, ceiling
light point, storage cupboard.

Bathroom

Double glazed obscure window to rear, loft hatch,
extractor fan, ceiling light point, shower cubicle, low
level flush w/c, wash hand basin.

Loft Space

21' 2" x 12' 6" (6.45m x 3.81m)
Velux window, stairs.





view this property online shipways.co.uk/Property/SLY112134



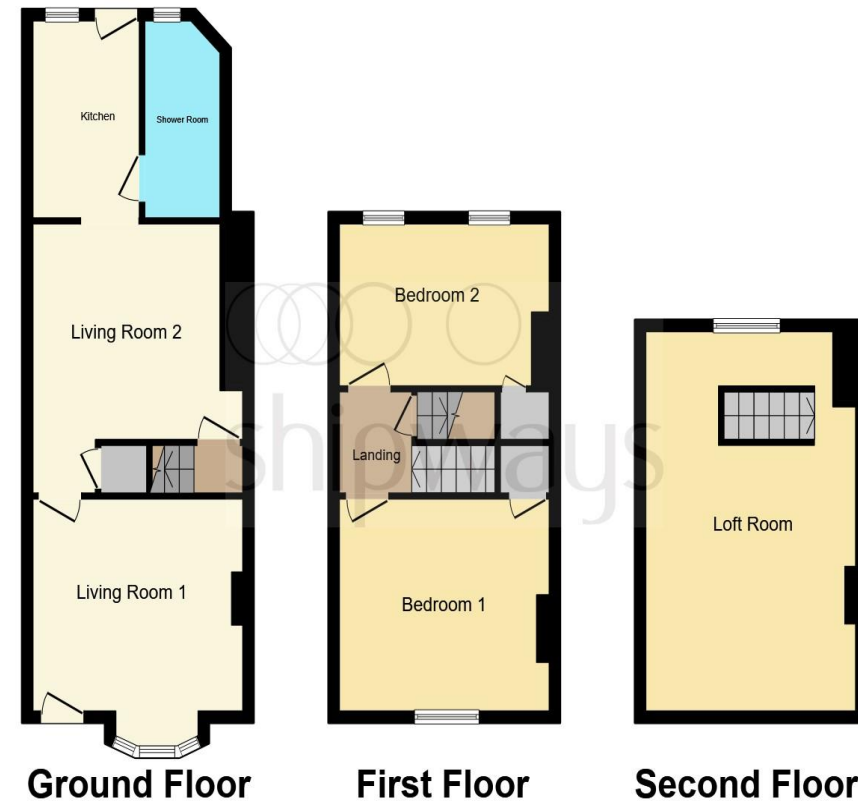
welcome to

Dolobran Road, Birmingham

- TWO BEDROOMS
- MID-TERRACED
- TWO RECEPTION ROOMS
- LOFT ROOM
- EXCELLENT LOCATION

Tenure: Freehold EPC Rating: D
Council Tax Band: A

offers over
£200,000



This floor plan is for illustrative purposes only. It is not drawn to scale. Any measurements, floor areas (including any total floor area), openings and orientation are approximate. No details are guaranteed, they cannot be relied upon for any purpose and they do not form part of any agreement. No liability is taken for any error, omission or misstatement. A party must rely upon its own inspection(s). Powered by www.focalagent.com

view this property online shipways.co.uk/Property/SLY112134



Property Ref:
SLY112134 - 0002

1. MONEY LAUNDERING REGULATIONS Intending purchasers will be asked to produce identification documentation at a later stage and we would ask for your co-operation in order that there is no delay in agreeing the sale. 2. These particulars do not constitute part or all of an offer or contract. 3. The measurements indicated are supplied for guidance only and as such must be considered incorrect. Potential buyers are advised to recheck measurements before committing to any expense. 4. We have not tested any apparatus, equipment, fixtures or services and it is in the buyers interest to check the working condition of any appliances. 5. Where an EPC, or a Home Report (Scotland only) is held for this property, it is available for inspection at the branch by appointment. If you require a printed version of a Home Report, you will need to pay a reasonable production charge reflecting printing and other costs. 6. We are not able to offer an opinion either written or verbal on the content of these reports and this must be obtained from your legal representative. 7. Whilst we take care in preparing these reports, a buyer should ensure that his/her legal representative confirms as soon as possible all matters relating to title including the extent and boundaries of the property and other important matters before exchange of contracts.



0121 744 4595



shirley@shipways.co.uk



208 Stratford Road, Shirley, SOLIHULL, West Midlands, B90 3AG



shipways.co.uk