



GREENFIELD
EST. 1985

GREENFIELD

Meadowview Road, Ewell, Epsom KT19 9TS

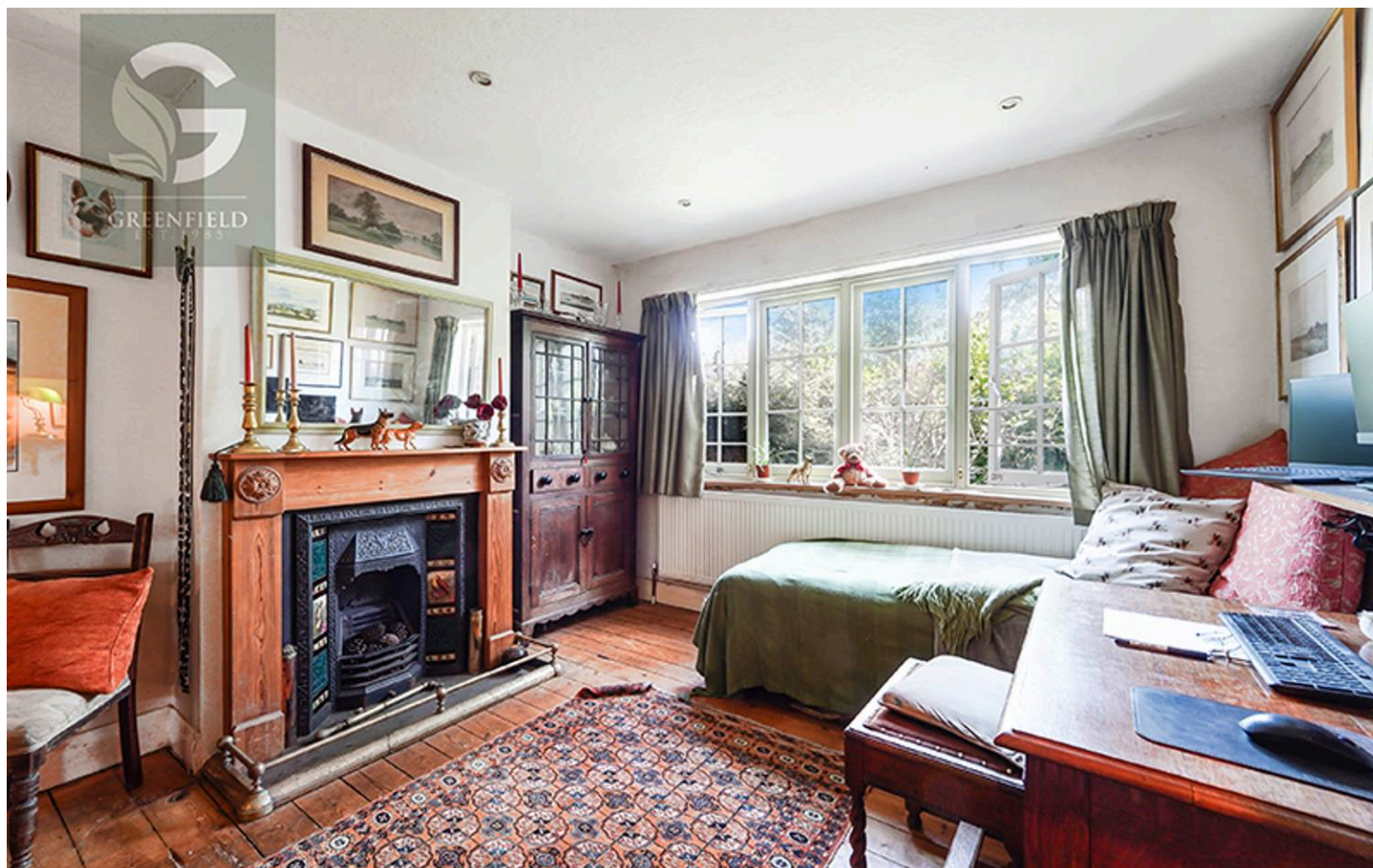
West Ewell

17 Meadowview Road

Epsom

- Characterful 1930s built "country cottage" inspired 3 bed end terrace
- Potential to extend upstairs (STPP)
- Two bedrooms to first floor with third bedroom/study on ground floor
- Detached annexe with shower room to end of garden with gated parking space
- Off road parking space at front
- Two reception rooms & farmhouse style kitchen
- Downstairs bathroom with feature fittings including high flush wc and claw foot bath
- Close to West Ewell train station for access to London (zone 6) & local shops

FARMHOUSE COTTAGE STYLE HOME - If you are bored of viewing houses that all seem to look the same, then this could be the one for you !! A most charming 1930s built end of terrace house, bringing the feel of the country to West Ewell. It has been lovingly transformed by the current owner, inspired by the classic country cottage style with authentic character and restored architectural features throughout. Step inside to find two inviting reception rooms, one extending into a dining area, perfect for relaxing or entertaining, and a farmhouse style kitchen that brings a touch of rustic warmth to your daily routine. Upstairs, there are two comfortable double bedrooms, while a third bedroom on the ground floor offers excellent flexibility as a guest room, library, study or home office.



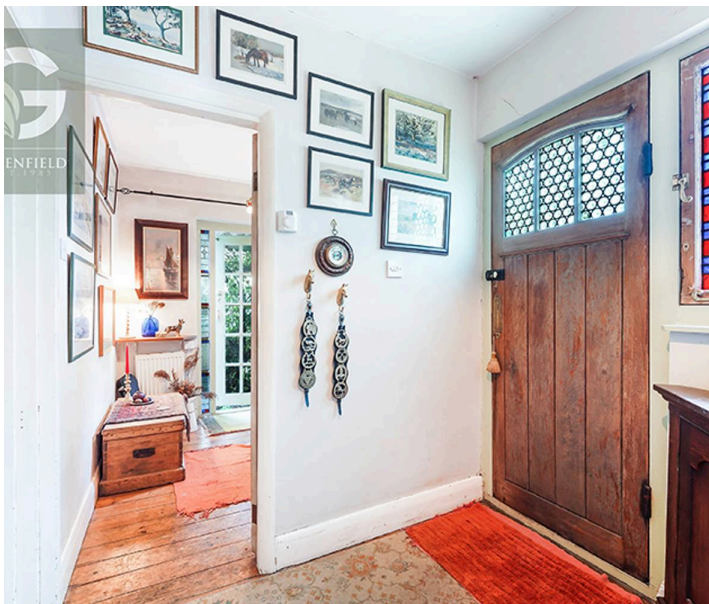


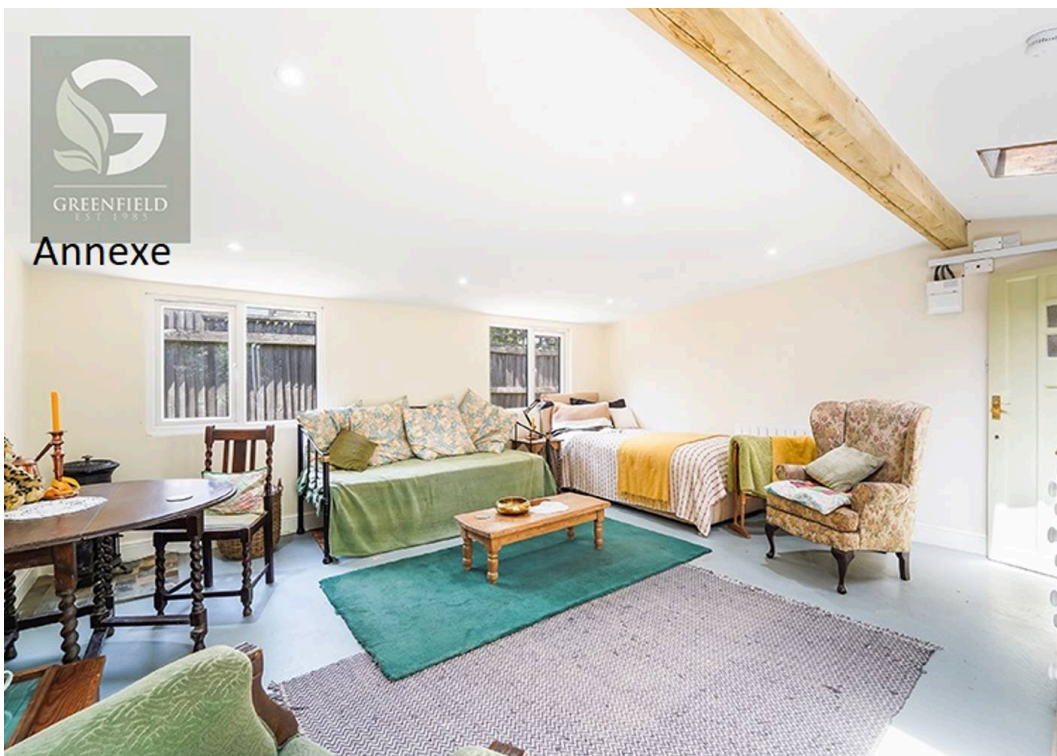
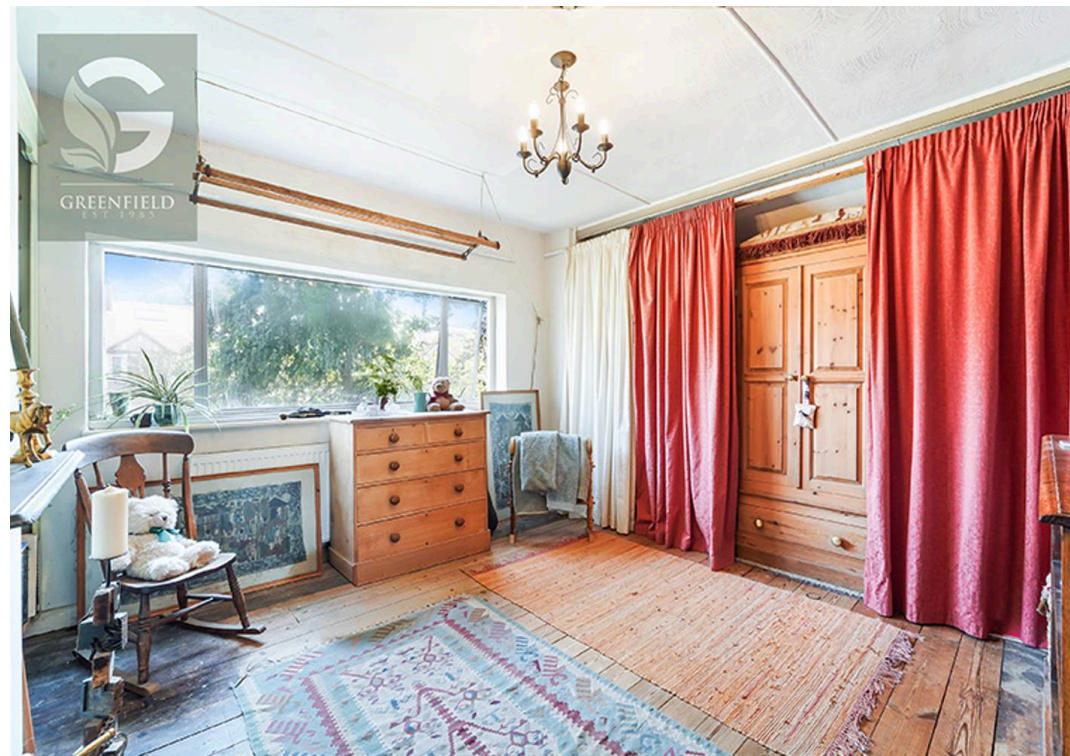
17 Meadowview Road

Epsom

3 BED FARMHOUSE STYLED END OF TERRACE WITH FULL DETACHED ANNEXE - CLOSE TO WEST EWELL STATION - Charming 1930s built end terrace with lovingly crafted cottage style interior, 2 receptions, farmhouse kitchen, 3 beds, detached annexe with shower room, 2 parking spaces, near West Ewell station and shops. Character and convenience!

Meadowview Road is a well-established residential street in the popular KT19 area, known for its family-friendly atmosphere and convenient access to local amenities. The property is within easy reach of a range of shops, supermarkets and everyday services, as well as well-regarded schools and recreational facilities. Excellent transport links are available via nearby rail stations and road networks, providing straightforward access to Epsom, Ewell and Central London. The area also benefits from a number of nearby parks and green spaces, making it an attractive location for families and commuters alike.







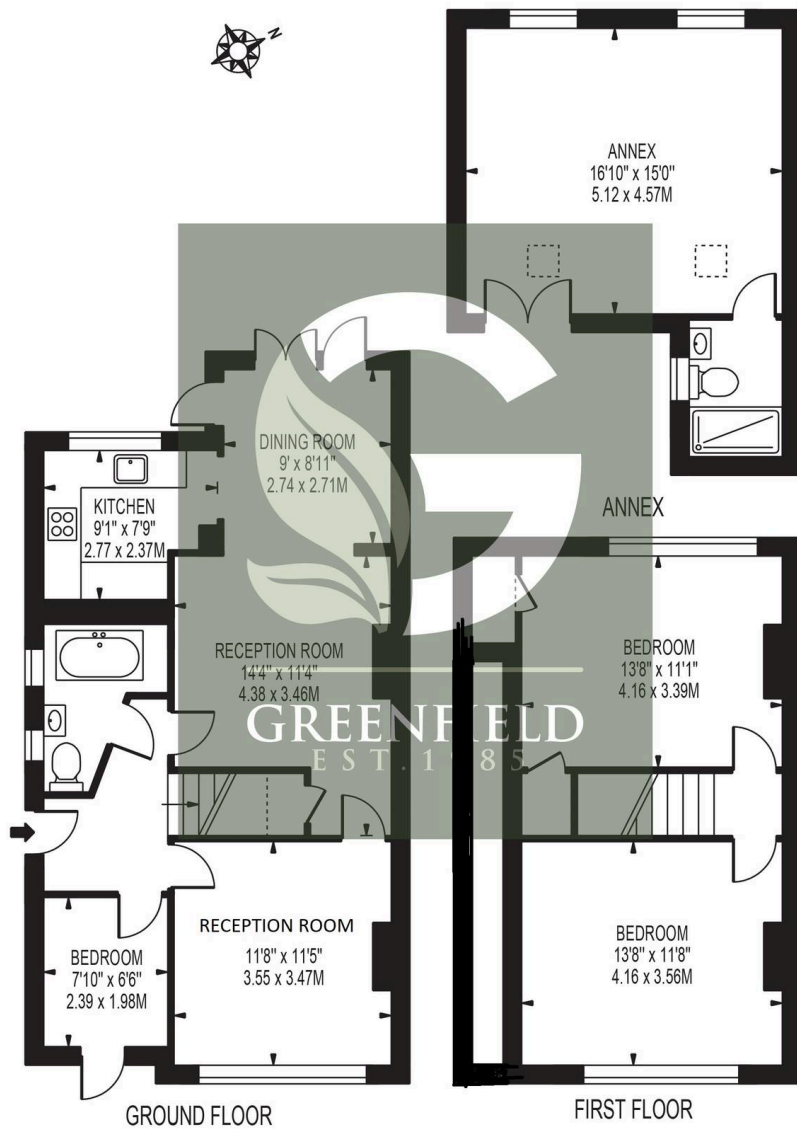
MEADOWVIEW ROAD

APPROXIMATE GROSS INTERNAL FLOOR AREA: 1011 SQ FT - 93.88 SQ M

(INCLUDING RESTRICTED HEIGHT AREA & EXCLUDING ANNEX)

APPROXIMATE GROSS INTERNAL FLOOR AREA OF RESTRICTED HEIGHT: 11 SQ FT - 0.98 SQ M

APPROXIMATE GROSS INTERNAL FLOOR AREA OF ANNEX: 290 SQ FT - 26.91 SQ M



FOR ILLUSTRATION PURPOSES ONLY

THIS FLOOR PLAN SHOULD BE USED AS A GENERAL OUTLINE FOR GUIDANCE ONLY AND DOES NOT CONSTITUTE IN WHOLE OR IN PART AN OFFER OR CONTRACT. ANY INTENDING PURCHASER OR LESSEE SHOULD SATISFY THEMSELVES BY INSPECTION, SEARCHES, ENQUIRIES AND FULL SURVEY AS TO THE CORRECTNESS OF EACH STATEMENT. ANY AREAS, MEASUREMENTS OR DISTANCES QUOTED ARE APPROXIMATE AND SHOULD NOT BE USED TO VALUE A PROPERTY OR BE THE BASIS OF ANY SALE OR LET.



Greenfield Estate Agents – Ewell Village

Greenfield Estate Agents 55 High Street, Epsom – KT17 1RX

02083930077 • property@greenfieldewell.co.uk • www.greenfieldewell.co.uk/

