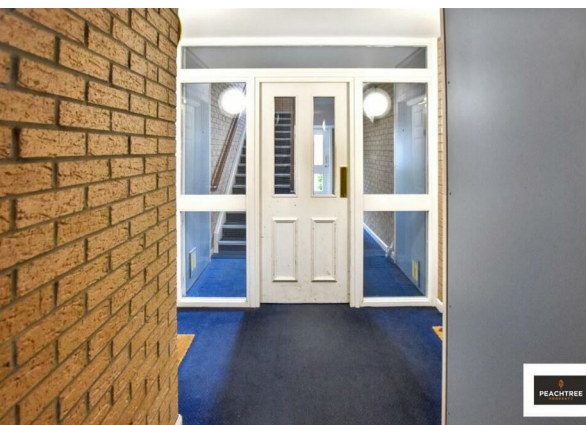


1/1 1 Torridon Drive, Renfrew, PA4 0US  
Offers Over £129,995  
EPC Rating: C Council Tax Band: D



Peachtree Property are delighted to welcome to the market in excellent order this modern first floor flat located in the desirable Stewart Milne development at Torridon Drive, Renfrew.

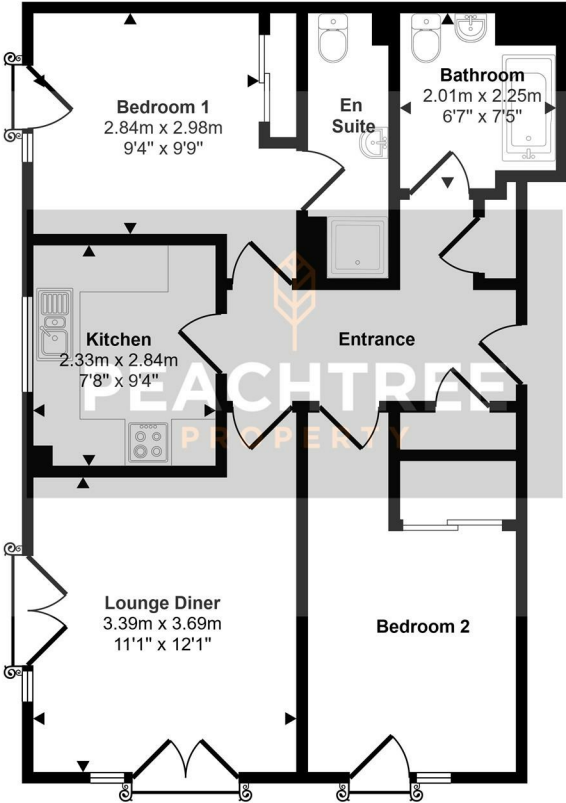


28 Hairst Street Hairst St  
Renfrew  
PA4 8QY

0141 577 1111

info@peachtreeproperty.co.uk

Approx Gross Internal Area  
62 sq m / 662 sq ft



Floorplan

This floorplan is only for illustrative purposes and is not to scale. Measurements of rooms, doors, windows, and any items are approximate and no responsibility is taken for any error, omission or mis-statement. Icons of items such as bathroom suites are representations only and may not look like the real items. Made with Made Snappy 360.

Energy Efficiency Rating		Current	Potential
Very energy efficient - lower running costs			
(92 plus) <b>A</b>			
(81-91) <b>B</b>			
(69-80) <b>C</b>		80	80
(55-68) <b>D</b>			
(39-54) <b>E</b>			
(21-38) <b>F</b>			
(1-20) <b>G</b>			
Not energy efficient - higher running costs			
<b>Scotland</b>		EU Directive 2002/91/EC	