



 peter
alan

 4  1  1

Caegwyn Road, Cardiff

£575,000

 peter
alan

02920 612328
whitchurch@peteralan.co.uk



 peter
alan

 peter
alan

About the property

A deceptively spacious detached double fronted three-four bedroom bungalow and occupying a delightful position fronting highly sought after Caegwyn Road, a private residential road located within walking distance to Whitchurch Village. This unique home is set back behind a private screen of mature hedgerow, affording privacy and security, with the benefits of a private entrance drive leading to double gates which access a detached garage. The bungalow has been fully renovated to a high standard throughout and available with no onward chain.

The bungalow has many recent improvements including PVC double glazed replacement windows, modern gas heating, a newly fitted high specification kitchen and new slate roof (replaced in 2020.) Offering a blend of character and seamless features throughout. The hallway features a well-maintained layout with a light and welcoming atmosphere leading through to the heart of the home. A stunning dining room/living space enhancing the sense of space and light.

Located close to local amenities, parks and excellent transport links into Cardiff City Centre, a fantastic opportunity to acquire this unique home.

Accommodation

Agents Note:

Agents Note: The Land Registry title has yet to be updated with the Vendor's details. Please ask the branch for more details.

Bedroom 1

12' 8" x 10' 4" (3.86m x 3.15m)
Front facing with fitted storage.

Bedroom 2

12' 8" x 10' 1" (3.86m x 3.07m)
Fitted storage and view of rear garden.

Bedroom 3

11' 7" x 9' (3.53m x 2.74m)
Currently presented as a home office with fitted storage.

Bedroom 4

14' 4" x 7' 1" (4.37m x 2.16m)
Double bedroom facing the landscaped garden.

Reception Room

27' 4" x 11' 1" (8.33m x 3.38m)
French doors leading to the garden with dining space and lounge area.

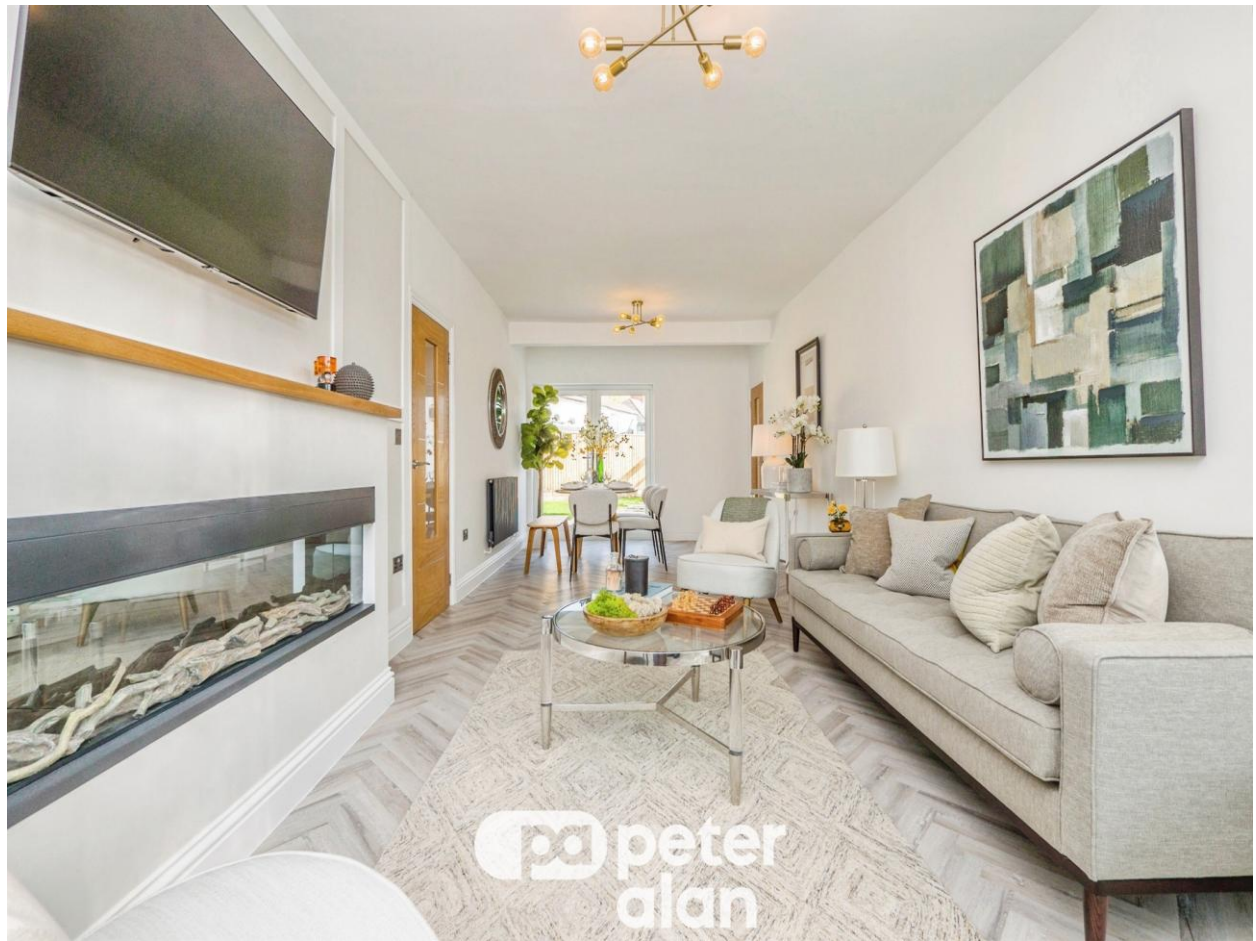
Kitchen

14' 9" x 9' 2" (4.50m x 2.79m)
Newly fitted high standard kitchen with integrated appliances and direct access to the rear garden.









02920 612328

whitchurch@peteralan.co.uk



Total floor area 107.2 m² (1,154 sq.ft.) approx

This floor plan is for illustrative purposes only. It is not drawn to scale. Any measurements, floor areas (including any total floor area), openings and orientation are approximate. No details are guaranteed, they cannot be relied upon for any purpose and they do not form part of any agreement. No liability is taken for any error, omission or misstatement. A party must rely upon its own inspection(s). Powered by www.propertybox.io



Important Information

Note while we endeavour to make our sales details accurate and reliable, if there is any point which is of particular interest to you, please contact the office and we will be pleased to confirm the position for you. We have not personally tested any apparatus, equipment, fixtures, fittings or services and cannot verify they are in working order or fit for their purposes. Nothing in these particulars is intended to indicate that carpets or curtains, furnishings or fittings, electrical goods (whether wired or not), Gas fires or light fittings or any other fixtures not expressly included form part of the property offered for sale. This computer generated Floorplan, if applicable, is intended as a general guide to the layout and design of the property. It is not to scale and should not be relied upon for dimensions. Tenure: We cannot confirm the tenure of the property as we have not had access to the legal documents. The buyer is advised to obtain verification from their solicitor or surveyor.

Peter Alan Limited is registered in England and Wales under company number 2073153, Registered Office is Cumbria House, 16-20 Hockliffe Street, Leighton Buzzard, Bedfordshire, LU7 1GN. VAT Registration Number is 500 2481 05. For activities relating to regulated mortgages and non-investment insurance contracts, Peter Alan Limited is an appointed representative of Connells Limited which is authorised and regulated by the Financial Conduct Authority. Connells Limited's Financial Services Register number is 302221. Most buy-to-let mortgages are not regulated.

